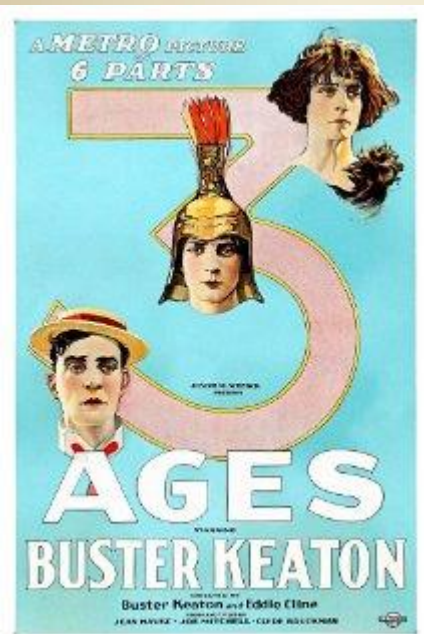
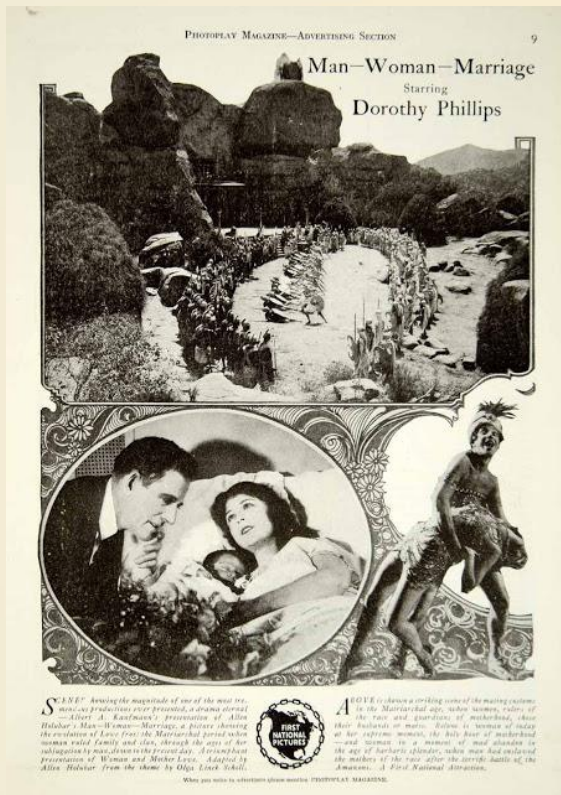


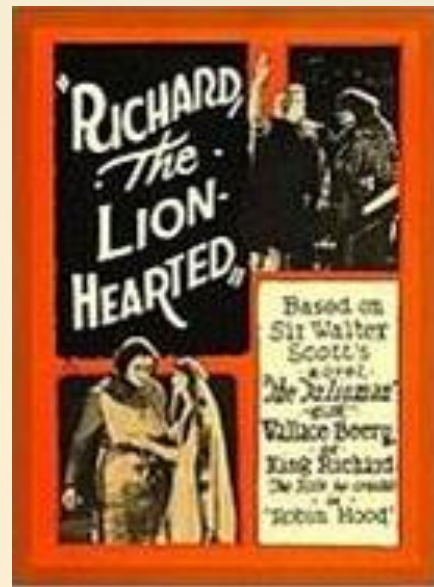
Silent Movie Sets at the Iverson Ranch



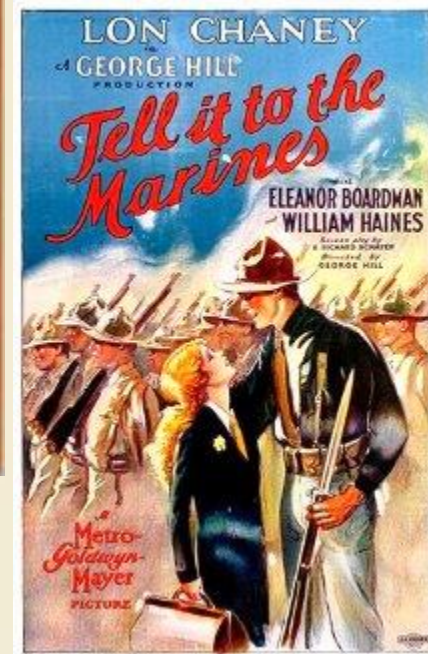
1923



1921



1923



1926

Topics Covered

This presentation was prepared by Dennis Liff, Chatsworth Movie Historian.

This presentation shows examples of spectacular sets that were created at the Garden of the Gods, at Iverson Movie Ranch, during the silent movie era. It analyzes movie stills and publicity photos used from these early times, and discusses how the magnificent and unique silent movie sets were created.

It covers 4 silent movies, and includes silent movie scenes filmed in Chatsworth for the following three movies:

1923 Three Ages – Buster Keaton

1921 Man-Woman-Marriage

1926 Tell it to the Marines

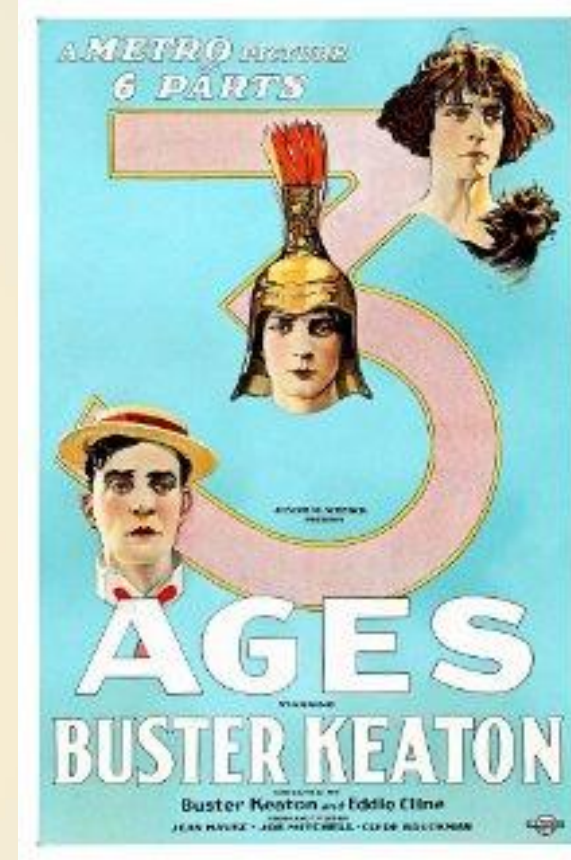
Three Ages

is a 1923 silent film starring comedian Buster Keaton and Wallace Beery.

Three plots are intercut in three different historical periods—prehistoric times, ancient Rome, and modern times (the Roaring Twenties)

The film's badly decayed negative was rediscovered in 1954 and has since been restored.

The film is available for download at https://archive.org/details/Silent_ThreeAges_1923



We will now show two short film
clips from the 1923 movie
Three Ages

The first clip is the
credits/beginning, 6 minutes long

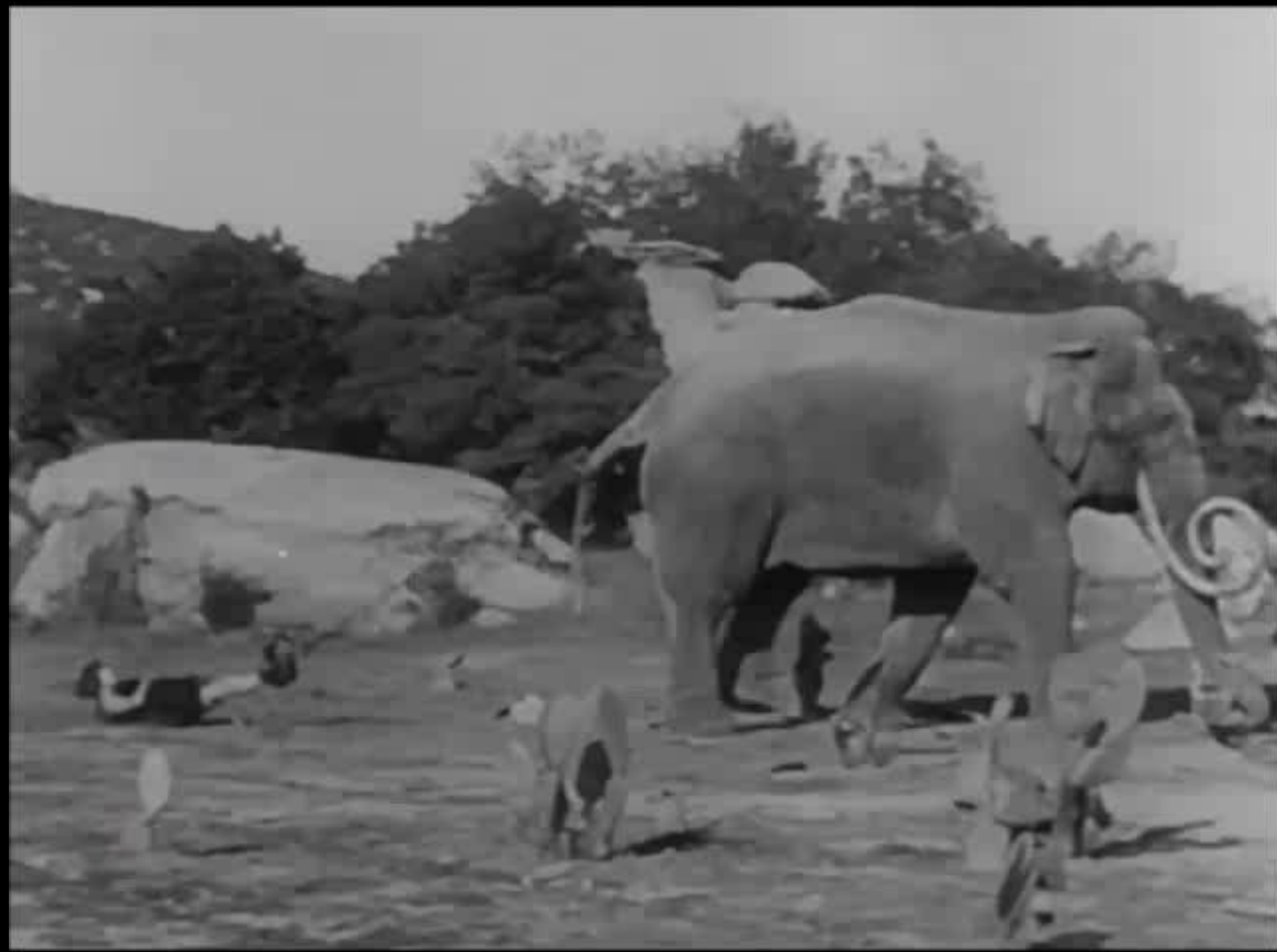
Available on YouTube at
<https://www.youtube.com/watch?v=rxsL42onTxw>

Or search for “Three Ages 1923 Buster Keaton intro”

The second
Three Ages
movie clip shows the well known “Bathtub
Scene”
and the fight at the “Fake Cave House”
This clip is 3 minutes

Available on YouTube at
<https://www.youtube.com/watch?v=A0UkqngMZb0>

Or search for “Three Ages 1923 Buster Keaton bathtub rock house”



The Fake Cave House in 1923 “Three Ages”

The Fake Cave House
is a common thread. It
was built perhaps pre-
1920, and can be seen
in the other movies in
this presentation.



Man-Woman-Marriage

was filmed in 1920 and released in 1921. It had been lost, and had not been seen since it was originally released.

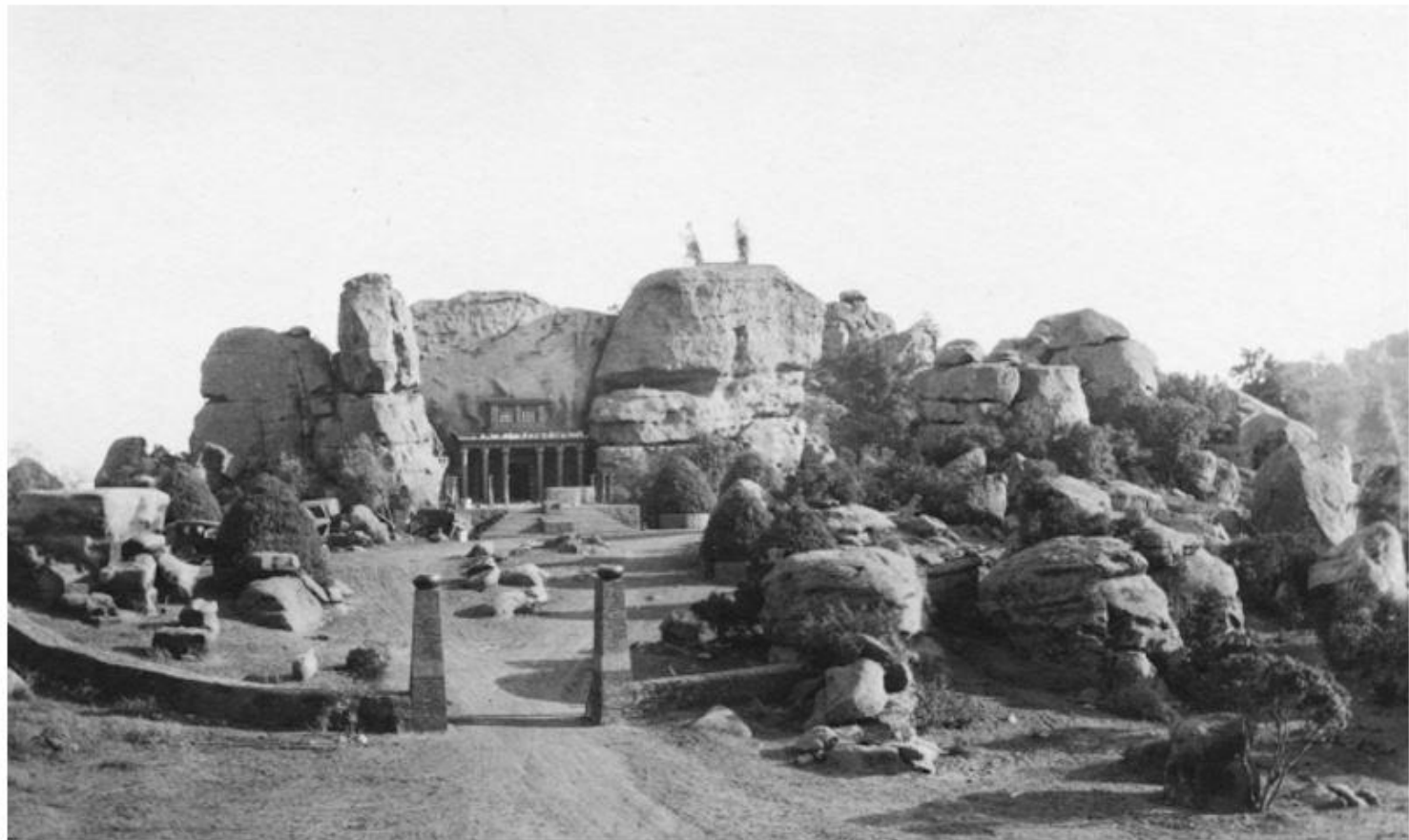
One copy survived at the EYE film institute in Amsterdam, and was recently shared on YouTube.

75% of the silent feature films produced in the U.S. have been lost.



"Give Them the Sword, You Women!"

A gigantic scene of the Amazons of the Matriarchal age preparing for battle to protect their children. One of the big, expensive sets in the making of this picture in which more than 1000 persons appeared, and so stupendous that it amazed even the film colony of Los Angeles.



The set of the big battle scene in "Man-Woman-Marriage" (photo taken in 1920)

The Women Spring to Arms

Women rushing out of their walled city to battle with the men who seek to snatch their children from them. Nine hundred women appeared on horseback in this scene to fight with nearly twice that number of men. The sword clashing battle that follows is one of the most thrilling and massive scenes ever shown on the screen.

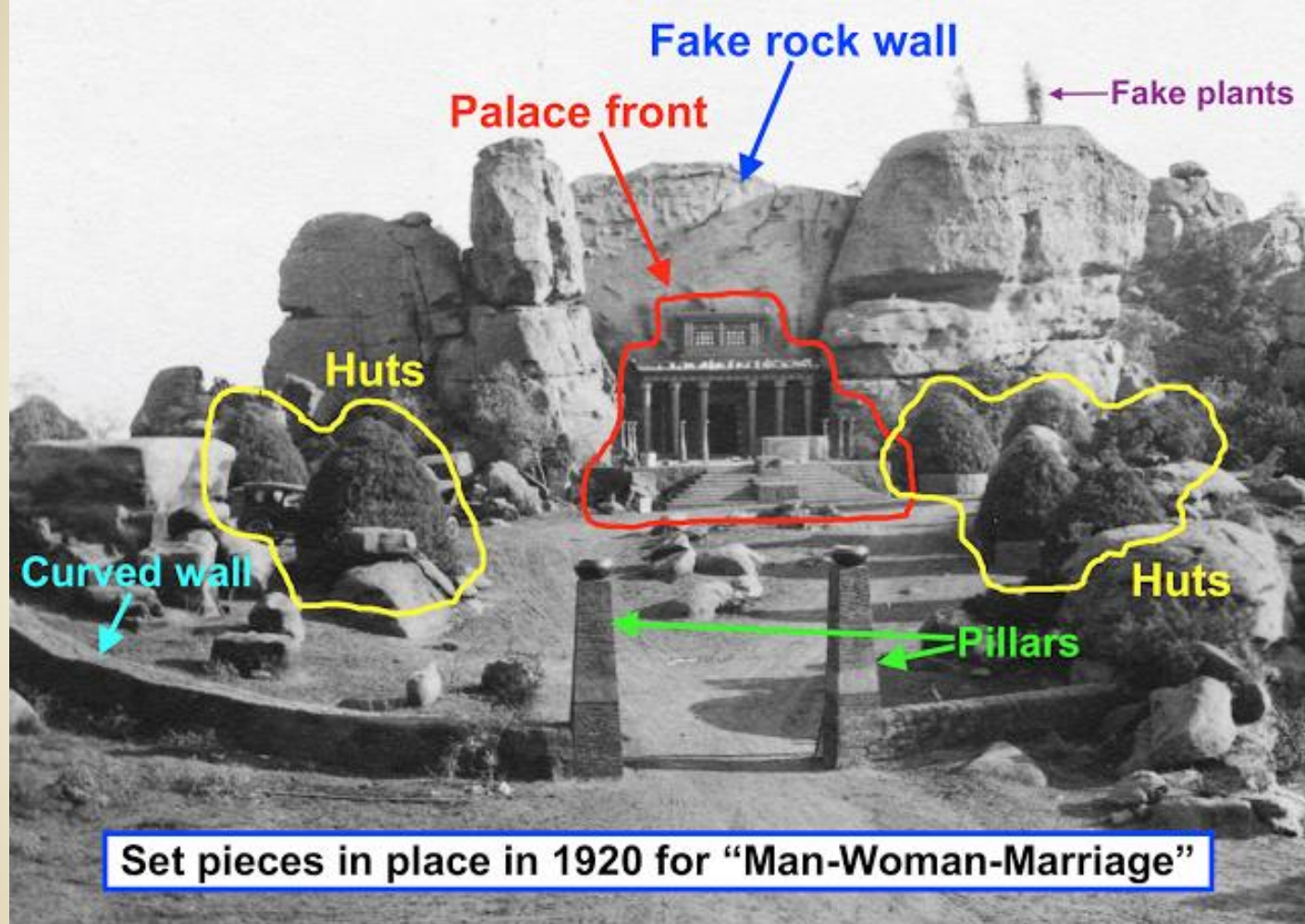
Lobby card for
“Man-Woman-Marriage”
(Jerry England
Collection)



**MAN-
WOMAN-
MARRIAGE**

Allen A. Kohn
Presents
**ALLEN HOLIBAR'S
MAN-WOMAN-MARRIAGE**
THE DRAMA ETHERAL
Starring
DOROTHY PHILLIPS
Adapted by Allen Holibar
from the novel by Clive Lovell Scott

A First National  Attraction





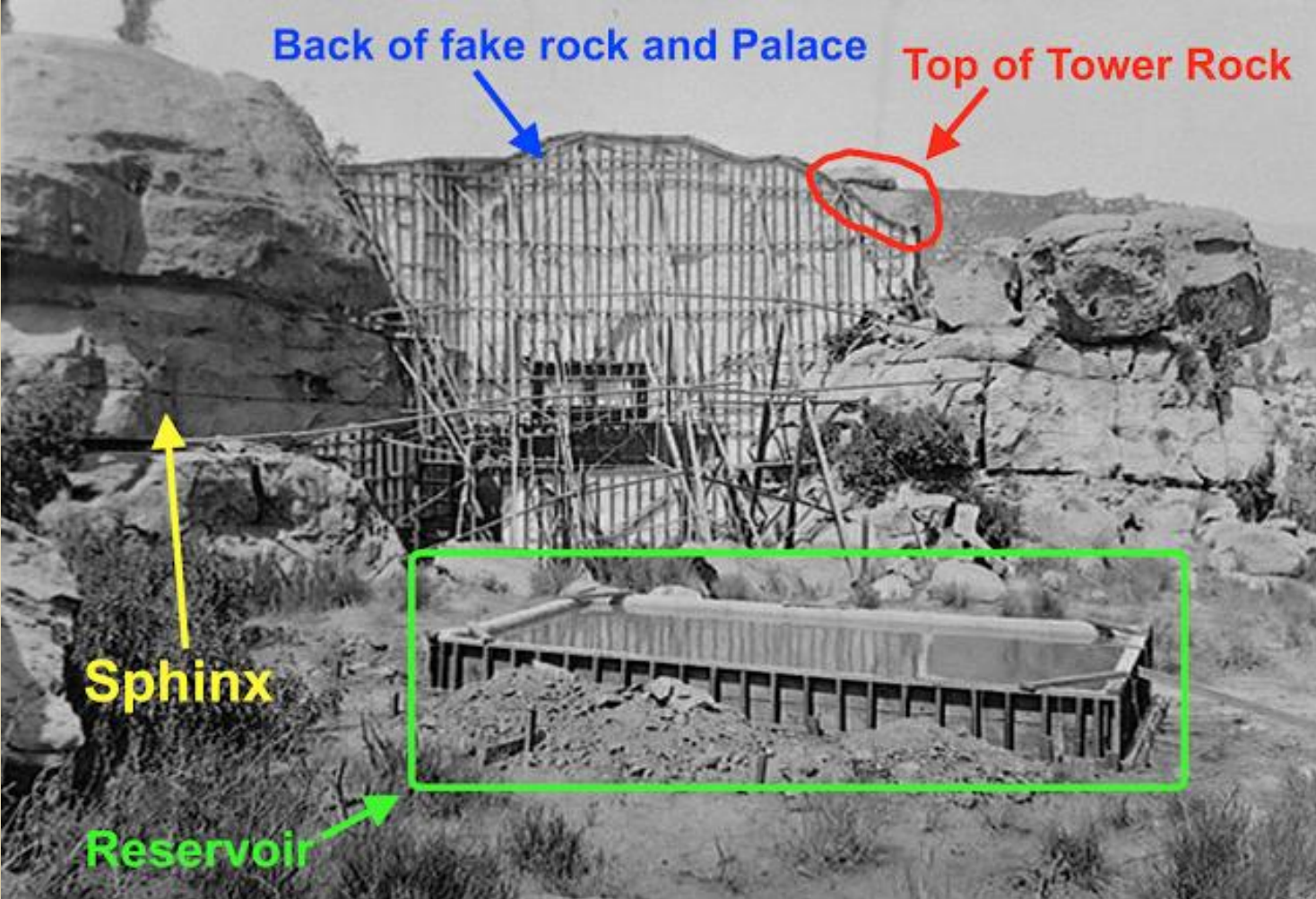


Two cowboy
"spectators"



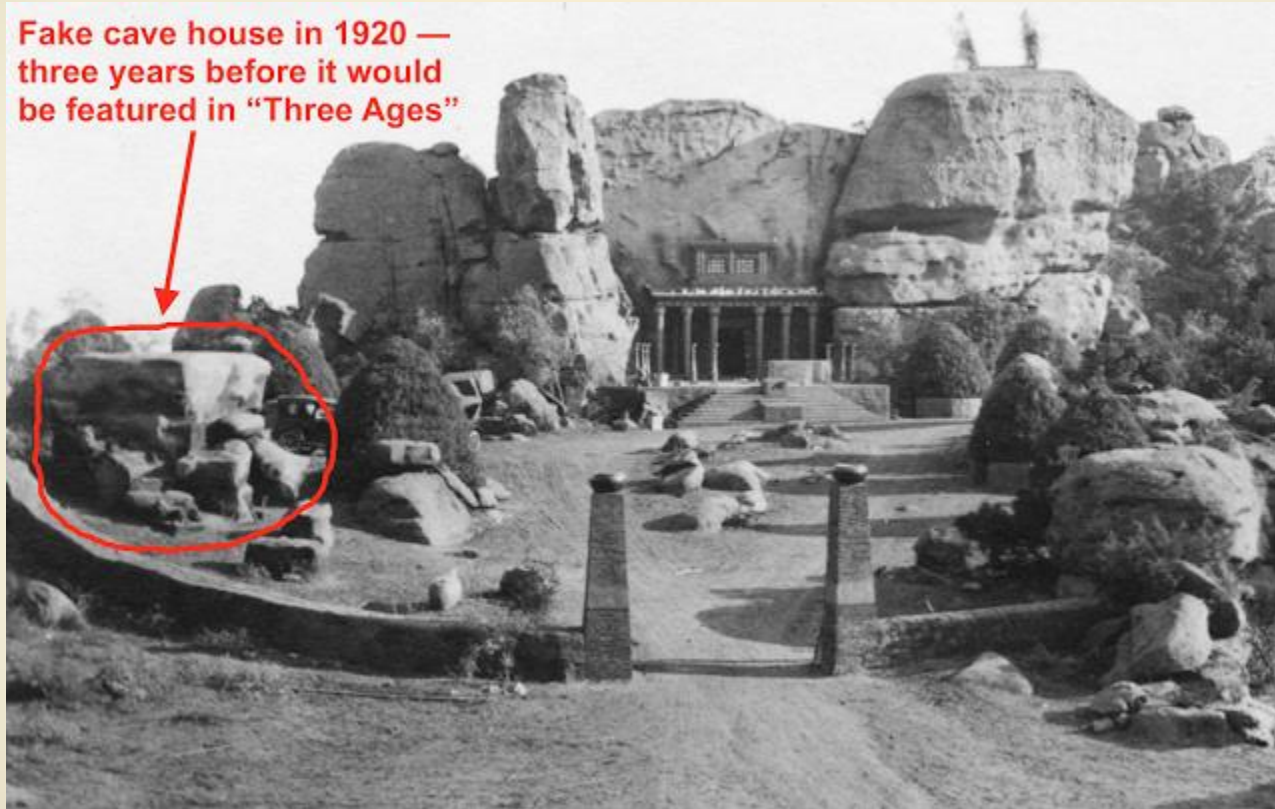


Behind the
scenes
photo from
Man-
Woman-
Marriage



Behind the scenes photo from Man-Woman-Marriage

The Fake Cave House in “Man-Woman Marriage”



Next, 10 minutes of Chatsworth Scenes from “Man-Woman-Marriage” 1921

Source: The EYE Film Institute, Netherlands.
Title cards have been translated from Dutch to English

The entire film is 1hr, 28 minutes long. Scenes filmed in Chatsworth are 10 minutes long.
Filming locations were the Garden of the Gods at Iverson Ranch, and the Chatsworth Reservoir.

Chatsworth Scenes are available on YouTube at
<https://youtu.be/Xoc4F09It00>

Or search for “Man-Woman-Marriage, 1921 Silent film, Chatsworth Scenes”

Man-Woman-Marriage 1921

Chatsworth Scenes only

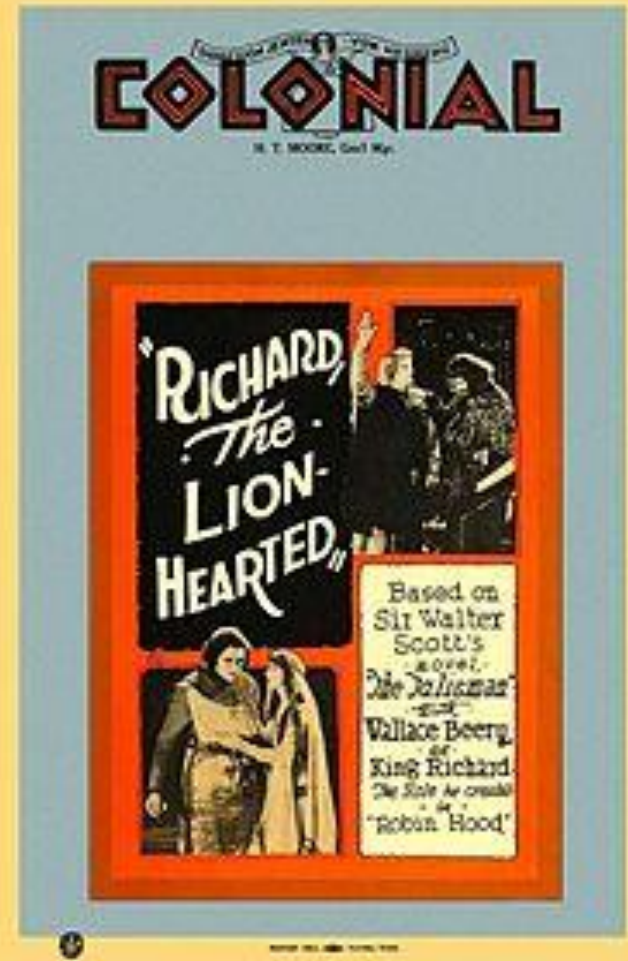
Title Cards have been translated from
Dutch to English

Source: The EYE Film Institute,
Netherlands

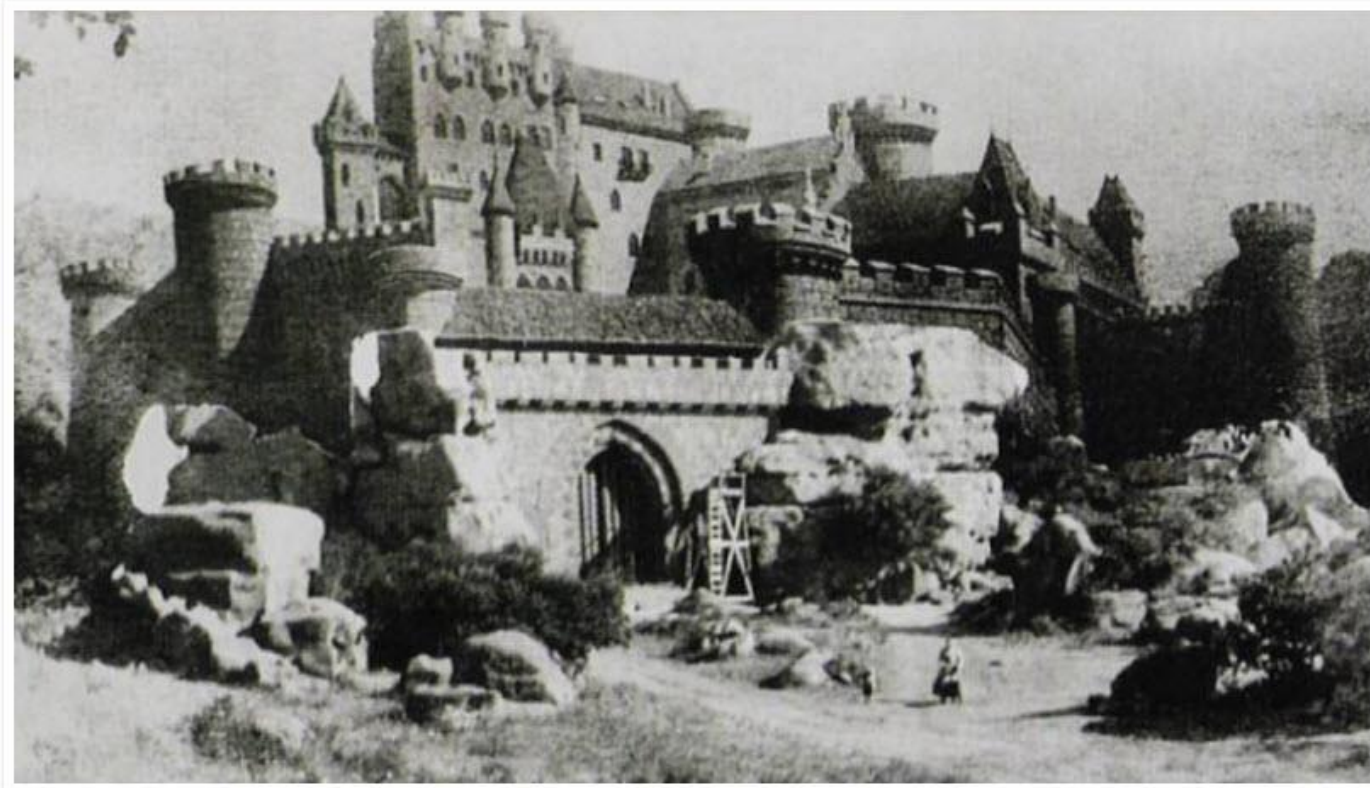
Richard the Lion-Hearted

is a 1923 sequel to Robin Hood (1922; starring Douglas Fairbanks), with Wallace Beery returning as Richard the Lion-Hearted.

With its survival status classified as unknown, it is considered to be a lost film.

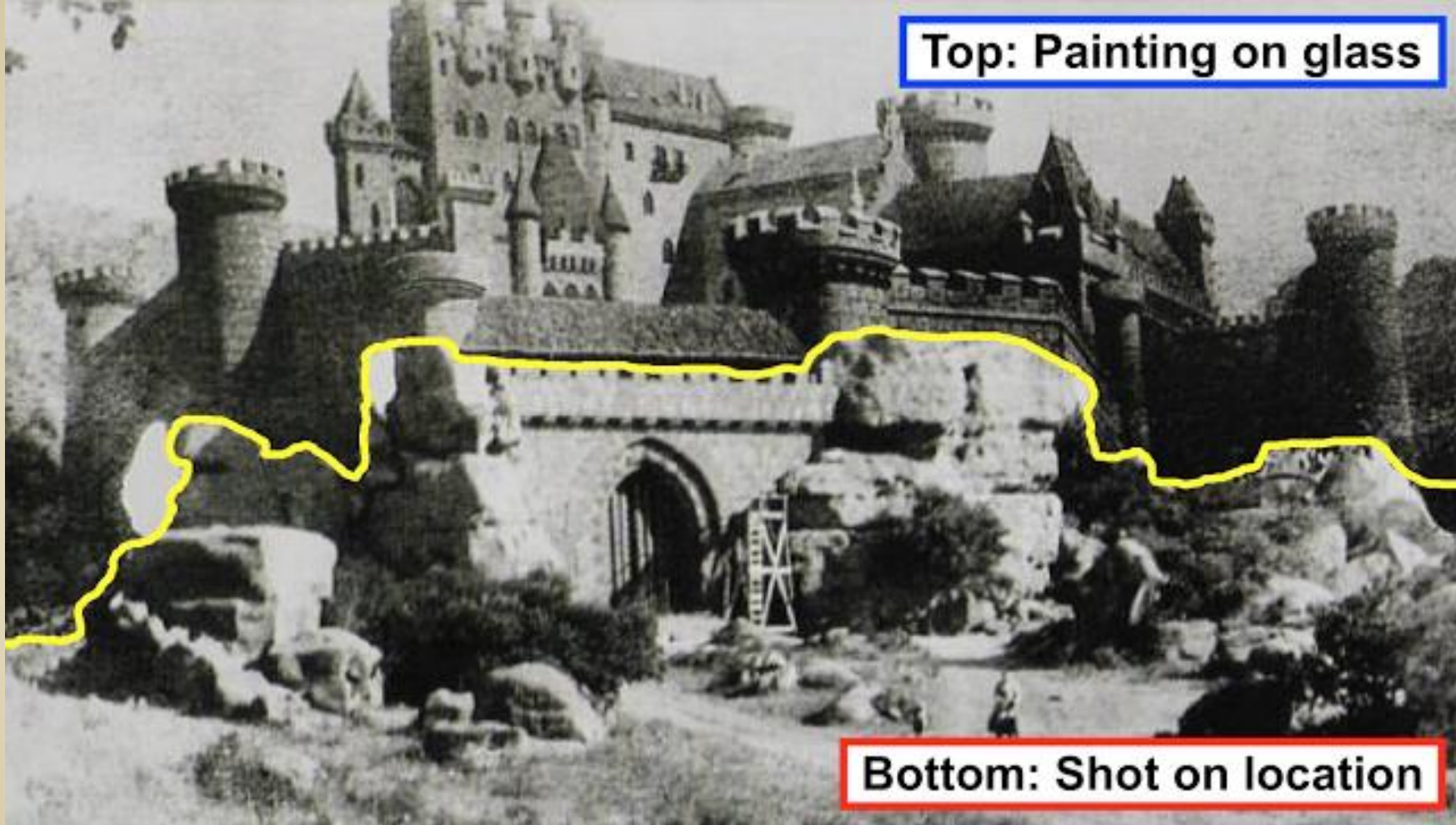


"Richard the Lion-Hearted": A silent movie-era Medieval castle in Garden of the Gods



"Richard the Lion-Hearted" (1923)

Top: Painting on glass

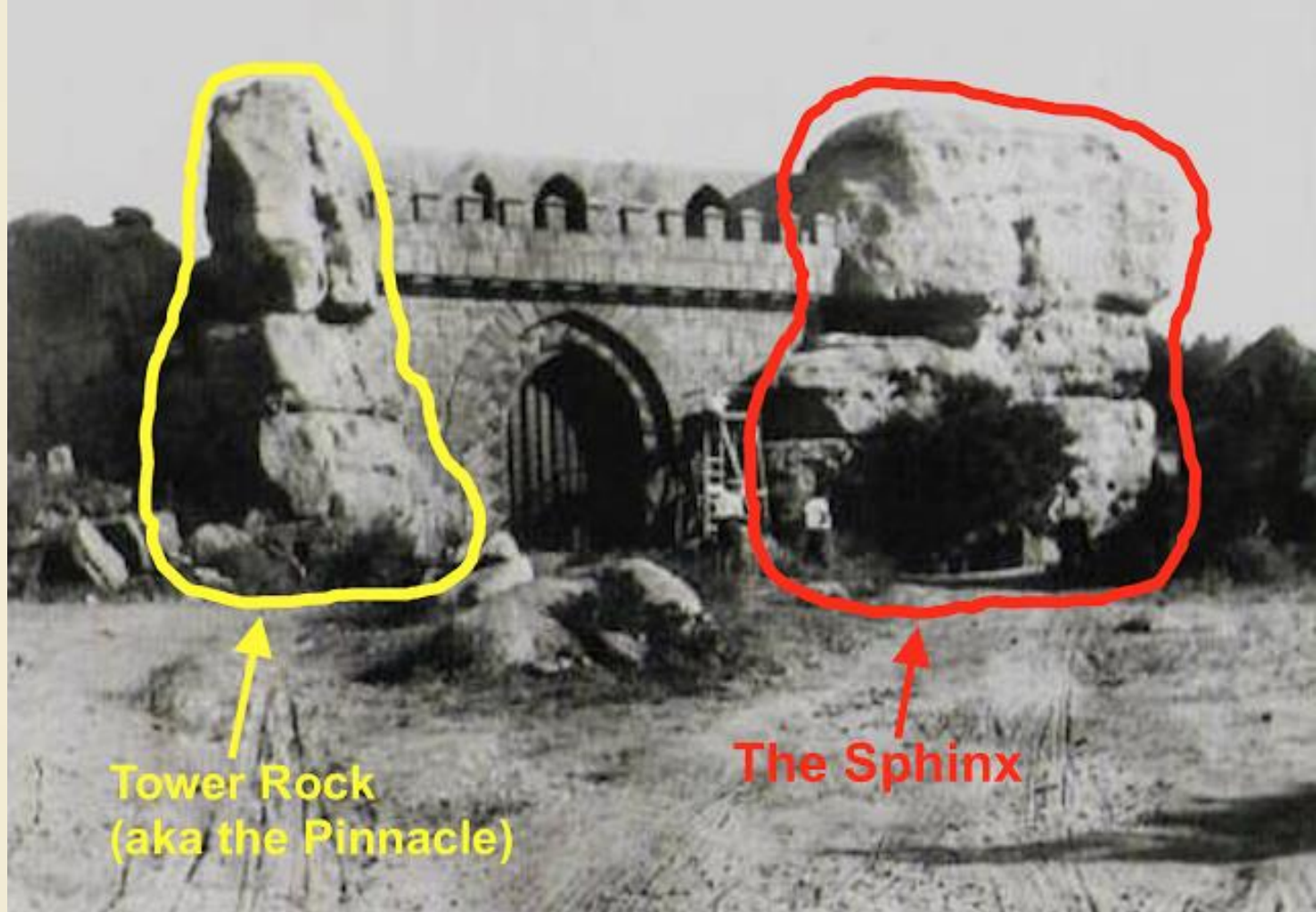


Bottom: Shot on location

Fake castle
front, built for
"Richard the
Lion-Hearted"



Fake castle
front, built for
"Richard the
Lion-Hearted"



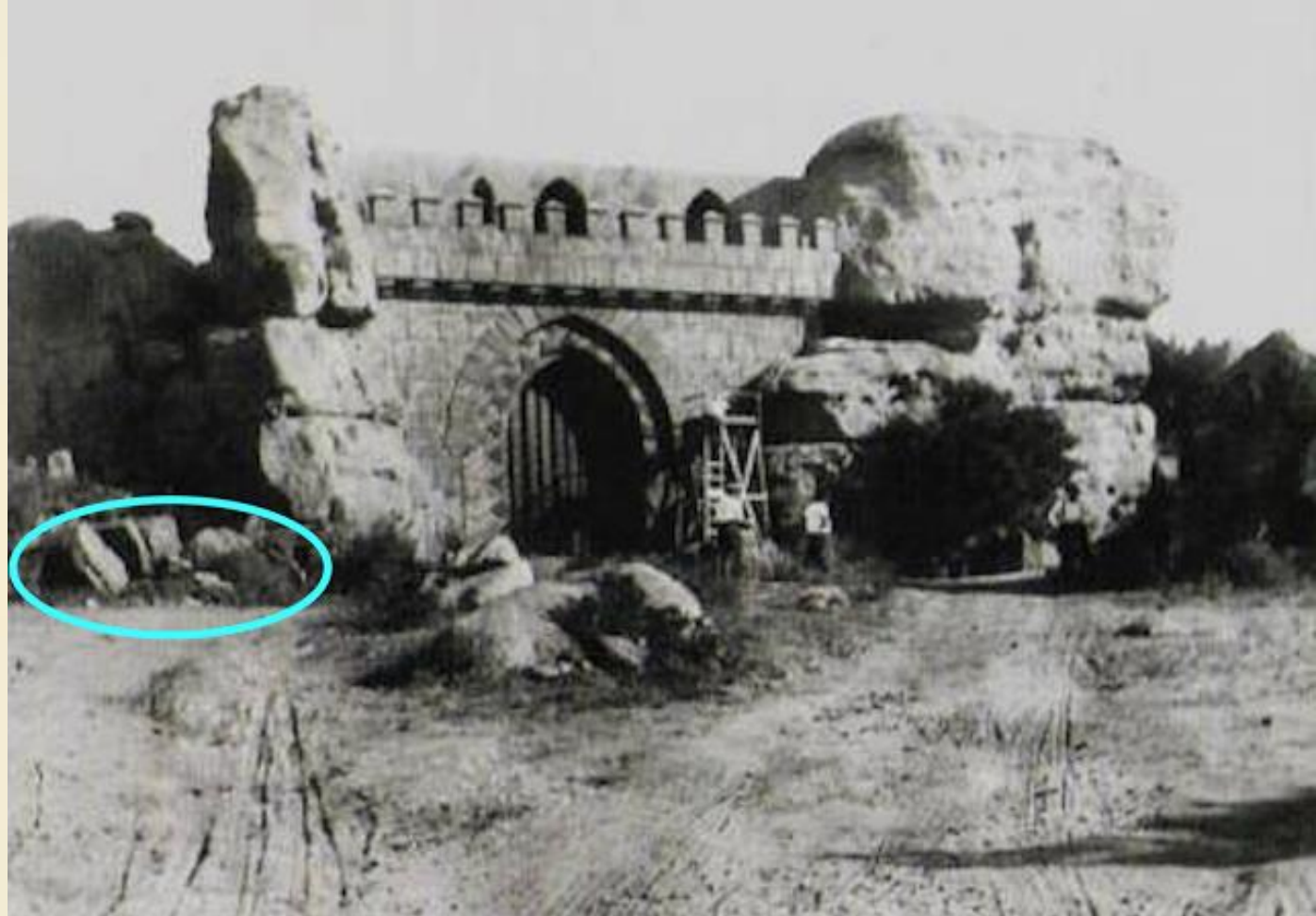
**Tower Rock
(aka the Pinnacle)**

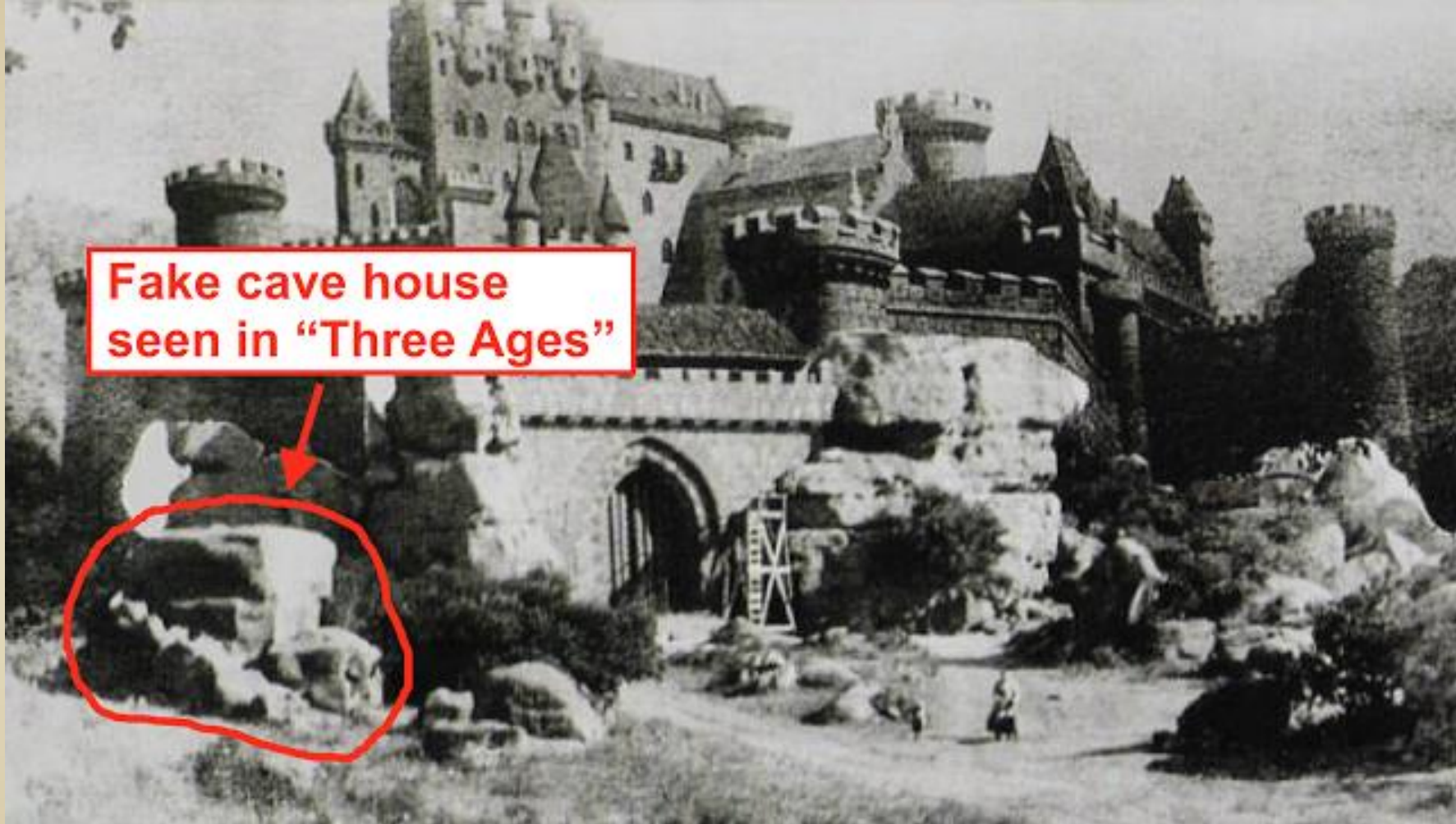
The Sphinx

Notice the distinctive group of small rocks highlighted here in 2015, on the ground below "Tower Rock"



This is that same group of rocks more than 90 years earlier, in the "Richard the Lion-Hearted" photo.





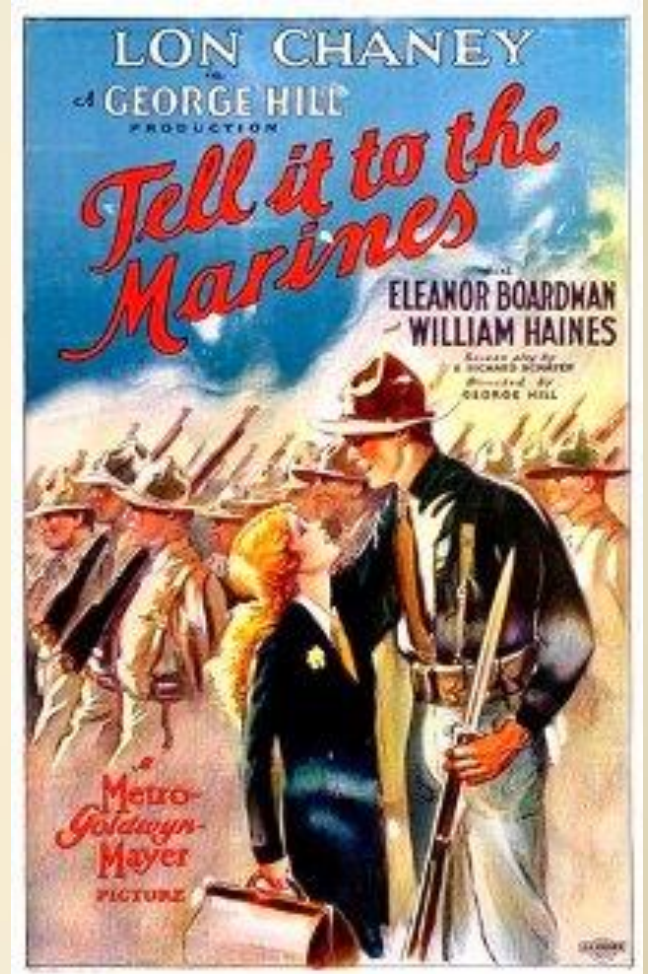
**Fake cave house
seen in "Three Ages"**

Tell it to the Marines

is a 1926 silent movie starring Lon Chaney as a gruff Marine sergeant.

The climactic Chinese Bridge Scene was filmed at Garden of the Gods.

This film is available in DVD format.



"Tell It to the
Marines"

(MGM, 1926)

The Chinese
bridge



"Tell It to the
Marines"
(MGM, 1926)

The Chinese
bridge



"Tell It to the
Marines"
(MGM, 1926)
The Chinese
bridge



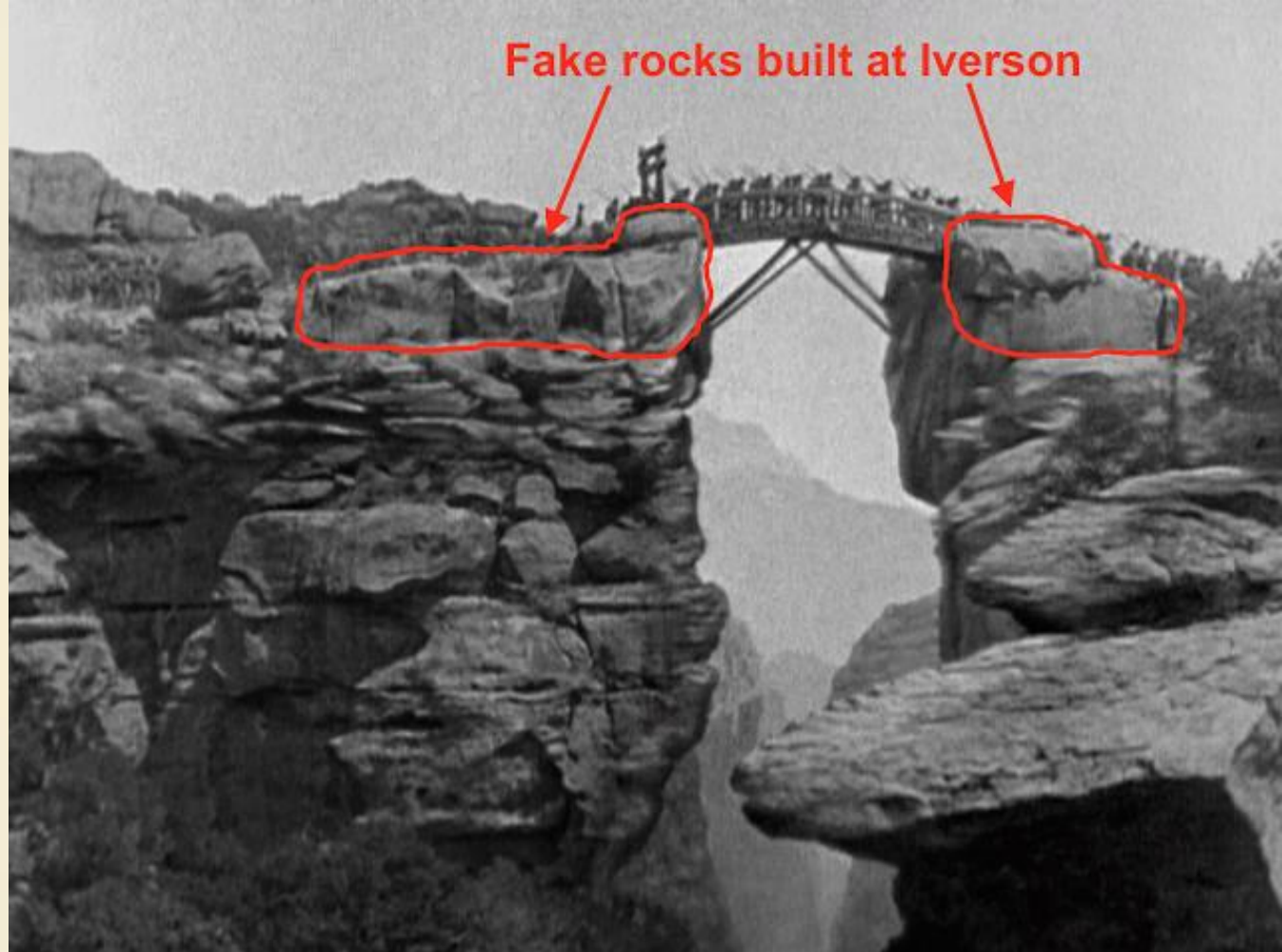
"Tell It to the
Marines"

Bridge spanning a
deep gorge



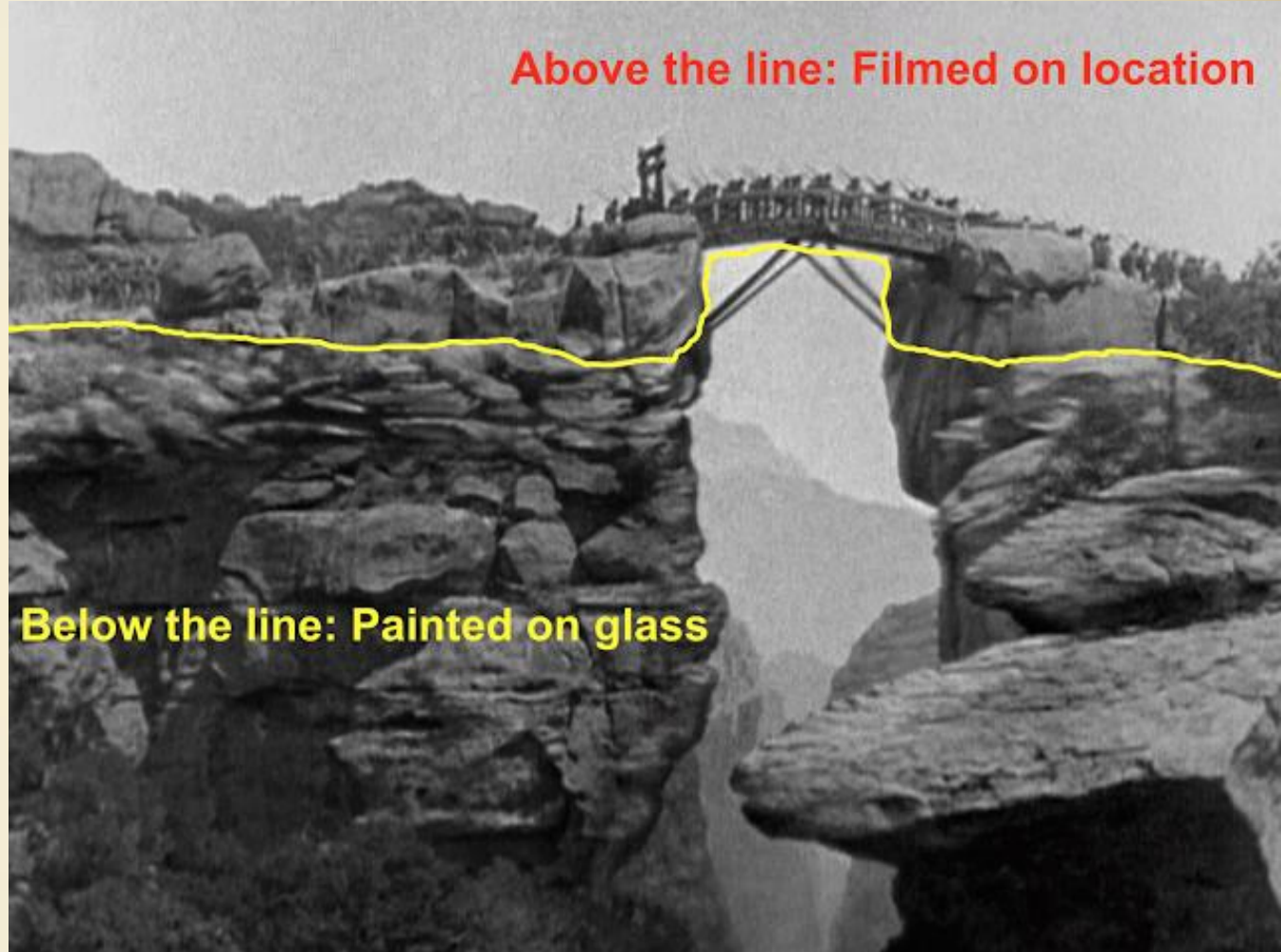
"Tell It to the
Marines"

Bridge spanning a
deep gorge



"Tell It to the
Marines"

Bridge spanning a
deep gorge

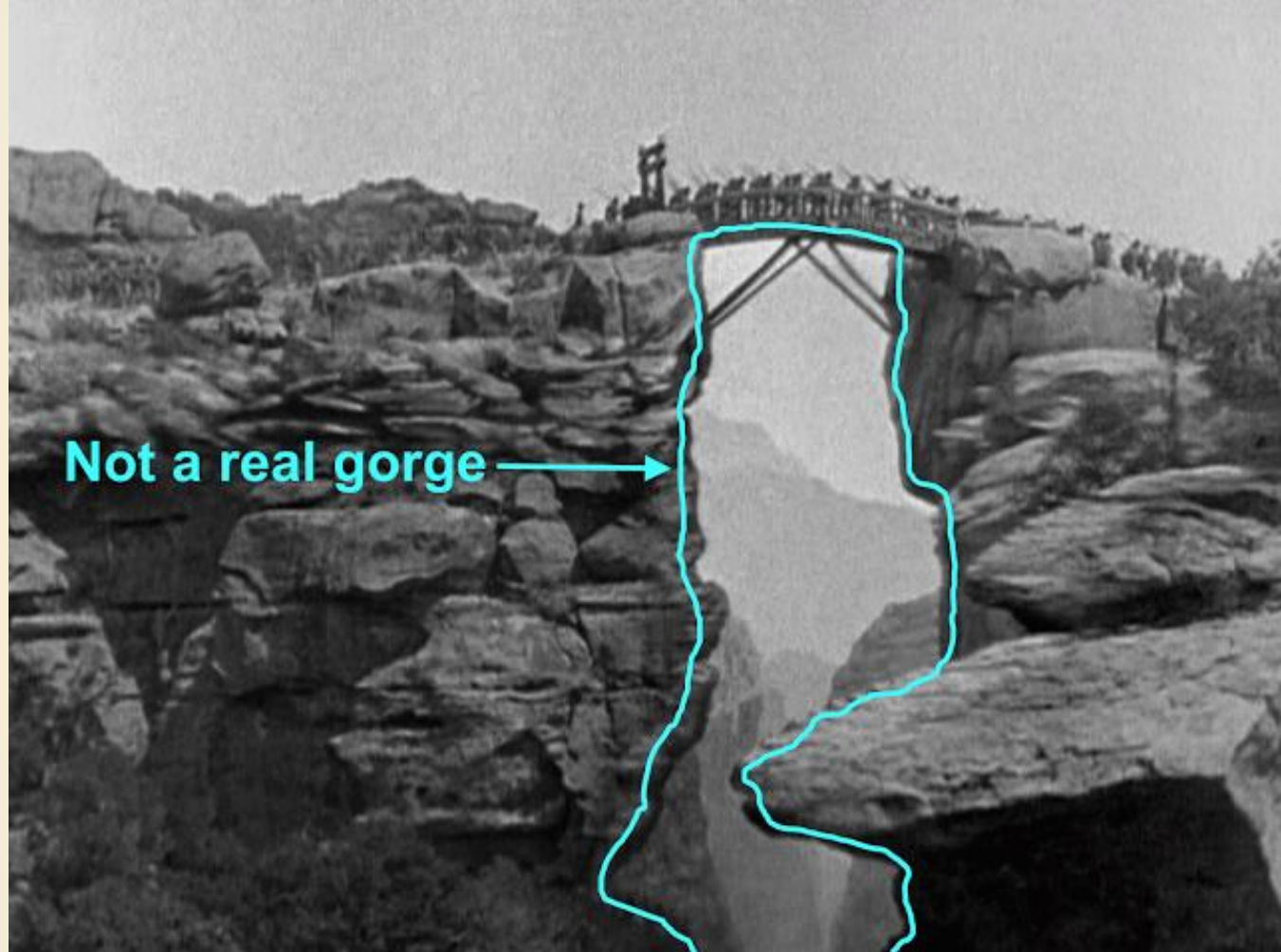


Above the line: Filmed on location

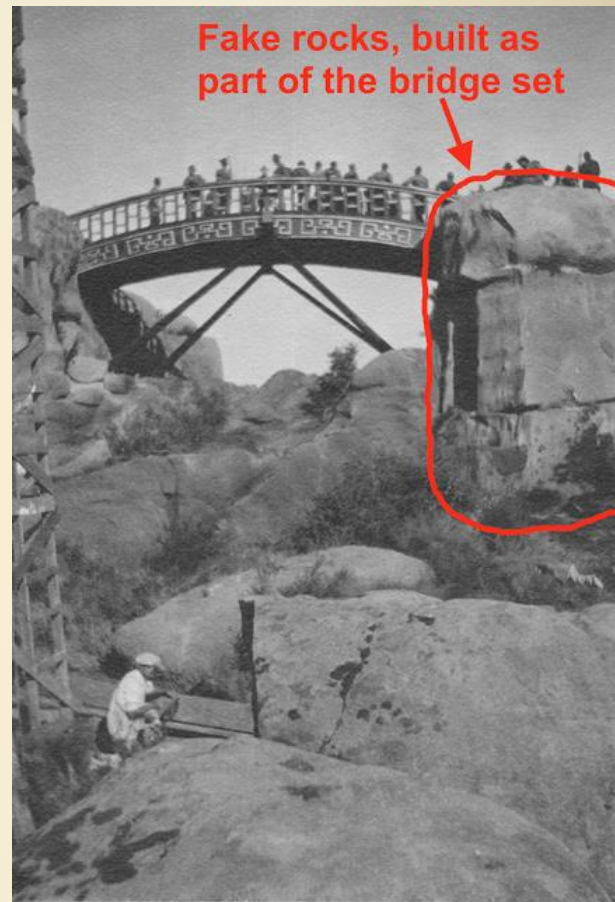
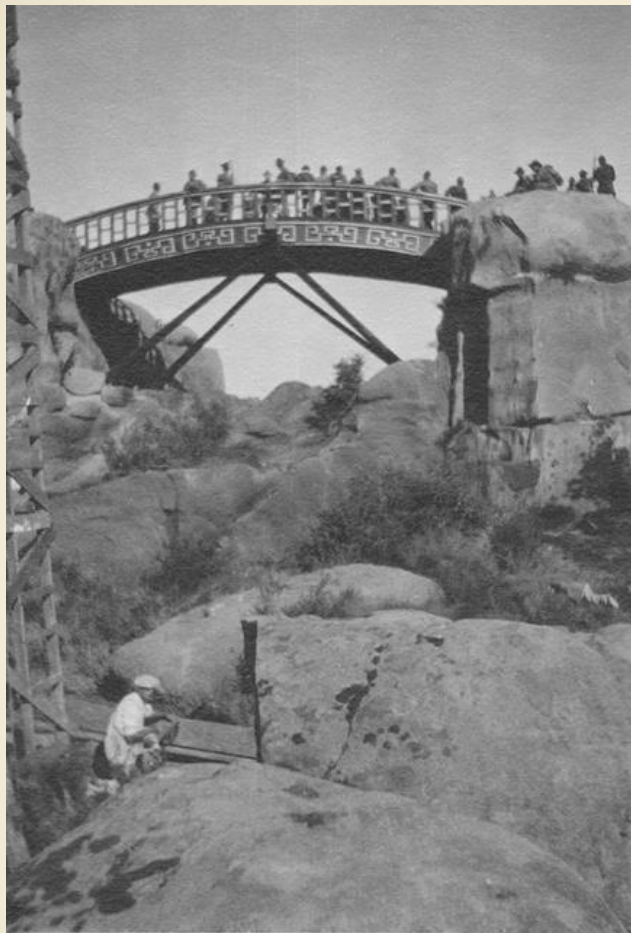
Below the line: Painted on glass

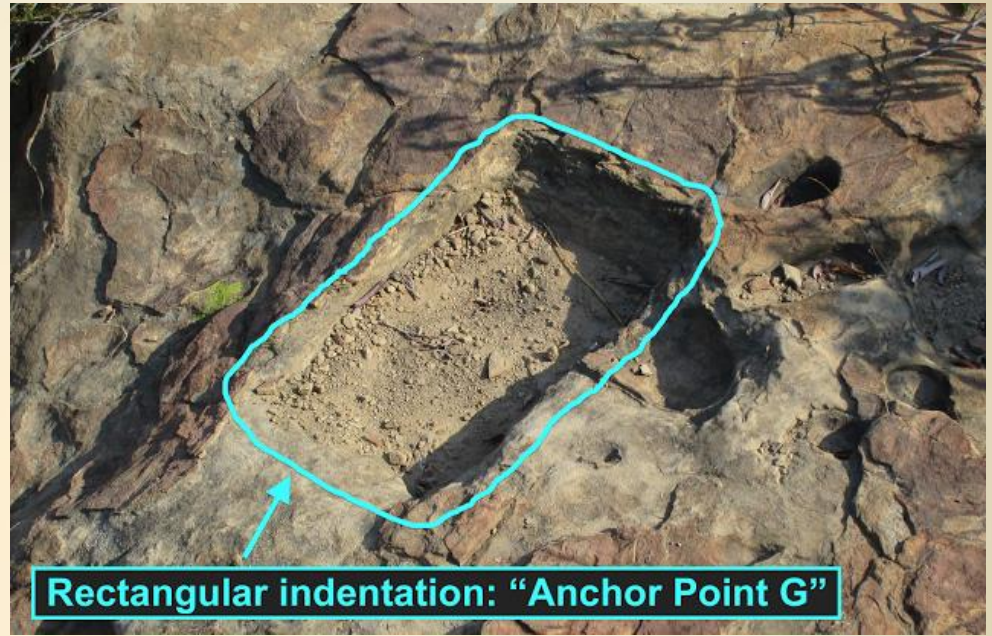
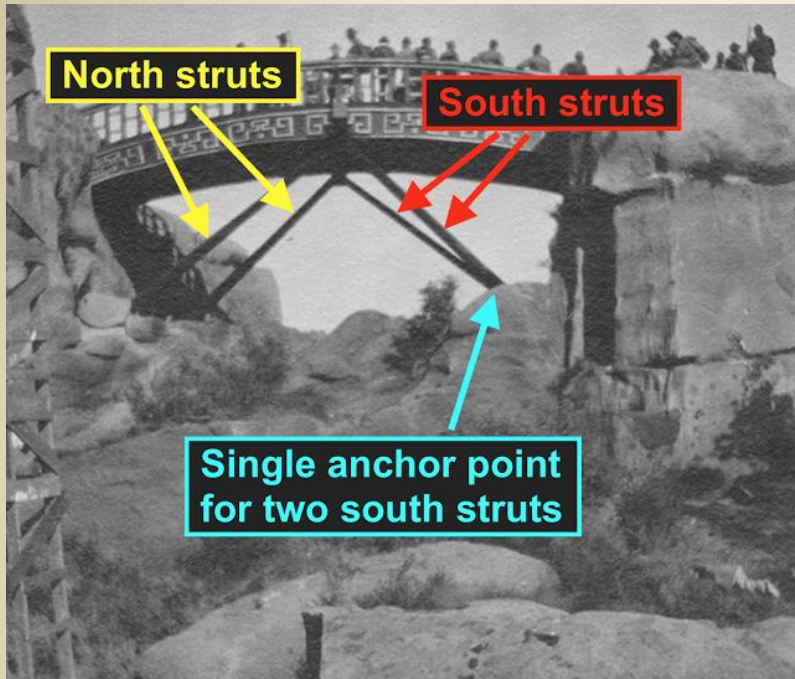
"Tell It to the
Marines"

Bridge spanning a
deep gorge



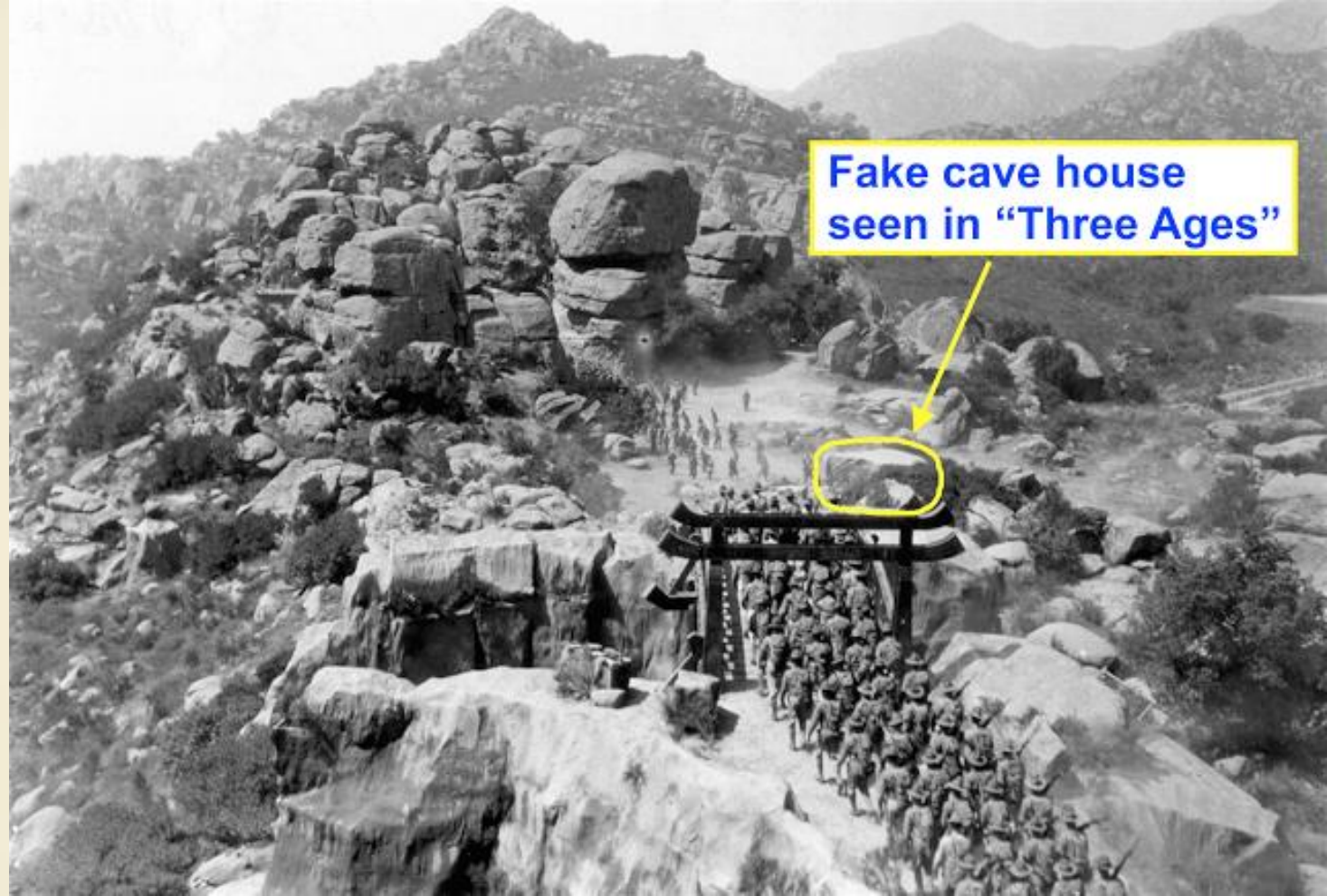
Behind the scenes photo production shot shows that it is not a deep gorge





Single anchor point for the two south struts of Chinese Bridge, identified as "Anchor Point G" in photo to the right.

And yes, the Fake Cave House used in “Three Ages” is in the Chinese Bridge Scene



And now to see how it all turned out!

Following is a 4 minute edited version of the
Chinese Bridge Scene from 1926,

Tell it to the Marines

Available on YouTube at

<https://www.youtube.com/watch?v=9zohROPDySw&t=1s>

Or search for “1926 Tell it to the Marines bridge scenes”



In closing, filming continues at Iverson Ranch.

The following 30 second commercial was filmed on
August 15th, 2015,
at the Garden of the Gods at Overlook Point

Available on YouTube at

<https://www.youtube.com/watch?v=J3i9aowDml0>

Or search for “2015-08-15 James Franco Scion Garden of the Gods clipped”



Sources/Acknowledgements

Log on to iversonmovieranch.blogspot.com, and join the mailing list. You will discover a detailed discussion of filming done at the Iverson Ranch.

This presentation focuses on a small portion of the website, the magnificent and unusual set productions that were created in the silent movie era.

Contributed content by Iverson Historian Ben Burt

Prepared by Dennis Liff, Chatsworth Historical Society, November 2015, revised May 2017