

Smoke Signal

CHATSWORTH HISTORICAL SOCIETY

10385 Shadow Oak Drive, Chatsworth, CA 91311

(818) 882-5614

chatsworthhistory@gmail.com

www.chatsworthhistory.com



Co-Presidents: Linda & André van der Valk

May 2021, Issue #2

Editor: Ann Vincent

Co-Presidents' Message

By Linda & André van der Valk

As I write this article, I hope that we are seeing a light at the end of the pandemic tunnel. We are tentatively scheduling our Open Houses to begin August 1st, and are trying to figure out the rules and regulations that will be in place at the time. We are assuming social distancing and mask requirements will still be in place. To deal with the social distancing we are going to take an idea from our friends at the San Fernando Valley Historical Society and only allow groups of 4 people at a time in the museum and ask others to wait outside and enjoy our beautiful acre.

Although we are looking forward to having Open Houses again, the CHS board has discussed it and decided to cancel Pioneer Day this year. This is not a decision that was taken lightly but considering we are not sure what the future will bring as far as what tier the State is in or if the State is opening up on June 15th there is a lot of work that goes into planning this and normally Ann has already started the process. This year we had planned a Pioneer Day dedicated to Bea Berman, so we were especially excited about this year's Pioneer Day...but it will have to wait.

We thank those who have made donations to the Acre. During the pandemic we had to forego our normal twice-yearly fundraisers and the donations have helped offset our normal monthly expenses.

With the lack of the activity at the acre the gopher problem is out of control and birds are picking at the screens on the cottage to make nests. We have been finding evidence of coyotes coming on to the grounds too. The trees are getting their leaves back and Ray has been working on pruning back the trees with our new docent Henry Becker. Annette, Karen and Nadia have also been busy pruning the roses and cutting back other plants that need it.

We hope that everyone stays safe and healthy and that we will soon get back to normal.
Linda and Andre

Chatsworth Historical Society Board of Directors 2020-2021

Co-Presidents	Linda & André van der Valk
Treasurer.....	Jim Van Gundy
Secretary.....	Donna Nachtrab
Hospitality.....	Jelena Csanyi
Smoke Signal Editor.....	Ann Vincent
Cottage Curator Emeritus.....	Betty Summers
Research Director.....	Ray Vincent
Garden Director.....	Annette Campbell
Director-at-Large.....	Connie Ager

Upcoming Events

Open House

August 1, Sunday 1-4pm

Subject to LA City Covid Rules and Regulations

General Meetings

3rd Tuesday 7:00 PM

The program “**The History of Twin Lakes and Deerlake Highlands**” remains postponed until we can meet in person. We continue to create new programs for future meetings.

Chatsworth Celebrates 133 Years

Founded March 10, 2021

We recommend that you enjoy our Chatsworth Timeline Presentation at:

<https://www.slideshare.net/ChatsworthHistory/chatsworth-timeline-88931351>

DOCENT DOINGS at the ACRE:

Our docents keep busy with projects throughout the year.

OUT IN THE GARDEN:

If you need some outdoor fresh air therapy, come join our gardening team.



IN THE MUSEUM: We have new displays that are available to share when we open.

Open houses are normally scheduled for the first Sunday of each month from 1-4pm, except on Holidays. We look forward to resuming that when the city gives us permission.

IN THE COTTAGE: An inventory project is still underway to confirm and learn more about the history of the items on display so we can provide more information on our tours.

DOCENTS ARE NEEDED: Help guide guests through the museum and cottage during our Open Houses, Tours and Special Events. If you would like to learn the history of our community and help share it with others, please contact us for more information at chatsworthhistory@gmail.com.

Memorial Brick Plaza



Click the link below for the Memorial Brick Order Form, \$100 per brick.

<http://www.chatsworthhistory.com/CHS-BrickOrderForm.pdf>

Our next brick order will be September 1st 2021

For more information, send an email to chatsworthhistory@gmail.com or call 818-882-5614.

WHAT'S BEEN HAPPENING

While we have been social distancing at home, the ACRE has monitored calls made to the Museum with questions. In addition we have received emails from individuals with ties to Chatsworth who would like to continue to learn more about their own history.

Some of the questions took us down paths of research that we could easily do from home offices. We have collected a variety of fun stories that we will share in upcoming newsletters and presentations.

We also want to thank Dot Barber for her newsletter editing skills and contributions.

The Chatsworth Historical Society was Founded 58 Years ago!

....As the story goes... on April 17, 1963, according to the minutes of the first meeting, Virginia Watson, Katharine and Kelly Johnson, Art Honey, Evie Bowers, Keith Watts, and Charles and Eileen Janess all gathered at Katharine Johnson's house. The Historical Society was established that evening as a community organization to save the church and eventually use a portion of it as a museum to contain historical memorabilia.

Included in this newsletter:

NOTE: Since many of our articles relate to previous articles and presentations currently posted on chatsworthhistory.com, links have been provided within the article to access more information on the subject.

Page 3 – Visit with Docent Elaine Campbell

Page 4 - Deer Lake Highlands Brochure

Donation of new material on Deer Lake Highlands in 1927-28.

Page 7- Shadwick (and Rockpointe) History

The Shadwick/Gray family members sent us some fun photos of their family and ranch.

Page 9- New 1905-08 photos of Chatsworth Train Depot, General Store and Bannon Quarry

Courtesy of Rob Roche, from the Roy Aristarchus Carpenter (1878-1965) collection

Visit with Elaine Campbell and Family at the Homestead Acre

We had a fun morning with Elaine Campbell on Friday, April 2. Elaine and her two daughters Carol and Janis came to see the new brick recently installed commemorating Elaine and her family. The museum was not open, but we provided a private tour.

It had been a long time since Elaine visited. Now 99 years old, Elaine will be 100 on January 6, 2022. We had fun discussing all the projects she had worked on in the museum over time and all the events both she and her daughter, Janis, helped with each year.



CD12 2020 Digital Time Capsule Photo of our museum Bear display (at right)

Council District 12 requested a digital photo from the Chatsworth Museum representing the year 2020 for their Digital Time Capsule. Our photo showed our bear dressed up as a cowboy, wearing a Roy Rogers fabric face mask. He is still waiting for visitors.

Chatsworth Historical Society & Museum



Annually our museum display is changed to reflect Chatsworth History. In 2020 our Display case was prepared to highlight our cowboy history and the Iverson Movie Ranch. The museum was suddenly closed. Our bear with his Roy Rogers western memorabilia wears a mask to greet visitors when we get the chance again to welcome them.

The Deer Lake Highlands Brochure

In February, we were contacted by Alfred Beridon, regarding some Deer Lake Highlands documents. His grandmother and mother purchased a parcel in 1928, and he shared the related documents with us.



A 1927 letter from the Chatsworth Land and Building Corporation to his grandmother, stated *“From among the hundreds of answers received to our Guessing Contest, the judges awarded your answer the enclosed check for your guess, which will be accepted by us as a cash payment on a lot in Deer Lake Highlands, which is located twenty-five miles from Hollywood.”*

The check was for \$249, and they ended up purchasing a lot for \$500 in 1928. Included in the documents were some never before published promotional materials from Deer Lake Highlands, which are shown below.

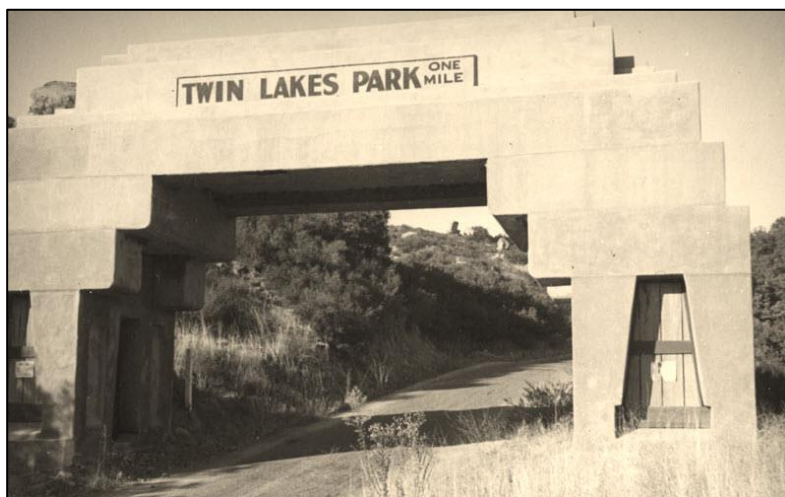
Background: In the 1920s, vacation homes were very popular, and sales peaked in the late 20's before the Depression. Local Real Estate Developments in the Roaring 20's included

Twin Lakes Park, (Mayan/Aztec Theme),
Deer Lake Highlands (North of Twin Lakes),

Cabin Sites, (now Lake Manor and Box Canyon)

Santa Susana Hills Cabin Sites, (near Corriganville) and

Girard (Middle Eastern/Turkish Theme, now Woodland Hills)



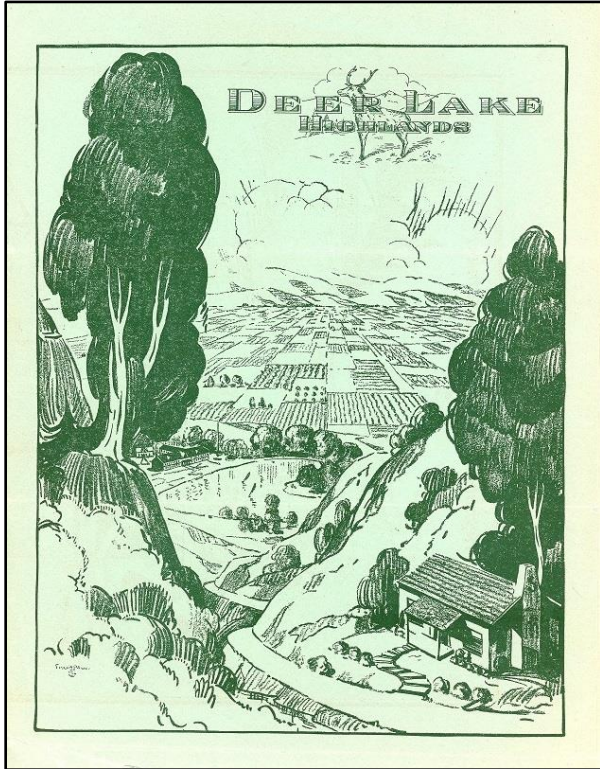
Both Twin Lakes Park and Deer Lake Highlands began selling small lots for vacation or permanent homes in 1926-1927. They operated as different, and perhaps competing, companies, but shared the same access points. The area was the combination of three homestead parcels totaling 369 acres. The twin lakes were formed at the Devils Canyon and Brown's Canyon dams; both dams still exist but have been dry since the late 1940's. But in



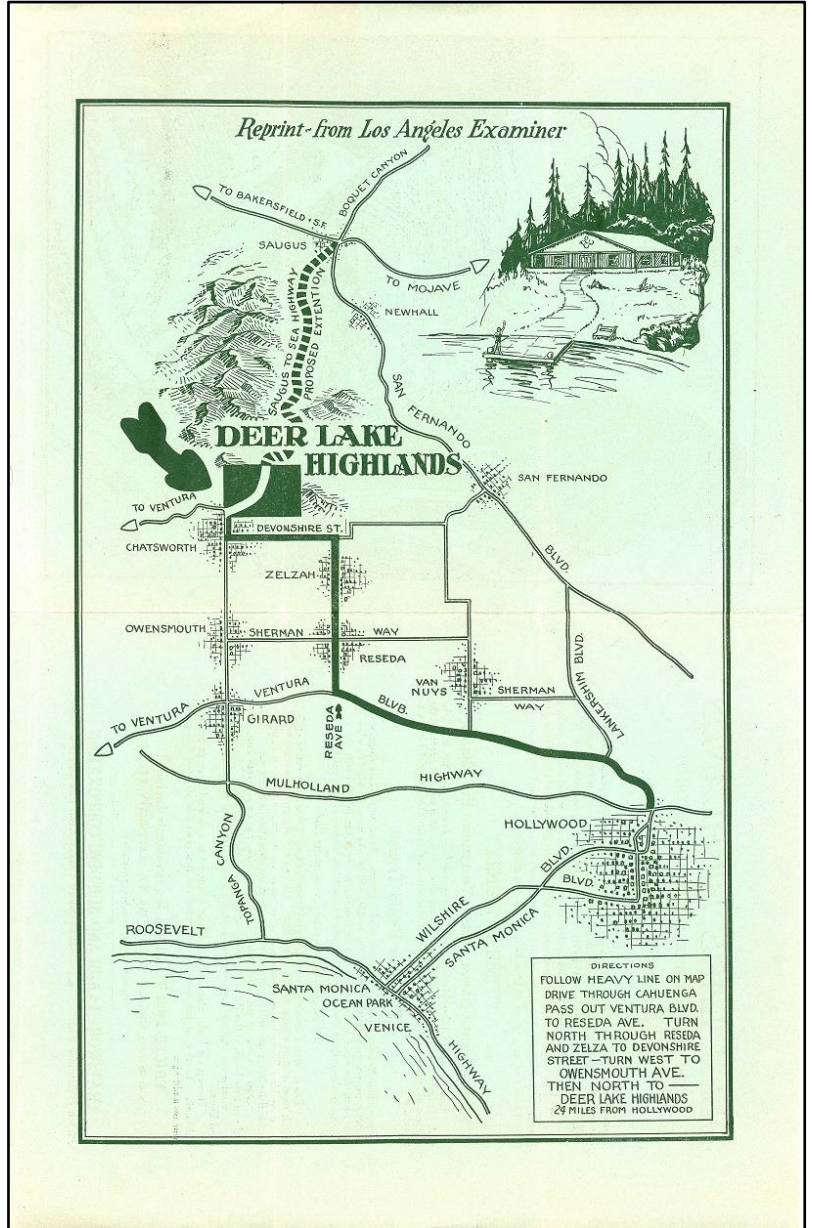
the 1920s, a clubhouse and boat docks were built at the Devil's Canyon Dam, as seen above. Deer Lake Highlands was north of the 1906 Devil's Canyon Dam/Bridge, on the northern plateau.

The 1927 Deer Lake Highlands Brochure was four pages printed on green paper.

Page 1



Pages 2 and 3 (in the center of the folded brochure)



Page 4

DEER LAKE HIGHLANDS
 "THE HOLLYWOODLAND OF CHATSWORTH"
 Ideal Residential—Resort Homesites

— — —

THE Hills of Hollywood occupy, in a larger way, the same position as DEER LAKE HIGHLANDS to Chatsworth. A few years ago all of Hollywoodland could be bought for \$135,000.00. Today it is worth over \$40,000,000.00. Were it not for the magnificent system of roads the owners would still be looking for buyers. So don't underestimate the value of the miles of boulevards that have been built and will soon be in and around Chatsworth; and don't underestimate the value to you, as a buyer, of Deer Lake Highlands property.

"TIME IS MONEY"

Rapid Transit Saves Time—You make the Money

Los Angeles, Lankershim and their sister cities fully believe that the man who said, "Time is money," knew what he was talking about, and that is why they secured the services of those nationally known Traffic Engineers, Kelker and Deleuw of Chicago, to submit

Plans for Rapid Transit

Between Los Angeles and San Fernando Valley points. According to Los Angeles and Burbank papers the estimated cost of the system will be less than \$5,000,000, while the increase in the value of real estate will be startling to those not familiar with the r of great boulevards, of automobiles and rapid transit facilities, or electric car lines.

What Arthur Brisbane says about owning land:

"Learn from Germany's once Crown Prince, back on his landed estate at Oels, that it pays to own a piece of this solid earth. His hope of the crown is gone, or dim, and gone his military hat with skull and cross-bones on it. His millions, or billions of marks, if he has them, will not buy enough to feed the daschunds at his feet.

"Own a piece of the earth, take Voltaire's advice, 'Let us cultivate our garden and you may laugh at the fall of the mark, or the rise of the bolshevism.'"

Real estate agents, here is your Text: "There is No Real Security Outside of Real Estate."

There is no better place on this whole continent to own land than in Southern California. There is no life insurance in the world that is as safe for your family and your own old age.

PRICES \$400 TO \$1250, Improvements Included
 GOOD ROADS, GRADED STREETS, WATER, ELECTRICITY, ETC., ETC.
 Improvements now being installed

CHATSWORTH LAND AND BUILDING CORPORATION
 Phone WEstmore 9431 1054 South Grand Ave., Los Angeles, Calif.

Page 4 introduces Deer Lake Highlands as "The Hollywoodland of Chatsworth".

Notice the proposed "Saugus to the Sea" extension in the map above. We wrote a newsletter article on the subject in our [September 2020 newsletter](#).

And for more information on Twin Lakes, visit our article at chatsworthhistory.com, [Twin Lakes Past Present](#).

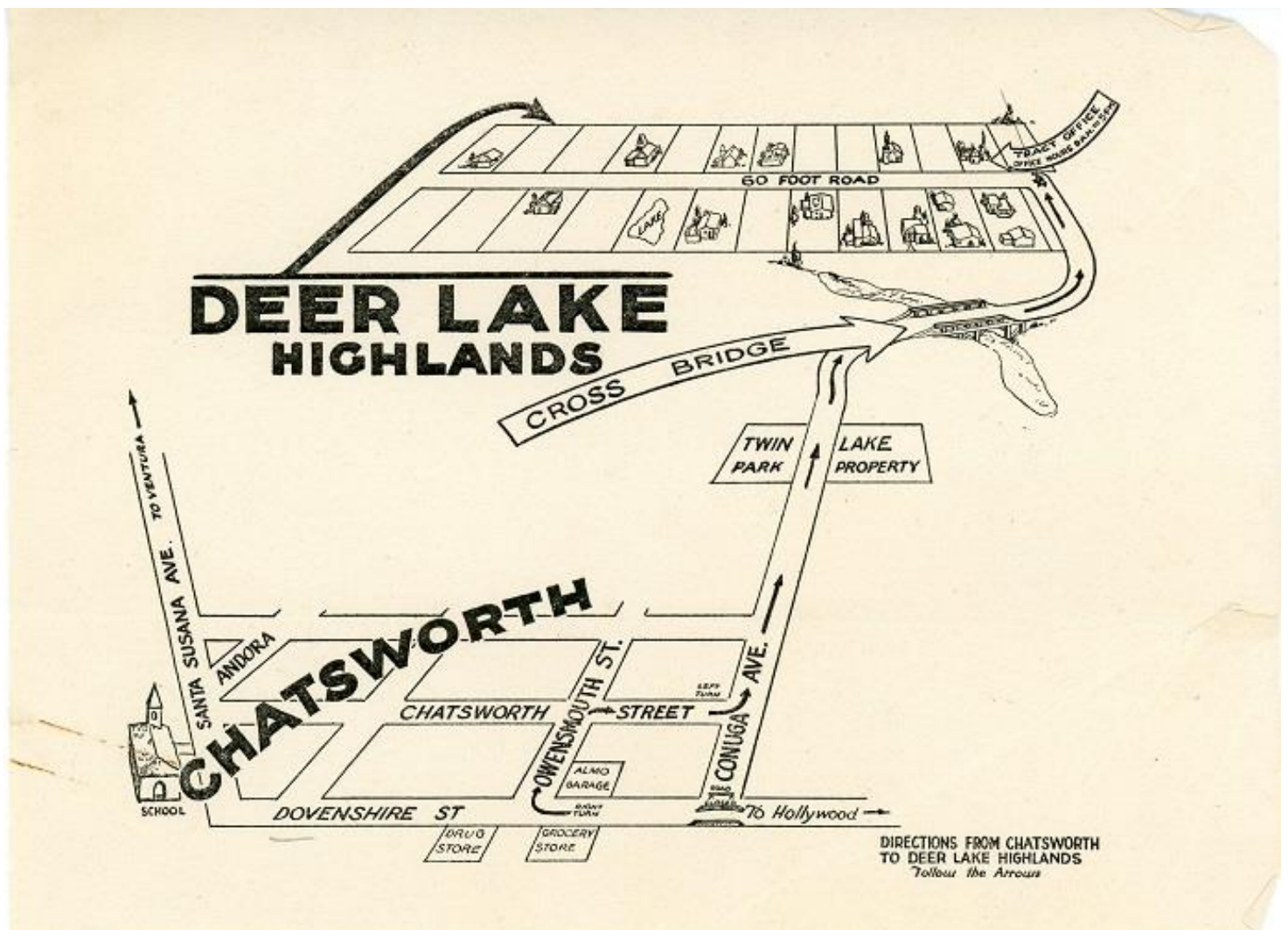
The 1927 map below shows how to get from Hollywood to Deer Lake Highlands. It identifies the Tract Office, Office hours 9am to 5pm.

It shows Owensmouth and Devonshire (misspelled below) as the “center of town”, with a drug store, grocery store and garage. The grocery store was Clements' Grocery & General Merchandise. Albert Clements became the Postmaster in 1915.

The Drug Store was in the 1922 Chatsworth Community Building, co-owned by the Chamber of Commerce and the Chatsworth Women’s Club. Space was also provided for Boy Scouts and Girl Scouts, and the Red Cross. The Post Office was at this building in 1926.

The Almo (Alamo) Garage shown on the map below is today’s Cowboy Palace Saloon. For more history on that building, please visit our article at [Cowboy Palace](#).

And yes, they misspelled Canoga too.....



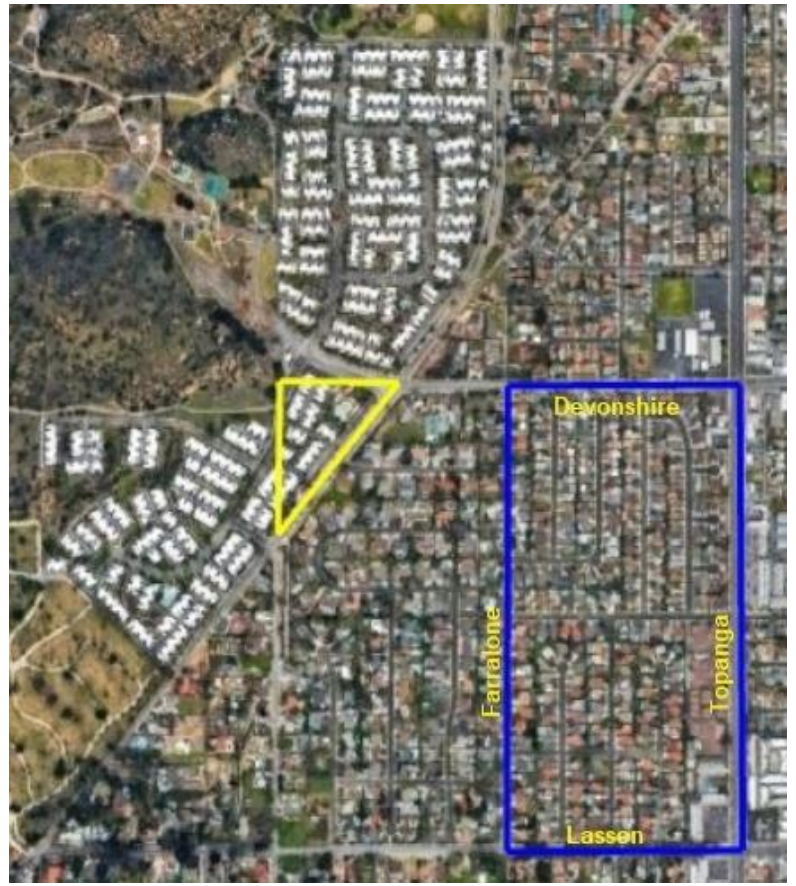
Shadwick (and Rockpointe) History

Nelson Gray moved to Chatsworth in 1893 (1962 “Pigtails to Silver-Grey”), and was a successful investor in real estate. Nelson owned an 80-acre tract north of Lassen to Devonshire, west of Topanga to Farralobne. In 1908, Chester Shadwick (26) married Sarah “Sadie” Gray (22) in Pasadena. Sadie was the first-born child of Nelson Gray and Minerva “Minnie” Collins Gray. More about Nelson Gray and Family in our [Nov 2017 newsletter](#) pgs. 6-8.

In 1911, Chester and Sadie moved “next door” to the Grays on a seven acre parcel that was once a part of the Ackerman homestead.

The Google Earth picture to the right outlines the Gray 80-acre tract in blue, and the Shadwick 7-acre tract in yellow.

The 1928 aerial below outlines the Shadwick ranch in yellow. The top line is Devonshire, the diagonal line was Andora (today’s Valley Circle). At that time, the Santa Susana Creek was a dirt ditch that seasonally flowed down Andora.



Some memories of the Shadwick ranch are shared below.

An excerpt from the 1962 Gray autobiography - “Pigtails to Silver-Grey” - *“That fall (1911) after we returned home, Sadie and Chester (Shadwick) moved to a little house up across from the creek at the foot of the hills to the west (where we heard the doves cooing years before) among large, shady trees.”*

The Shadwick home on seven acres was at 22322 Devonshire (today’s Rockpointe clubhouse). They had seven children, and lived there for more than 20 years (until the early 1930’s).

Photos below from Gray descendant Polly Pastre, thanks for sharing...

A memory from our 2013-04 Smoke Signal article by Lila Schepler – *“Having roasin’ ears and hotdogs was a fun thing for young people down on the old Shadwick ranch (the Home was located about where the Rockpointe Recreation Lounge is today). Roastin’ sticks were out from the willows along the wash (now a concrete flood channel), a few ears of corn picked from their garden, wieners and buns you brought with you and a lovely dinner was made around an open fire. Shadwicks had an old wood range in their kitchen that was a marvel to me; the Shadwick girls could tell the temperature by reaching their hand in the oven and could decide if it needed another stick of wood or if it was ready to bake. Ah, the light and fluffy biscuits I ate there!*



The Shadwicks moved to Bloomington, Riverside by 1935.

Additional property history of 22322 Devonshire:

Sept. 11, 1937 -- the Chatsworth Riding Club and Kennels are announced – Van Nuys News. Saddle Horses and registered Airedales. Unescorted ride \$1.00, escorted \$2.00. Two months later they advertised Greyhounds and Airedales from their kennels. And that was all...

1938-1940 - Alfred Wren (1896-1957) and Mildred Hanawalt Wren (1906-1993) with their sons Richard (1929-2009), Darryl (1930-) and John (1932-1976) were residents per Voter Registration records. In 1942 Alfred had moved to 11051 Mason, employed by the B.F. Porter Estate.

The Shadwick house is gone in a 1944 aerial.

New 1905-08 photos of Chatsworth – Train Depot, General Store and Bannon Quarry

The four photos below are from the Roy Aristarchus Carpenter (1878-1965) collection, and were recently posted on Facebook by his great grandson, Rob Roche.

The Southern Pacific Depot, built in 1893 and burned in 1917.
View northwest.

The tracks traveled west to a turntable between today's Farralone and Shoup.



In 1898, Southern Pacific laid another mile of track into the Bannon quarry, in anticipation of the San Pedro Breakwater contract. For more information, go to chatsworthhistory.com, Digital Archives, Presentations, Chatsworth Railroad History.

We asked Rob what his great-grandfather was doing in Chatsworth? Rob's reply: *"He was a Conductor/Motorman for both the Pacific Electric and the LARy (Los Angeles Railway). He also worked at Terminal Island, Portland Cement and other places. He moved around a lot and took his box camera with him. Why was he in Chatsworth between 1905 and 1928? Who knows, He didn't live there that we know of, but he had wandering feet so that's as good a reason as any I guess."*

Teams of horses loading hay or alfalfa at the Depot

View north. Stoney Point can be seen in the distance, to the right of the boxcar and left of the man on the empty wagon.



View west probably taken from the 2nd story of the 1890 Chatsworth Hotel - A man stands next to a buggy in front of a barn, probably a part of early Chatsworth transportation to and from the Hotel and Train Depot. Behind the barn is the General Store. Fred Graves and Lovell Hill bought the store in 1906 after the death of Mr. and Mrs. Jackson, the previous owners.

(enlarged crop of photo below)



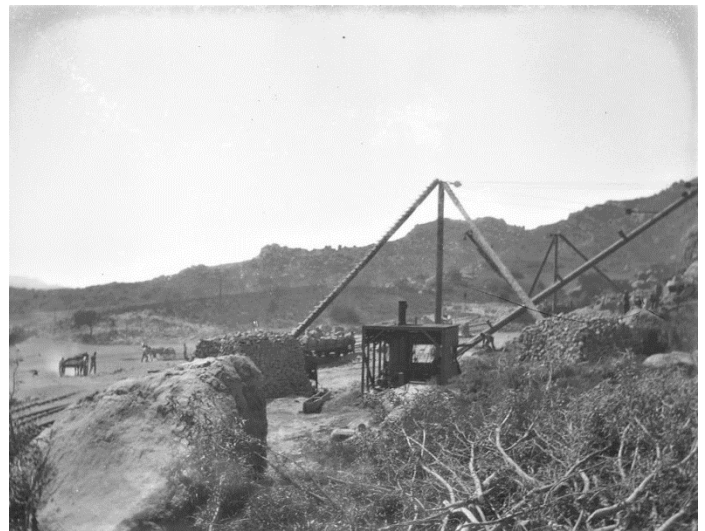
The barn is just west and a little north of the hotel, and was probably used to store buggies, horses, wagons, etc.

The Bannon/Chatsworth Park Quarry

View looking south from the end of the quarry spur. Steam operated derricks loading railroad cars.

Notice in the enlarged crop below, that the derrick poles are buried in stacked rock foundations.

For more information and photos of the Quarry, go to chatsworthhistory.com, Digital Archives, Presentations, Chatsworth Hills Homesteaders Part 2, pgs. 25-38.



Virginia Watson Museum & Gift Shop

The following items are available for sale during Open Houses on the first Sunday of the month. To arrange to purchase items at other times, email chatsworthhistory@gmail.com to make arrangements for payment and shipping, if necessary.

CHATSWORTH HISTORY by Virginia Watson	\$10.00
CHATSWORTH PARK ELEMENTARY SCHOOL The First 100 Years by Ioline Cleveland	\$10.00
WINDOW INTO THE PAST by William Schepler	\$10.00
QUIET ON THE SET by Robert Sherman	\$25.00
OUR PIONEER MOTHER As told to Lenora Johnson MacDonald	\$10.00



DIGITAL ARCHIVES online at
<http://www.chatsworthhistory.com>

facebook CHS FACEBOOK PAGE
www.facebook.com/HomesteadAcre

CHS YOUTUBE Channel
youtube.com/chatsworthhistory1/videos

SLIDESHARE.NET
<https://www.slideshare.net/ChatsworthHistory/presentations>

Slideshare has a listing of our CHS presentations that can easily be watched online. We now have a total of 33 PowerPoint presentations posted. Enjoy!

Can we email our newsletter to you?

Please email us to provide your email address.
 Thanks! chatsworthhistory@gmail.com

Wondering if your Dues are Due?

Your dues are due one year after the last time you paid your dues.

For those receiving email only newsletters, we will advise you by email when your dues are due.

For snail mail, if you have an asterisk at the end of your name on the mailing label, your dues are due.

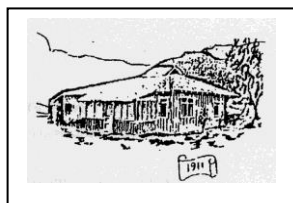
Please use the form below to renew your Membership. And if your neighbor is not a member yet, pass this newsletter on to them and invite them to join.

CHATSWORTH HISTORICAL SOCIETY

Membership Form

Your membership helps support our Homestead Acre and the educational and historical programs we provide for our community. Members receive our quarterly newsletters, and receive invitation reminders regarding our monthly programs and annual events – Rose Pruning, the Garden Festival, Membership Roundup, and Pioneer Day. Please mail this form with your annual membership dues and/or contribution made payable to:

Chatsworth Historical Society, 10385 Shadow Oak Drive, Chatsworth, CA 91311
chatsworthhistory@gmail.com 818-882-5614 www.chatsworthhistory.com



- | | | | |
|------------------|---------------------------------------------|-----------------------------------------|-----------------------------------------------|
| Yearly: | <input type="checkbox"/> New Member | <input type="checkbox"/> Renewal | |
| Life Membership: | <input type="checkbox"/> Individual \$15.00 | <input type="checkbox"/> Family \$20.00 | <input type="checkbox"/> Organization \$20.00 |
| | <input type="checkbox"/> \$ 125.00 | | |

NAME _____ Phone: _____

STREET ADDRESS: _____ Email: _____

CITY / STATE / ZIP: _____

Special Interest / Expertise: _____

Reminder: If you got this mailed to you, an asterisk on your label means your dues are due!