

Smoke Signal

CHATSWORTH HISTORICAL SOCIETY
10385 Shadow Oak Drive, Chatsworth, CA 91311
(818) 882-5614
www.historicalsocieties.net



Co-Presidents: André & Linda van der Valk

September 2012, Issue #4

Editor: Ann Vincent

Co-Presidents' Message

By Linda & André van der Valk

Pioneer Day is right around the corner. We hope that everyone comes and enjoys the Acre and all the fun things that Bea has planned. Again this year will be "The Chili Cook-Off" and the "Chores of Yore". Dr. Gary Standke will again have his blacksmith display where the kids can make a horseshoe. Keene Engineering is again sponsoring the gold panning which is also a big hit with the kids.

As we say every year we need all the help we can get. Set up Saturday morning is at 9:00 am on the 6th and tear down on the 7th around 4:00 pm are two crucial times for help. No need to call just show up.

For your information the city has finally done the brush clearance at Chatsworth Park South which is a big relief for us. The weeds and brush were getting to be a big concern for the Acre, Rockpointe and the homes behind the Acre. We continue to be in touch with the Councilman's office in order to monitor the park's re-opening as soon as possible.

Hope to see everyone at Pioneer Day and stop by the museum and see the new display on Stoney Point.

Linda and André

Pioneer Day

By Bea Berman

Just a reminder, October is almost here and our annual Pioneer Day is scheduled for October 7th from 11:00 am – 4:00 pm at the Homestead Acre.

There will be fun for everyone with gold panning, blacksmithing, rock chippers, wood carvers, spinning and weaving, the Veterans quilt display, chores and game of yore and lots of vendors to explore.

Of course, our mini chili cook-off will begin providing samples at 11:00 am until the chili runs out. If you would like to enter, please call me at (818) 341-5449 and if you would like to bake for our great bake sale we would appreciate your talents.

We can always use help for set-up. Come Saturday morning at 9:00 am or stay late on Sunday at 4:00 pm. Spread the word to your friends about Pioneer Day and come help us make this a successful event.

Bea Berman, Chairman

Chatsworth Historical Society
Board of Directors 2012-2013

Co-Presidents	Linda & André van der Valk
Programs, Ways & Means.....	Bea Berman
Membership.....	Keith Watts
Treasurer.....	Ray Vincent
Recording Secretary.....	Elaine Campbell
Smoke Signal.....	Ann Vincent
Museum Curator.....	Virginia Watson
Cottage Curator.....	Betty Summers
Hospitality.....	Jelena Csanyi
Garden Director.....	Jim & Betty Summers
Director-at-Large.....	Beverly King
Director-at-Large.....	Connie Ager
Permanent Member.....	Lila Schepler

Upcoming Events

October 7, 2012 – Sunday 11-4 pm PIONEER DAY

Come enjoy the surroundings of the Historic Acre as we provide the opportunity to see Chatsworth as it was in the early days of 1888, when the town was formed. Games and Chores of Yore will be available for the kids to experience. This year the museum display will focus on Stoney Point, Historic-Cultural Landmark #132. Our Chatsworth Pioneer Family information will also be on display.

October 16, 2012 – Tuesday, 7:00 pm

Program: The History of STONEY POINT

Our museum has been updated to display some amazing Stoney Point photos and information. Come hear the stories about what makes this rock formation the identifying landmark for Chatsworth.

November 20, 2012 – Tuesday, 7:00 pm

Program: TWIN LAKES Community History

Did you know there were lakes just above the 118 freeway at Topanga and Canoga in 1927? Come learn the history behind this unique neighborhood.

Monthly - Museum Open House

The Homestead Acre is open to the public the first Sunday of each month from 1 to 4 pm. The next open house will be Pioneer Day, Oct 7th followed by Sunday, November 4th.

22nd Annual
Pioneer Day

Sunday, Oct. 7, 2012

11 a.m. to 4 p.m.

***Old-time fun
for everyone!***

- CHILI COOK-OFF
 - Bake sale
- Woodcarvers 
- Entertainment
 - Panning for gold
- Spinning and weaving
- Veteran quilt display
- Kids designing quilt squares
- Rock Chippers
- Blacksmith
 - Indian artifacts
- “Chores and Games of yore”
and lots more!



Chatsworth Museum Exhibits

Featuring Stoney Point
and Chatsworth Pioneer Families

Tour Minnie's 1911 Cottage

(11 - 4 p.m.)

Location:

Homestead Acre, Chatsworth Park South
(West end of Devonshire St.)
10385 Shadow Oak Drive, Chatsworth, CA

Information: (818) 882-5614

www.historicalsocieties.net

Donation:

Adults: \$5, Children: \$1
(Free for kids under 5)

**Presented by the
Chatsworth Historical Society**

Park your car at the Chatsworth Train Depot (10038 Old Depot Plaza Road)
and use our free shuttle service, every 15 minutes from 11 a.m. To 4 p.m.

CHATSWORTH PAST & PRESENT

By Ann & Ray Vincent

September 2012

The Story of Today's Chatsworth Depot

Chatsworth has a rich history of Train Depots. The original



Chatsworth Depot 1893

Chatsworth Depot was built in 1893 near the intersections of Marilla and Topanga. The depot burned down in 1917, and was replaced by Depot #2 across the

tracks from where the current station is now.

Depot #2 was torn down in 1962, and Amtrak used a concrete platform on DeSoto Ave. as the Chatsworth Stop until the new Depot was built.



Chatsworth Depot 1917-1962

This article is the story of Depot #3, the 1996 Chatsworth Transportation Center....

After Depot #2 was dismantled in 1962, the 13 acre lot owned by Southern Pacific sat vacant until 1990. In February 1990 Southern Pacific received permits to build a lumber transfer station. The plan was to ship lumber by rail to the site and then transport the material by truck to its final destination. The lumber terminal would route 70 heavy lumber transport trucks per day in a loop off the 118 at Topanga Canyon to Devonshire and then to DeSoto back to the 118.

In July of that year, citizens became aware of the project and its ramifications. Residents quickly rallied to stop the lumber terminal, printing 3,000 flyers and distributing them to households and businesses. Susan Amerikaner and Michele DeGaetano organized the first community meeting held August 16th. It was a united front with citizens, homeowners associations, the Chatsworth Chamber of Commerce and the LA School Board to encourage and support Councilman Bernson in his efforts to stop the project. Los Angeles city officials immediately issued an order halting construction of the 70% completed facility.

On August 21st, 150 people attended a meeting downtown, and in a unanimous vote, the City Building and Safety Commission agreed that they had erred in not first studying the effect the facility would have on nearby residents. The City Planning Commission voted 5-0 to implement a one-year building moratorium.

In October 1990, the County agreed to buy the 13 acres with plans for the site to become a transportation center. The community group Citizens for Chatsworth took the lead at this point, as Bernson joined civic and business leaders in calling for construction of a railroad station "that reflects the cultural and architectural heritage of Chatsworth". At a community planning meeting on October 25th, citizens were encouraged to express their views on the proposed new commuter rail station. The letter on the next page from Roy Rogers Jr. (Dusty Rogers) was read to the group.

In 1992, Metrolink service to Chatsworth was initiated with a platform and a few open-air shelters; soon thereafter, Amtrak relocated its stop there from the crossing of De Soto Avenue and the tracks further south.

The Chatsworth Transportation Center, completed in 1996, was designed to resemble the community's first depot. Local celebrity residents Roy Rogers and Dale Evans attended the station dedication that April. The goal of the committee charged with planning the facility was to have a hub of activity



Chatsworth Station completed in 1996

surrounding the Transportation Center. A child care facility and Chamber of Commerce offices occupy the building. The train lobby/waiting area provides a convenience store/snack bar surrounded by local history of the Chatsworth area on display. Additional shops include a local travel agent and during the few years while displaced by renovation, our local Chatsworth Library occupied a small section of the depot to keep library access open to the Chatsworth Community.

In June 2012, the Los Angeles Metro Orange Line was extended from Canoga to the Chatsworth Transportation Center. The dedicated busway has an accompanying bikeway alongside it. Amtrak, Metrolink, Orange Line, City bus routes, bicycle and pedestrian walk ways...Chatsworth has it all!

Roy Rogers - Dale Evans Museum

16650 Seneca Road, Victorville, California 92392

Roy Rogers

Dale Evans Rogers

10/25/90

TO: MR. NICKOLAS PATSAOURAS (RTD)
MR. RICHARD STANGER (LACTC)
COUNCILMAN HAL BERNSON
CITIZENS FOR CHATSWORTH

Ladies and Gentleman:

I thank you all, for giving me the opportunity to address this meeting tonight!

I would love to be there in person but as some of you know by now, my father, (Roy Rogers) has undergone a serious heart operation on Monday, and is still in intensive care. However I felt it was very important that I got a chance to say what Chatsworth has meant to the Rogers family.

To give you all a little background as to the Rogers involvement in the community, I will start by saying: We moved to the little town of Chatsworth in 1952 or three. I was only eight years old at the time, so it's hard to remember. We had moved from the big city of Encino, California. Dad said "We need to get our children out into the country, where they can grow up, go to school and ride horses," without the fear of being run over by the crazies from the big city.

We moved into a large house at the end of Lassen Street and Andora. The old house is still there, by the way. We were just up the road from the Oakwood Cemetery!!! We lived on a 138 acre ranch, with horses, cattle, chickens, pigeons, pigs, hound dogs, etc. Mom and Dad raised nine children on the ranch. What a flood of memories come back to me as I think of the Chatsworth Ranch. Watching the many studio film crews filming such shows as: Brave Eagle, Comanche, Cochise, with Chuck Connors, the Roy Rogers Show, and many others! The rock formations, that are so unique to the Chatsworth area, gave my brother and I many hours of climbing fun. The only supermarket in town was on Topanga Canyon Road. You could still buy pickles from a barrel.

Chatsworth Elementary School, where my brother and sisters attended school. The 5 & Dime Store, the little hot dog stand where we would spend our allowance on one cent candies.

Still hang on to the old values of yesteryear. They want their children to have the same things our parents wanted for us.

As I sit here by my father's bedside, I think back to the days when Chatsworth was a small quiet community. I appeal to the leaders of your city, and to the people who ultimately hold the fate of what happens to Chatsworth in their hands. To remember the old days, when things and life were simpler. My mind often drifts back to Sunday school at the old Methodist Church. It stood like a beacon on a little two lane road called Topanga Canyon Road. If it weren't for citizens, who thought it should be preserved, it too would be only a memory. Instead it was relocated in a beautiful spot in the Oakwood Cemetery. A monument to our past heritage.

Thank God there are people who are concerned enough to "Dare" make noise in an apathetic world!! People like Michele and Susan. Ladies who will stand up for what they think is right. After all it is all our responsibility to preserve a part of our past for our children!

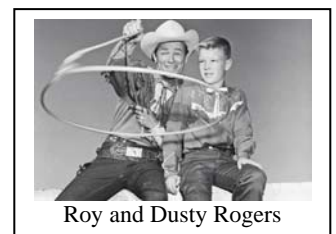
We as Americans take so much for granted! We use our resources up like there is no tomorrow, and at this rate there won't be. Let's stop for a moment and think of what is really important. We often say to ourselves "If it does not directly affect me, why get involved!" We must get involved to save what is good in our towns. My father was once Mayor of Chatsworth! He took over just after Andy Devine was Mayor. I myself went to Chatsworth High School. Our family owned and operated the Aqua Sierra Gun Club, which is now Chatsworth Park South. I think of all the movie crews that set up at Stoney Point and Iversons Ranch. You citizens of Chatsworth have a real piece of history in your hands. Handle it with care!!! It is one of a kind, and cannot be replaced.

In closing, I hope I have not rambled on too much. If it were not important to Chatsworth, I would not have taken the time to write to you all! We feel the resurrection of the old train depot should be a must do project, in the minds of all the citizens! I urge you all to look to the future, with a reverence for the past.

May I borrow a quote from Mr. Patsaouras: "We want to plan it so that fifteen years from now, we can look at it and say... we did the right thing," Only thing I would like to add to that is: "One hundred years from now, let our grandchildren say, Thanks Grandma and Grandpa."

God Bless you all in your endeavors. If there is anything the Rogers family can do to help, call.

Respectfully,
Roy Rogers, Jr.



Roy and Dusty Rogers

It's Your Community...

It's Your History

The Chatsworth Historical Society would like to have you join us in preserving Chatsworth's past. If you have any old Chatsworth publications, like the Grapevine, or have old photos of the area. We would love to have copies of your photos, but we would also like to hear your stories about growing up in Chatsworth or what brought you to Chatsworth and why you stayed here.

Can we Email our newsletter to you?

In an effort to reduce costs, save paper, and provide you with a color copy, we will now email newsletters to those of you that have given us an email address. However, we will also continue to send you a snail-mail copy until you advise us not to. So please email us at chatsworthhistory@gmail.com to stop future newsletter mailings and save us some money. And also please email us to provide your email address. Thanks!

Please use the form below to renew your Membership. And if your neighbor is not a member yet, pass this newsletter on to them and invite them to join...

Wondering if your Dues are Due?

There is a code on your address label (if you are a life member, there is no code).

- The first digit represents membership type, 1 – individual and 2 – family/organization.
- The next two digits represent the month that you last paid your dues.
- The last two digits represent the year that you last paid your dues.
- If the month and year on your address label is over one year old, then your dues are due!

For those receiving email only newsletters, we will advise you in the email if your dues are due.....

HAPPY TRAILS TO YOU....

Dale sat down and in about a half hour and on the back of an old envelope she wrote down the words and the tune to 'Happy Trails.' She taught it to the Sons of the Pioneers that afternoon, and that evening they did it on the radio — they played it on the radio and sang it. Everybody loved it and it became their theme song.

It shows you what you can do in a half an hour, if you just put your mind to it.

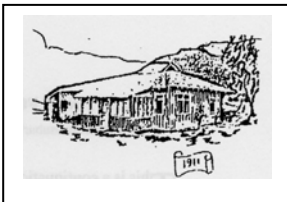
Interview with Dusty Rogers

<http://tasteofcountry.com/roy-rogers-100th-birthday/>



CHATSWORTH HISTORICAL SOCIETY

Membership Form



Your membership helps support our Homestead Acre and the educational and historical programs we provide for our community. Members receive our quarterly newsletters, and receive invitation reminders regarding our monthly programs and annual events – Rose Pruning, the Garden Festival, Membership Roundup, and Pioneer Day. Please mail this form with your annual membership dues and/or contribution made payable to:

Chatsworth Historical Society, 10385 Shadow Oak Drive, Chatsworth, CA 91311
818-882-5614 www.historicalsocieties.net

- | | | | | | |
|-------------------------|-------------------------------------|----------------------------------|---|---|---|
| Yearly: | <input type="checkbox"/> New Member | <input type="checkbox"/> Renewal | <input type="checkbox"/> Individual \$15.00 | <input type="checkbox"/> Family \$20.00 | <input type="checkbox"/> Organization \$20.00 |
| Life Membership: | <input type="checkbox"/> \$ 125.00 | | | | |

NAME _____ Phone: _____

STREET ADDRESS: _____ Email: _____

CITY / STATE / ZIP: _____

Special Interest / Expertise: _____

Chatsworth Historical Society
Virginia Watson Museum & Gift Shop

The following items are available for sale at our Gift Shop for you history buffs that would like to share some Chatsworth History with others.

The Museum will be open for tours Pioneer Day and November 4th from 1-4 pm and items can be purchased at that time.

To purchase items other than the first Sunday of the month, call the museum at 818-882-5614
Or email chatsworthhistory@gmail.com to make arrangements.

Booklets and Books

CHATSWORTH HISTORY by Virginia Watson \$10.00

CHATSWORTH PARK ELEMENTARY SCHOOL The First 100 Years
by Ioline Cleveland \$10.00

WINDOW INTO THE PAST by William Schepler \$10.00

QUIET ON THE SET by Robert Sherman \$25.00

OUR PIONEER MOTHER As told to Lenora Johnson MacDonald \$10.00

See you at Pioneer Day October 7th!

Chatsworth Historical Society

10385 Shadow Oak Drive
Chatsworth, Ca 91311

RETURN SERVICE REQUESTED

Check the code on your mailing label ...is it time to pay your dues? (See page 5 for details)