

Smoke Signal

CHATSWORTH HISTORICAL SOCIETY
10385 Shadow Oak Drive, Chatsworth, CA 91311
(818) 882-5614
www.historicalsocieties.net



Co-Presidents: André & Linda van der Valk

April 2012, Issue #2

Editor: Ann Vincent

Co-Presidents' Message

By Linda & André van der Valk

Last month the Santa Susana Pass State Historic Park hosted Senator Fran Pavley. The Senator was given a tour of the park and then was brought over to the Acre. The Senator was given a quick tour of the museum and house. We were honored that she came for the quick visit.

A few days after the tour the Historic Park was given a one year reprieve from being closed. There had been a donation made to keep Los Encinos State Historic Park open. Since the two parks share rangers it enabled the park to stay open for another year and give the volunteers that were going to take over running the park some time to get everything in place for them to keep it open. The Foundation wants to undertake this task, and has been looking for funds to pay the insurance they need to run the park. There are sixty plus volunteers that patrol the park, remove graffiti and just keep a general eye on the park. Unfortunately their visitor center was broken into last month and two of their display cases were vandalized. The visitor center is not open yet and they did not have anything in the displays as of then.

Everyone at the Acre is busy getting ready for The Garden Festival, April 29th. Bea as always is getting it organized and Jelena is busy preparing for the tea. The gardens look beautiful thanks to Betty, Jim, Beverly and Annette. Connie has been busy sorting and pricing all the donations for the White Elephant sale.

If you have any time to volunteer for the event or the set up and tear down please do. This year we are going to be a little short handed. Contact Bea and let her know if you can help.

Happy Spring
Linda and André

Chatsworth Historical Society
Board of Directors 2011-2012

Co-Presidents	Linda & André van der Valk
Programs, Ways & Means.....	Bea Berman
Membership.....	Keith Watts
Treasurer.....	Ray Vincent
Recording Secretary.....	Elaine Campbell
Smoke Signal.....	Ann Vincent
Museum Curator.....	Virginia Watson
Cottage Curator.....	Betty Summers
Hospitality.....	Jelena Csanyi
Garden Director.....	Jim & Betty Summers
Director-at-Large.....	Beverly King
Director-at-Large.....	Connie Ager
Permanent Member.....	Lila Schepler

Upcoming Events

April 17, 2012 – Tues. 7 PM

Chatsworth Park Elementary School

Our April General Meeting will focus on Chatsworth Park Elementary School. From the first school building to the current and the history of the families, teachers and students that have attended from 1880 to 2012 over 132 years. Come join us and share your Chatsworth Park Elementary School experiences. So far HOT DOG DAY takes top billing as a favorite memory.

April 29, 2012 – Sunday 11-4 pm

GARDEN FESTIVAL & TEA

Put this on your calendar now and plan to be there! We can use extra help at setup on Saturday morning and take down following the event on Sunday. See the attached flyer on page 4.

May 15, 2012, Tues 7 PM

Installation of Officers

This is the month that we install our officers for the next term from May 2012 to May 2013. Please join us for the installation of officers. In addition we invite you to bring a piece of history from your own life to share.

Monthly - Museum Open House

The Homestead Acre is open to the public the first Sunday of each month from 1 to 4 pm. The next open house will be May 6th followed by June 3rd.

GARDEN FESTIVAL

By Bea Berman

Time flies so fast and before we know it, the Garden Festival will be upon us. Plans are underway for Sunday, April 29th at the Homestead Acre from 11:00 - 4:00 PM. Due to the park still being closed, we will have a shuttle bus from the train depot every fifteen minutes starting at 11:00 am. It should be a great day with all the garden clubs showing their plants, arts and crafts booth, tours of the museum and cottage, fabulous bake sale, white elephant booth and of course our wonderful Duchess High Tea from 11:30 – 1:30 PM. Everything is homemade, nothing store bought and at 2:00 PM we will have our Polynesian dancers. A great day is planned for all.

If you have any new or like new white elephant items, I can be reached at (818) 341-5449. Also, if you would like to bake for our bake sale, we would appreciate your contributions.

Hope to see you on the 29th of April. If anyone would like to help us set up, we meet Saturday, April 28th at 9:00 AM. Coffee and donuts will be available.

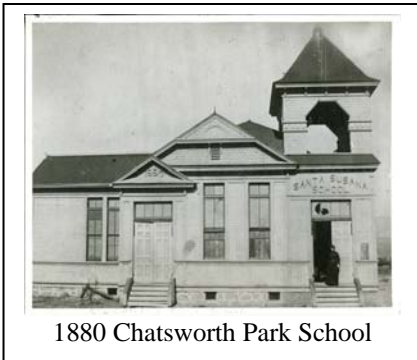
OFFICERS

As reported at the Business meeting held on April 3, 2012, the slate of proposed officers are as follows.

Co-Presidents	Linda & André van der Valk
Programs, Ways & Means	Bea Berman
Membership	Keith Watts
Treasurer	Ray Vincent
Recording Secretary	Elaine Campbell
Smoke Signal	Ann Vincent
Museum Curator	Virginia Watson
Cottage Curator	Betty Summers
Hospitality	Jelena Csanyi
Garden Director	Jim & Betty Summers
Director-at-Large	Beverly King
Director-at-Large	Connie Ager
Permanent Member	Lila Schepler

These officers will be officially elected and installed at the May 15th General Meeting.

Chatsworth Park Elementary School

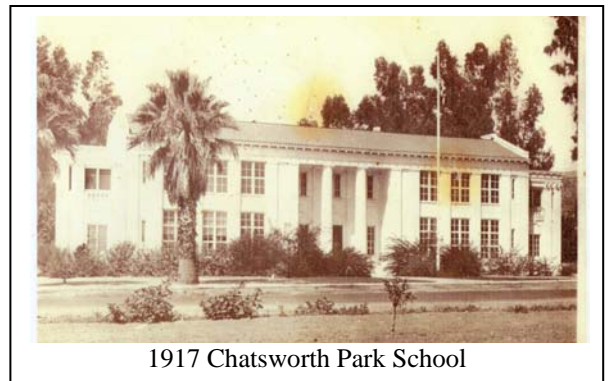


1880 Chatsworth Park School

Join us on April 17th at our General Meeting night at the Chatsworth Historical Society as we review the history of our own Chatsworth Park Elementary School.

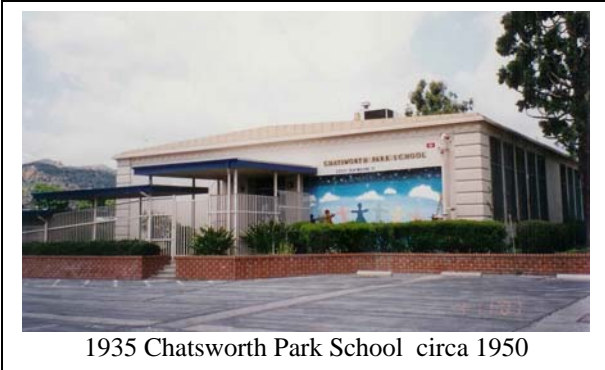
Built in 1880, when the community was called Chatsworth Park, the current building today is still in the same location as that first school building. We will have class photos from some of our early residents who attended through the 8th grade and a collection of class photos from 1955 through the 1980's.

The Chatsworth Historical Society is fortunate to have a history on the school collected by Virginia Watson and a collection of photos donated by Ioline Cleveland, who also wrote "Chatsworth Park Elementary School - The first 100 years". If you don't already have a copy of Ioline Cleveland's book, copies will be available at the meeting on April 17th for \$10.00 each.



1917 Chatsworth Park School

Going on 132 years now, help us keep this history up to date by



1935 Chatsworth Park School circa 1950

contributing class photos or PTA event

photos along with your memories as a parent or student at this school. Your memories of your favorite teachers or school events are welcome to share at the meeting or by email for us to include. It is hard to believe that students born in 1950 are now over 60 years old, so spread the word that those old school photos are still wanted to add to our collection to keep it up to date. Come share your stories and invite others who attended for this trip down memory lane and a chance to see our photo collection and how your memories and photos can be recorded for the future.

THE CHATSWORTH CENTENNIAL QUILT

As presented by Ruth Grant and Zena Thorpe on March 20, 2012

This is Our History Book in Fabric and we wanted everything on the quilt to represent Chatsworth. The quilt squares are done in pictorial appliqué and are renditions of pictures that are in our museum collection.

The large square in the center is a picture of the Hill-Palmer cottage which was our major inspiration. It is surrounded by roses because the cottage garden is a showcase of beautiful trees, plants, and especially roses. It is the only remaining homestead cottage in the San Fernando Valley that has a garden. At the top is a stage coach traveling on the Santa Susana Pass through the Santa Susana Mountains. Below the stage coach there is a square of the unique rock formation of Stoney Point which is rich in archeological information and is a city park. The first square to be finished was done by Zena Thorpe and is of the Pioneer Church which was built in 1903 and was moved to Oakwood Cemetery and restored by our Historical Society in 1963 to save it from being demolished.

Below the Acre square is the first school in Chatsworth. I made this square in honor of my mother who taught in the Chatsworth Elementary School in 1922 and 1923.

Another square with the Santa Susana Mountains is a movie scene with the Lone Ranger.

At the bottom of the quilt is our 100th Birthday Cake. It is on a tablecloth knitted for the quilt by Roberta Weinstein. She was a tireless volunteer worker who was famous for the tablecloths that she knitted for raffles to benefit local causes.

The four comers are a botanical profile of the area---walnuts, olives, oranges and acorns.

The bottom border features a ballet dancer, Heather Watts, who was born in Chatsworth and was a Prima Ballerina with the New York City Ballet. During the time we were working on the quilt I was visiting Denmark and was very impressed when I saw her dance in Tivoli Gardens. Her parents, Keith and Sheila Watts were very active members of the Historical Society, and Keith still is. We decided to include this now famous dancer in our design. On the other side of the bottom border there are horses. If the quilt was to be all about Chatsworth, it had to include horses.

The sunbonnets in the top border are in honor of the dedicated docents who wear pioneer costumes and give tours of the cottage, the museum and the gardens when we have our First Sunday of the Month Open House and also when we

schedule special tours. The poppies are also in the border because they are the State Flower of California.

Zena Thorpe completed the first square to be included in the quilt and she also made the final square. In the center of the bottom border is the coat of arms of the Duke of Devonshire. The Chamber of Commerce of our town was given permission to use it by the 10th Duke of Devonshire because our town was named for his home, Chatsworth House, in Derbyshire, England. Zena is from that part of England so she was happy to volunteer to make that square.

The outside border of the quilt is designed to represent a film strip. Film strips are no longer used but they were used for the huge number of old time movies that brought fame to our community.

The back of the quilt is also important. The signatures in the muslin backing were collected at community events during the year that we worked on the quilt for a one dollar donation each to help pay for the fabrics and the quilting supplies that we used. The names in the hearts are the names of the women who worked on the quilt and they were not added until the rest of the quilt was finished.

The Historical Society chose to make a quilt to celebrate Chatsworth's 100th birthday so we should look at some of the quilting.

In addition to all of the traditional quilting there are crosses quilted in the sky above the Pioneer Church, stars quilted in the film strip border and abc's above the Chatsworth Elementary School. The quilt squares that surround the Hill Palmer cottage are the North Wind pattern (an obvious choice for Chatsworth) and the pattern of the squares that cross the four corners is called the Road to California.

The night before the quilt was to be presented at the community birthday party I mentioned to Zena that we should have quilted the familiar wind symbol, a blowing cloud face in the sky, above the Hill Palmer cottage because of the North Wind quilt squares. Nothing more was said but the next day when I arrived at the party guess what was in the sky above the cottage? A special memory I have is of Zena who because of her involvement in this community project was launched on a path to become one of the most famous pictorial appliqué quilters in the world today.

I want to say that it was a joy to work on this quilt with so many talented and helpful ladies and it will always be a time I visit frequently in my memories.

Ruth Grant---March 20th, 2012





Over 300 Rose Bushes in Bloom

Chatsworth Historical Society Presents

A GARDEN FESTIVAL

Featuring Roses and Crafts

The Duchess Tea Room
Afternoon Tea

- \$10 per person
- 11:30 a.m. – 1:30 p.m.



Blooming Rose Gardens

Quilt Display from the
Veteran's Quilt Project

Arts & Crafts

White Elephant Sale

Garden Clubs

Polynesian Dance Revue
(2 p.m.)

Museum Exhibits

Featuring Chatsworth Pioneer Families

Tours of Minnie's Cottage
(11 - 4 p.m.)



Bake Sale

Live Plant Sale

Hot Dogs and Sodas

Note: Parking is limited at Chatsworth Park South

Park your car at the Chatsworth Train Depot (10038 Old Depot Plaza Road) and use our free shuttle service, every 15 minutes from 11 a.m. to 4 p.m.

Sunday, April 29, 2012

11 a.m. to 4 p.m.

\$5 Admission Donation – Children \$1
Kids under 5 Free

THE HOMESTEAD ACRE

At the First Stop Sign in **Chatsworth Park South**

(West End of Devonshire Street)

10385 Shadow Oak Drive, Chatsworth, CA 91311

Information: 818-882-5614

All Proceeds go to the Chatsworth Historical Society for the preservation of the Minnie Hill Palmer Homestead Acre and the Virginia Watson Chatsworth Museum

It's Your Community...It's Your History

The Chatsworth Historical Society would like to have you join us in preserving Chatsworth's past. If you have any old Chatsworth publications, like the Grapevine, or have old photos of the area, the Chatsworth baseball field, any of the schools, or churches here in the area, we would love to have copies of your photos, but we would also like to hear your stories about growing up in Chatsworth or what brought you to Chatsworth and why you stayed here.

We are trying to document some of the established businesses that have been part of the community, so if you have photos showing those businesses...or history on them....please share. Time creeps up on us and anything more than 30 years ago is suddenly history. This is the information we still remember, but our children won't, unless we make the effort to preserve it. If you have digital photos you can email them to chatsworthhistory@gmail.com or call us at 818-882-5614 and leave a message. We can also scan your originals for you.

Wondering if your Dues are Due?

There is a code on your address label (if you are a life member, there is no code).

- The first digit represents membership type, 1 – individual, and 2 – family/organization.
- The next two digits represent the month that you last paid your dues.
- The last two digits represent the year that you last paid your dues.
- If the month and year on your address label is over one year old, then your dues are due!

Please use the form below to renew your Membership. And if your neighbor is not a member yet, pass this newsletter on to them and invite them to join...



Lester Smith Jr. & The Natural High Group. They performed the Chatsworth Song at a variety of Centennial Events in 1988.

DID YOU KNOW...there is a CHATSWORTH SONG?

to hear it and see the words, go to

<http://www.chatsworthhistory.com> and select Videos- Chatsworth History

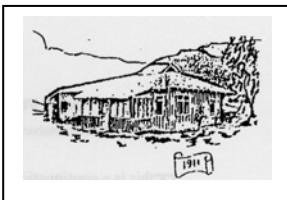
The song was written by Lester Smith Jr. for the Chatsworth Centennial Event held in 1988.

Song posted courtesy of Chatsworth.PATCH.com



CHATSWORTH HISTORICAL SOCIETY

Membership Form



Your membership helps support our Homestead Acre and the educational and historical programs we provide for our community. Members receive our quarterly newsletters, and receive invitation reminders regarding our monthly programs and annual events – Rose Pruning, the Garden Festival, Membership Roundup, and Pioneer Day. Please mail this form with your annual membership dues and/or contribution made payable to:

Chatsworth Historical Society, 10385 Shadow Oak Drive, Chatsworth, CA 91311
818-882-5614 www.historicalsocieties.net

- | | | | |
|-------------------------|---|---|---|
| Yearly: | <input type="checkbox"/> New Member | <input type="checkbox"/> Renewal | |
| Life Membership: | <input type="checkbox"/> Individual \$15.00 | <input type="checkbox"/> Family \$20.00 | <input type="checkbox"/> Organization \$20.00 |
| | <input type="checkbox"/> \$ 125.00 | | |

NAME _____ Phone: _____

STREET ADDRESS: _____ Email: _____

CITY / STATE / ZIP: _____

Special Interest / Expertise: _____

Chatsworth Historical Society
Virginia Watson Museum & Gift Shop

The following items are available for sale at our Gift Shop for you history buffs that would like to share some Chatsworth History with others.

The Museum will be open for tours March 4th from 1-4 pm and items can be purchased at that time.
To arrange to purchase items other than the first Sunday of the month, call the museum at 818-882-5614
Or email chatsworthhistory@gmail.com to make arrangements for shipping if necessary.

Booklets and Books

CHATSWORTH HISTORY by Virginia Watson \$10.00

CHATSWORTH PARK ELEMENTARY SCHOOL The First 100 Years
by Ioline Cleveland \$10.00

WINDOW INTO THE PAST by William Schepler \$10.00

QUIET ON THE SET by Robert Sherman \$25.00

OUR PIONEER MOTHER As told to Lenora Johnson MacDonald \$10.00

See you at the Garden Festival Sunday, April 29th

Chatsworth Historical Society

10385 Shadow Oak Drive
Chatsworth, Ca 91311

RETURN SERVICE REQUESTED

Check the code on your mailing label ...is it time to pay your dues? (See page 5 for details)