

Smoke Signal

CHATSWORTH HISTORICAL SOCIETY
10385 Shadow Oak Drive, Chatsworth, CA 91311
(818) 882-5614
www.historicalsocieties.net



Co-Presidents: André & Linda van der Valk

Dec 2010, Issue #5

Editor: Ann Vincent

Co-Presidents' Message

By Linda & André van der Valk

I can't believe we are already in November. I want to thank Bea Berman and everyone involved in Pioneer Day for making it a great day. Bea again made sure that the weather was great because the next day it poured. We felt that the attendance was a bit low but the people who came seemed to have a great time.

Our Virginia Watson was recognized at the Chatsworth/Porter Ranch Chamber's Legends and Heroes Luncheon that took place on October 21st at the Porter Valley Country Club. It was a well deserved award and Virginia's daughter Judy came from Bridgeport to see her mother receive the award. Along with Virginia, Councilman Greig Smith, PALS LAPD Officer Elizabeth Sandoval, LAPD Chaplain Ken Crawford and Gloria Pollack were recognized. Andre was the MC and we all had a great time seeing Virginia be honored by the community. Virginia is now writing articles on our local history for Chatsworth Patch so if you have a chance look up her articles they are always great. Chatsworth Patch is an on line local news website.

We hope everyone has happy and safe holidays.
Linda and André

Chatsworth Historical Society
Board of Directors 2010-2011

Co-Presidents	Linda & André van der Valk
Programs, Ways & Means.....	Bea Berman
Membership.....	Keith Watts
Treasurer.....	Ray Vincent
Recording Secretary.....	Elaine Campbell
Smoke Signal.....	Ann Vincent
Museum Curator.....	Virginia Watson
Cottage Curator.....	Betty Summers
Hospitality.....	Jelena Csanyi
Garden Director.....	Jim & Betty Summers
Director-at-Large.....	Beverly King
Director-at-Large.....	Evelyn Hutcheson
Permanent Member.....	Lila Schepler

Upcoming Events

December 14th, 7:00 PM - Annual Chatsworth Historical Society Christmas Party

Please join us as we celebrate the holidays at the home of: Andre and Linda van der Valk

10524 Eton Avenue, Chatsworth

If possible RSVP 818 882-5614. It is not necessary but we would like to get an approximate headcount for the food and beverages, and yes, you can bring a guest.

December 12 Sunday – Holiday Parade 1:00 PM

The Chatsworth Holiday Parade is December 12th and the theme is Candyland. There will be festivities in the Train Depot parking area before and after the parade from 11-5. The parade starts at 1:00 pm.

January 18, 2010 – Tues. 7 PM - General Meeting Iverson Movie Ranch Program

On Monday, January 18th at 7:00pm, Chatsworth Historical Society will host Jerry England, author and historian, who will discuss film making at Iverson Ranch. Jerry will present a video of movie stills shot on location throughout Chatsworth, including Westerns, and films such as Tarzan and "The Fighting Seebees" featuring John Wayne.

Please join us for this presentation and see the Iverson Ranch display currently in the Chatsworth Museum.

Monthly - Museum Open House

The Homestead Acre is open to the public the first Sunday of each month from 1 to 4 pm.



Virginia Watson (right front), at the Legends and Heroes Luncheon, Surrounded by Bea Berman (left), Elaine Campbell Betty Summers and Linda van der Valk (back row)

Ways and Means


By Bea Berman

It seems so long ago, but it is never too late to say THANK YOU to everyone for making our Pioneer Day a success. We always worry about help, but our dedicated people always show up.

At set-up besides our regulars including Ray and Ann Vincent, Connie Ager, Tom Harrison, Jelena Csanyi, Bob Dager, the Huffman boys and even Dr. Gary Standke, we also had volunteers from Chatsworth High School working for community service hours.

We made about \$3,800 and it was a beautiful day.

Chatsworth Historical Society
Pioneer Day
Chili Cook-off



- Chili Samples 50¢ each
- Judging starts at 11:00 am
- Chili available until it runs out
- Prizes awarded at 1:00 pm

The Chili Cook-off didn't have as many people as we have had in the past, but those that participated had outstanding chili and we all enjoyed it. Besides Buck from the Munch Box, we invited Sheriff Scott Chew and the crew of Fire Station #96 to assist in our judging this year.

Thank you to all the participants.

Our winners were:

1st Place – Nina Austin

2nd Place – Yorks & Lancs (John Thorpe & family)

3rd Place – Tim Imel

Our dependable gate workers were Irene Nalbandian, Diane Kartiala and Barbara Pampalona. Our Chores of Yore were supervised by Harriet van Tiger while Elaine Campbell and her daughter Janis ran the White Elephant booth. Beverly King and Betty Summers provided tours of the cottage all day long. Rod and Loretta Sandavol provided lots of goodies and sold those and others donated for our bake sale.



Dr. Standke had his great blacksmithing display and his wife Nita, cooked fresh baked biscuits for us to enjoy. Pat Keene and his group once again provided gold for the children to find while experiencing the adventure of panning for gold. Additional opportunities to see how crafts



were made the pioneer way, were provided by the Rock Chippers, and Wood Carvers. Diana Dixon Davis showed the kids how to make necklaces while

Hanna Ahlstrom displayed the Veterans quilts and worked with the kids designing quilt squares. Janine Bergez manned the plant booth and Ms. Pena from Lawrence Middle School brought her Leadership Class to help wherever needed during the day. The San Fernando Historical Society also participated.



The Elders shared their beautiful Doctor's Buggy with us on display at the entrance where everyone could easily see it.



Jim Summers was on hand all day long helping wherever needed.

The van der Valks and my son-in-law, Gary Bercow manned the food booth cooking hot dogs.

The museum was spectacular with our new Iverson Ranch display featuring photos from Jerry England's collection of movie photos and information regarding the movie ranch. Both Jerry England and Carla Iverson were on hand to share stories about the movie ranch throughout the day. Virginia Watson and Connie Ager were on hand to assist them.

At the end of the day, take down went so smoothly. Besides all of us, Dan Huffman and his boys, Eric Pampalona and Marie Patterson, Tom Harrison, Tim van der Valk, all made a point of coming to pitch in and put everything away.

Bea Berman, Chairman

CHATSWORTH PAST & PRESENT

By Ann Vincent

December 2010

This issue of Chatsworth Past & Present features our own Chatsworth Historical Society and how it has evolved to become caretakers of the Hill-Palmer Historical Cottage, Gardens, and the Virginia Watson Chatsworth Museum, all located on what is called the Homestead Acre. The Acre is located at 10385 Shadow Oak Drive, at the west end of Devonshire within Chatsworth Park South.

It all started in 1963. In February of that year, the Pioneer Church was declared a Historical Monument by Los Angeles, based on paperwork submitted by Katherine Johnson, a member of one of Chatsworth's pioneer families. This step postponed the pending demolition and provided the time needed to create an organization that would be responsible for the Church.

As the story goes... on April 17, 1963, according to the minutes of the first meeting, Virginia Watson, Katherine and RL Johnson, Art Honey, Evie Bowers, Keith Watts, and Charles and Eileen Janess all gathered at Katherine Johnson's house. The Historical Society was established that evening as a community organization to save the church and eventually use a portion of it as a museum to contain historical memorabilia. Charles Janess was elected president, Arthur Honey as treasurer and Sheila Watts became secretary.

Saving the pioneer church was the first order of business. A few months later Lila Schepler stepped in as president replacing Charles Janess due to illness. She led the group through the challenges of finding a home for the church at Oakwood Memorial Park. Virginia had already begun collecting Chatsworth photos from pioneer families including the Williams family and Minnie Hill Palmer, storing items temporarily at her home and the Schepler's home as needed.

During this time, Virginia began to prepare slide presentations to give at Chatsworth Park Elementary school and wrote articles under the column "Out our Way" about Chatsworth and its history. Virginia was not the only one sharing Chatsworth History. Bill Schepler, who grew up as a boy in Chatsworth, created a slide show called "Grizzlies to Caterpillars" depicting the early Pioneer life and how it evolved into Caterpillar tractors bulldozing our area to make way for tract homes.

In January of 1965, the Church was moved from its site on Topanga Blvd to Oakwood Cemetery. The goal was to restore it to its original condition; however vandalism and the October 1967 fire scorching the building created additional problems. The Church sat on stilts,



Lila and Bill Schepler coordinated the moving of the Pioneer Church for the Chatsworth Historical Society.

boarded up, as more funds were raised for work to be done. They had managed to move the Church with donations of money and services for \$2,500, but by the time the restoration project was completed the total expenses were almost \$20,000.

At this point, the organization focused on raising funds to restore the church. They held garage sales and bake sales...anything they could do and slowly reached their goal. During this time the Historical Society met at Chatsworth High School or at members' homes, and would occasionally have meetings or functions at the church.

Minnie Hill-Palmer was active in the community during this time.. She had sold off the farm land and retained a Life Tenancy agreement with the Department of Recreation and Parks for the 1911 cottage and 1 1/3 acre of land surrounding it. In 1970, the golf course that surrounded her property closed. The Pro Shop building was offered to Minnie and it was moved on to her property. In 1978, after Minnie had moved to a retirement home, the Historical Society, with Minnie's approval, worked out an agreement with the Department of Recreation and Parks and became the conservator of the property. The Golf Pro Shop building eventually became the Chatsworth Museum.



Later in 1979 the Hill Palmer House was added to the National Register of Historic Places. The docent program was created by Lila Schepler to help educate volunteers so that public tours could begin in 1980. Local schools continue to arrange for tours for their classrooms to hear about the local history and visit the museum and cottage.

In 1988 the museum and grounds were the focal point



Virginia Watson Chatsworth Museum sign with Historical Society Docents and Past Presidents, Lila Schepler, Virginia Watson and Lillian Schepler in 2007

of the Chatsworth Centennial event. In 1990, the society began hosting Pioneer Day, with the Garden Festival added in 1992. Bea Berman, Fundraising Chairman and Past President, has coordinated both fundraisers each year since they began.

Huell Howser visited Chatsworth and filmed the Homestead Acre in 2003 for his California Gold television series. He continues to show the footage each year to promote our events.

In 2007, the Chatsworth Museum was renamed the Virginia Watson Chatsworth Museum. Virginia continues to give tours sharing her knowledge of Chatsworth's history.

The Historical Society is still going strong after 47 years. It just held its 20th Annual Pioneer Day in October, and will host the Garden Festival on May 1, 2011. Our next open house for the cottage and museum will be the 1st Sunday in January.

It's your community and your history....Come Join Us.
Chatsworth Historical Society - December 2010

BABY BOOMER GAME

There are 17 questions. Average score is 10

MEMORY TEST! It's a Baby Boomer era test!

This one will be difficult for the younger set.

1. What builds strong bodies 12 ways?

- A. Flintstones vitamins
- B. The Buttmaster
- C. Spaghetti
- D. Wonder Bread
- E. Orange Juice
- F. Milk
- G. Cod Liver Oil

2. Before he was Muhammed Ali, he was....

- A. Sugar Ray Robinson.
- B. Roy Orbison..
- C. Gene Autry.
- D. Rudolph Valentino.
- E. Fabian.
- F. Mickey Mantle.
- G. Cassius Clay.

3. Pogo, the comic strip character said, 'We have met the enemy and....

- A. It's you.
- B. He is us.
- C. It's the Grinch.
- D. He wasn't home.
- E. He's really me and you.
- F. We quit.
- G. He surrendered.

4. Good night, David.

- A.. Good night, Chet
- B. Sleep well.
- C. Good night, Irene.
- D.. Good night, Gracie.
- E. See you later, alligator.
- F. Until tomorrow.
- G. Good night, Steve..

5. You'll wonder where the yellow went...

- A. When you use Tide
- B. When you lose your crayons.
- C. When you clean your tub.
- D. If you paint the room blue.
- E. If you buy a soft water tank.
- F. When you use Lady Clairol.
- G. When you brush your teeth with Pepsodent.

6. Before he was the Skipper's Little Buddy, Bob Denver was Dobie's friend...

- A. Stuart Whitman.
- B. Randolph Scott.
- C. Steve Reeves..
- D. Maynard G. Krebs.
- E. Corky B. Dork.

- F. Dave the Whale.
- G. Zippy Zoo.

7. Liar, liar...

- A. You're a liar.
- B. Your nose is growing.
- C. Pants on fire.
- D. Join the choir
- E. Jump up higher.
- F. On the wire.
- G. I'm telling Mom.

8. Meanwhile, back in Metropolis, Superman fights a never ending battle for truth, justice and.....

- A. Wheaties.
- B. Lois Lane .
- C. TV ratings.
- D. World peace.
- E. Red tights.
- F. The American way.
- G. News headlines.

9. Hey kids! What time is it?

- A. It's time for Yogi Bear.
- B It's time to do your homework.
- C. It's Howdy Doody Time.
- D. It's time for Romper Room.
- E. It's bedtime.
- F... The Mighty Mouse Hour..
- G. Scoopy Doo Time..

10. Lions and tigers and bears....

- A. Yikes.
- B. Oh, no..
- C. Gee whiz.
- D. I'm scared...
- E. Oh my.
- F.. Help! Help!
- G. Let's run.

11. Bob Dylan advised us never to trust anyone....

- A. Over 40.
- B. Wearing a uniform.
- C.. Carrying a briefcase.
- D. Over 30.
- E. You don't know.
- F. Who says, 'Trust me'..
- G. Who eats tofu.

12. NFL quarterback who appeared in a television commercial wearing women's stockings...

- A. Troy Aikman
- B. Kenny Stabler
- C. Joe Namath
- D. Roger Staubach
- E. Joe Montana
- F. Steve Young
- G. John Elway

13. Brylcreem...

- A. Smear it on.
- B. You'll smell great.
- C. Tame that cowlick.
- D. Grease ball heaven.
- E. It's a dream.
- F. We're your team.
- G. A littl e dab'll do ya.

14. I found my thrill...

- A. In Blueberry muffins.
- B. With my man, Bill.
- C. Down at the mill.
- D. Over the windowsill.
- E. With thyme and dill.
- F. Too late to enjoy.
- G. On Blueberry Hill.

15.. Before Robin Williams, Peter Pan was played by...

- A. Clark Gable.
- B. Mary Martin.
- C. Doris Day.
- D. Errol Flynn.
- E. Sally Fields.
- F. Jim Carrey.
- G. Jay Leno.

16. Name the Beatles...

- A. John, Steve, George, Ringo
- B. John, Paul, George, Roscoe
- C. John, Paul, Stacey, Ringo
- D. Jay, Paul, George, Ringo
- E. Lewis, Peter, George, Ringo
- F. Jason, Betty, Skipper, Hazel
- G. John, Paul, George, Ringo

17. I wonder, wonder, who.

- A. Who ate the leftovers?
- B. Who did the laundry?
- C. Was it you?
- D. Who wrote the book of love?
- E. Who I am?
- F. Passed the test?
- G. Knocked on the door?

REMEMBERING:

By Evelyn Hutcheson

The following reminisce of days past, growing up in the Midwest, was sent from Chatsworth Historical Society Docent Evelyn Hutcheson.

As teenagers we walked to the frozen river to ice skate in the winter then came back to our church where our mothers had hot cocoa and chili ready for us to eat.

In summer when I was younger, the eight of us on my block always played games in the street right in front of Grandma's house. Kick the can, run sheep run, hide and seek and all those fun games. Why it was at Grandma's house I don't know except it was in the middle of the block and no traffic during the day time. I didn't live with my Grandparents until I was 7, but then I had so many friends my age. That was something I never had in Waukegan, Illinois. There were no children close by to play with until I reached kindergarten and first grade. So now at age 7, I learned to roller skate and play with girl friends at their houses. Grandpa made a playhouse just for us girls. My sister being six years younger was in a different play group as she grew up.

I got a new sled and we kids of the block went to the school yard across the alley to slide down the hill in the snow.

I remember that my mother, while cooking would help with the multiplication tables.

These were good years to remember!

Evelyn

Wondering if your Dues are Due?

There is a code on the last line of your address label (if you are a life member, there is no code).

- The first digit represents membership type, 1 – individual, and 2 – family/organization.
- The next two digits represent the month that you last paid your dues.
- The last two digits represent the year that you last paid your dues.
- If the month and year on your address label is over one year old, then your dues are due!

Please use the form below to renew your Membership. And if your neighbor is not a member yet, pass this newsletter on to them and invite them to join...

If you have a favorite short story or memory, we would love to hear it. Please send it in.

Email: AnnVincent@aol.com

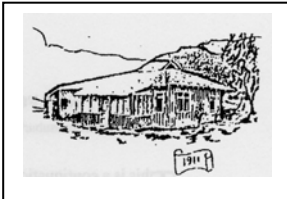
Below are the right answers to the Quiz:

1. D - Wonder Bread;
2. G - Cassius Clay;
3. B - He Is us;
4. A - Good night, Chet;
5. G - When you brush your teeth with Pepsodent;
6. D - Maynard G. Krebs;
7. C - Pants on fire
8. F - The American Way;
9. C - It's Howdy Doody Time;
10. E - Oh my ;
11. D - Over 30;
12. C - Joe Namath;
13. G - A little dab'll do ya;
14. G - On Blueberry Hill
15. B - Mary Martin;
16. G - John, Paul, George, Ringo
17. D - Who wrote the book of Love



CHATSWORTH HISTORICAL SOCIETY

Membership Form



Your membership helps support our Homestead Acre and the educational and historical programs we provide for our community. Members receive our quarterly newsletters, and receive invitation reminders regarding our monthly programs and annual events – Rose Pruning, the Garden Festival, Membership Roundup, and Pioneer Day. Please mail this form with your annual membership dues and/or contribution made payable to:

Chatsworth Historical Society, 10385 Shadow Oak Drive, Chatsworth, CA 91311
818-882-5614 www.historicalsocieties.net

- | | | | |
|-------------------------|---|---|---|
| Yearly: | <input type="checkbox"/> New Member | <input type="checkbox"/> Renewal | |
| Life Membership: | <input type="checkbox"/> Individual \$15.00 | <input type="checkbox"/> Family \$20.00 | <input type="checkbox"/> Organization \$20.00 |
| | <input type="checkbox"/> \$ 125.00 | | |

NAME _____ Phone: _____

STREET ADDRESS: _____ Email: _____

CITY / STATE / ZIP: _____

Special Interest / Expertise: _____

It's Your Community...It's Your History

The Chatsworth Historical Society would like to have you join us in preserving Chatsworth's past. If you have any old Chatsworth publications, like the Grapevine, or have old photos of the area, the Chatsworth baseball field, any of the schools, or churches here in the area, we would love to have copies of your photos, but we would also like to hear your stories about growing up in Chatsworth or what brought you to Chatsworth and why you stayed here.

We are trying to document some of the established businesses that have been part of the community, so if you have photos showing those businesses...or history on them....please share. Time creeps up on us and anything more than 30 years ago is suddenly history. This is the information we still remember, but our children won't, unless we make the effort to preserve it.

Chatsworth Historical Society Presidents		
		Terms
Charles Janess	1963-64	1
Lila Schepler	1964-65, 72-74, 75-76, 86-87	5
Ebert Chatham	1965-66	1
Garvin Aulepp	1966-68	2
Lillian Schepler	1968-70, 76-78	4
Virginia Watson	1970-72, 78-79, 87-88, 96-97	5
Dr. Ruth Boak	1974-75	1
Jane Matthews	1979-80, 88-89	2
Sheila Watts	1980-82, 90-91, 94-96	5
Iolene Cleveland	1982-1986	4
Zena Thorpe	1991-93	2
Bea Berman	1993-94	1
John Thorpe	1997-2000	3
Linda & Andre van der Valk	2000-present	11

Have a Merry Christmas and Happy New Year.

Chatsworth Historical Society

10385 Shadow Oak Drive
Chatsworth, Ca 91311

RETURN SERVICE REQUESTED

Check the code below your mailing label ...is it time to pay your dues? (See page 5 for details)