

Smoke Signal

CHATSWORTH HISTORICAL SOCIETY
10385 Shadow Oak Drive, Chatsworth, CA 91311
(818) 882-5614
www.historicalsocieties.net



September 2009, Issue #4

Co-Presidents: André & Linda van der Valk

Editor: Ann Vincent

Co-Presidents' Message

By Linda & André van der Valk

I can't believe that October is right around the corner. That means Pioneer Day is upon us. Busy Bea has been getting ready for months. I am thankful every year that Bea is still our event chair. I hope that the weather cooperates and we all have a great day.

We had a great time at our Membership Round Up. The food was great and so was the entertainment. Thanks to everyone who came and either joined, renewed their memberships or made donations.

The Santa Susana Mountain Park Association is negotiating with State Parks to run a volunteer program so that the Santa Susana Pass State Historic Park can stay open during the budget crisis. They are looking for volunteers and we will be having a training session at the Acre. If you are interested you can call the acre and leave a message, and we will have someone get back to you.

Remember Pioneer Day is October 4th. We will once again have a shuttle at the train depot to bring you to the acre. I encourage you to take it because it leaves you off at the gate and picks you up there for your return trip. See you at Pioneer Day.

Linda and André



Donna Afflerbach is shown here with a full days wash at the 1995 Pioneer Day

Check out our Pioneer Display at the Chatsworth Public Library. This and many other photos are on display to show how we teach kids about our pioneer families at the annual Pioneer Day sponsored by the Chatsworth Historical Society.

Chatsworth Historical Society
Board of Directors 2009-2010

Co-Presidents	Linda & André van der Valk
Programs, Ways & Means.....	Bea Berman
Membership.....	Keith Watts
Treasurer.....	Ray Vincent
Recording Secretary.....	Elaine Campbell
Smoke Signal.....	Ann Vincent
Museum Curator.....	Virginia Watson
Cottage Curator.....	Betty Summers
Hospitality.....	Jelena Csanyi
Garden Director.....	Jim & Betty Summers
Director-at-Large.....	Beverly King
Director-at-Large.....	Evelyn Hutcheson
Permanent Member.....	Lila Schepler

Upcoming Events at the HOMESTEAD ACRE

PIONEER DAY – October 4

Mark you calendar – we look forward to seeing you there. Invite your neighbors to join us. See the flyer attached on page 4.

General Meeting – October 20th 7:00 pm

TV MEMORIES... Join us for a fun review of the early 1949-1960 Television shows that we all grew up on. There was a transition from vaudeville, movies and radio to this new media. How old were you during this time? What shows were you watching? Were they filmed in Chatsworth? What kind of TV did you have? Come join us for an entertaining review of our favorite shows.

Docent Workshops

Workshops meet every Wednesday, 9:00am to noon under the direction of Virginia Watson. Docents are trained to provide tours and assist with projects related to the museum and gardens. Contact Virginia Watson at 818 341-3053 for additional information.

Museum & Grounds Open House

The Homestead Acre continues to be open to the public the first Sunday of each month from 1 to 4 pm. This month happens to coincide with Pioneer Day.

PIONEER DAY at the ACRE

Summer is over and it's time for our annual PIONEER DAY, SUNDAY, OCTOBER 4th at the HOMESTEAD ACRE. The event hours are from 11:00am to 4:00pm. As usual we will have our gold panning, blacksmith, spinning and weaving, railroad ties, Veterans quilt display, chores and games of yore and of course, our mini Chili Cook-off. We will also have our fabulous bake sale, white elephant booth and plant sale. There will be lots to do for everyone with our woodcarvers, rock chippers, and origami activities. We will also have vendors displaying their arts and crafts.

Throughout the day there will be some special activities:

The Hill-Palmer Cottage will be open for tours between 12:00 noon to 3:00pm.

The bluegrass band "Sometimes in Tune" will be performing from 1:00pm to 3:00pm so come enjoy some old-time fiddling.

Please tell your friends to come out and enjoy the day. We will have a shuttle bus from the train depot starting at 11:00 am coming every 15 minutes. Due to the park closure, parking is really limited.

REMINDER: Help is always needed.

If anyone is interested in baking or donating new or like-new items to our white elephant booth your donations are appreciated. If you or someone you know is motivated to compete in our Chili Cook-off, please have them contact me at (818) 341-5449.

Set-up help is needed on Saturday morning from 9-12, and also clean-up after the event.

Please plan to support the activity. This is one of our two fund-raisers for the year to help us defray the cost of upkeep for the acre.

Looking forward to seeing you all on October 4th.

Bea Berman - Chairman

Docent Update:

The docents have been working throughout the summer to continue the preservation of the items we have collected for our museum. Activities include cataloging newsletters, digitizing photos and slides for safekeeping and working in the gardens. A new display for Pioneer Day will be available to see in the museum, so be sure to stop by and check it out. In addition, there is a Pioneer Day display available to see at the Chatsworth Public Library display case. If you have any photos/history that we could include in our collection, please contact Virginia or leave a message at the office phone. (818) 882-5614 or email Chatsacre1@aol.com

QUIZ from previous issue

The February 2009 issue included a set of questions and promised the answers in a future publication, so here are the questions and answers revisited.

1. How many sides does a stop sign have?
2. Do books have even-numbered pages on the right or left?
3. How many lug nuts are on a standard car wheel?
4. How many sides are there on a standard pencil?
5. Sleepy, Happy, Sneezzy, Grumpy, Dopey, Doc. Who is missing?
6. How many hot dogs are in a standard package?
7. On which playing card is the card maker's trademark?
8. On the back of a \$1 bill, what is in the center?
9. How many curves are there on the standard paper clip?
10. Does a merry-go-round turn counter or clockwise?

Answers: 1.eight; 2. left; 3. six; 4. six; 5. Bashful; 6. eight; 7. Joker; 8. "In God We Trust"; 9. three; 10. clockwise

SHARED MEMORIES

Last issue I suggested that people contribute by writing a short story about something you recall in your childhood. Elaine has shared this one with us.

MEMORIES OF MY MOTHERS KITCHEN

By Elaine Campbell

I wish that I could smell the sweet aroma of my Mothers kitchen just once more. Those childhood memories linger on - even though 75 plus years have gone by. My Mother was the world's best baker, or at least I thought so. She baked beautiful rounded loaves of crusty bread, sweet rolls, and the very best cookies, especially my favorite sugar cookies with frosting. She was a farmer's wife, so we had big beef and pork roasts, lots of fried chicken, from which I had to help remove the feathers. We cured our own hams and smoked our own bacon and to this day nothing tastes as good. She cooked for hired men and thrashers at harvest time - on a wood burning stove - without the aid of electric mixers, microwaves etc. Makes me realize how much I have to be thankful for - but most of all, that wonderful Mother who took such good care of all of us.

CHATSWORTH PAST & PRESENT

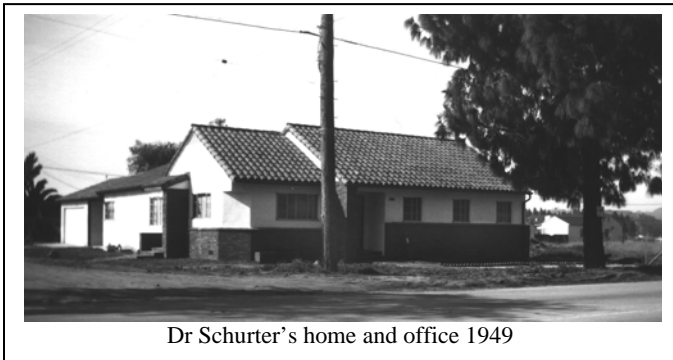
By Ann Vincent

September 2009



This issue of Chatsworth Past & Present features the landmark building and office of Dr.

Barbara Pampalone at 21800 Devonshire Street. Since the building has been remodeled several times to house each of the various businesses, the building itself is not classified as historic, but the exterior has been maintained in a style similar to the original structure. This Professional building has been the offices of several of our local Dentists over the years.



Dr Schurter's home and office 1949

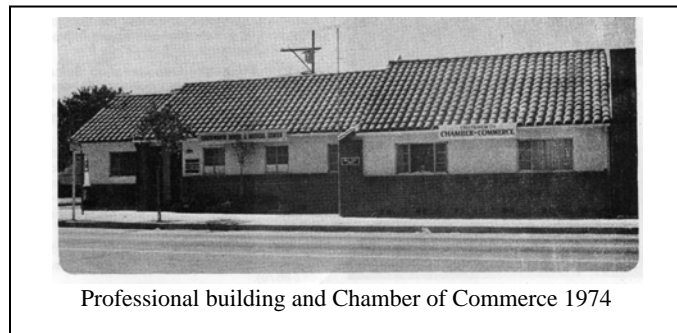
In 1949, Dr. Joe Schurter moved his dental practice from the office building on the corner of Topanga and Devonshire to this new building that he built at 21800 Devonshire. The building located on the south west corner of Jordan and Devonshire has remained a dental office ever since. Since they lived in the building, Dr. Schurter's wife Rose was available if he needed a dental assistant. By using a buzzer they had installed in their kitchen to let her know when to come to the office, she was on call when needed.

In approximately 1960, Dr. Schurter decided to specialize and become an orthodontist. There was not a large enough population in Chatsworth to support an orthodontist, so he built another building in Reseda and opened a new practice. They moved to a home on Chatsworth Street and began renting out the Devonshire building to other dentists, including Dr. Hocker, and Dr. Kinsman who later built another Spanish style building on Canoga. Dr. Blier also rented for a while and also moved on to build his own new building

Barbara and Joe Pampalone rented the building from Dr. Joe Schurter, on August 1, 1967, the day Barbara's Dental License became active. As a new USC Dental School graduate, she opened up her door and started her new practice from scratch. The Pampalones rented two sections of the building for the dental office and a dental laboratory. Joe, a dentist by trade from France, ran a dental laboratory that he moved to this building from across the street. The Pampalone's BioCeramic Laboratory was one of the largest commercial dental porcelain laboratories in the San

Fernando Valley. The ability to have rapid dental or partial repairs, as well as the customization of dental care, was important for a dental office. The BioCeramic Dental Lab was one of the first all porcelain-fused-to-gold laboratories in 1965.

In 1969, Dr. Schurter eventually convinced Barbara and Joe to purchase the building from him. They then redesigned the interior of the building for more efficient use.



Professional building and Chamber of Commerce 1974

In 1972 the Chamber of Commerce became a tenant in the front part of the building. Dr. Joe Pampalone was an active member of the Chamber of Commerce, and they rented that section to the Chamber for \$1 per year. Charles Janess, a long time resident of Chatsworth, was an active member of the Chamber of Commerce at that time. Bea and Marshall Berman also rented an office from the Pampalones when Marshall first brought his CPA business to Chatsworth.

Over the years, Dr. Barbara shared her offices with several dentists. Dr. Donna Bighart Hurowitz, a fellow USC graduate, started in the office shortly after Barbara opened, sharing space and alternating days with Dr. Barbara. Donna would assist the Schurters with their dental work for the Rancho San Antonio's Boys Home and continued to practice there until 1977. Barbara also shared office space with other dentists over the years that included Dr. Schindler, Dr. Martin, Dr. Marina Pampalone, (Barbara and Joe's daughter), Dr. Popkoff and Dr Sharhiar Parvizpova.

Since 2007, with some remodeling, the building is now shared with NAYA Fresh Body Spa, a business owned and operated by Marie Patterson & Erik Pampalone.

Barbara continues to practice Dentistry and has been working there 42 of the 60 years since the building was constructed.



2009

Annual Pioneer Day

Sunday, Oct. 4, 2009

11 a.m. to 4 p.m.

***Old-time fun
for everyone!***

- CHILI COOK-OFF
 - Bake sale
- Woodcarvers 
- Entertainment
 - Panning for gold
- Spinning and weaving
- Veteran quilt display
- Kids designing quilt squares
- Rock chippers
- Blacksmith
 - Indian artifacts
- "Chores and Games of yore"
and lots more!



Location:

Homestead Acre,
Chatsworth Park South
(West end of Devonshire St.)
10385 Shadow Oak Drive, Chatsworth, CA

Information:

(818) 882-5614

www.historicalsocieties.net

Donations:

Adults: \$4

Children: \$1

(Free for kids under 5)

**Presented by the
Chatsworth Historical Society**

Park your car at the Chatsworth Train Depot (10038 Old Depot Plaza Road)
and use our free shuttle service, every 15 minutes from 11 a.m. To 4 p.m.

Smoke Signal Issues

We recently went through and organized all the previous issues of the Smoke Signal only to find that we are short a few copies for our records. In previous years, we issued Smoke signals monthly but in more current years they are issued on a quarterly basis. We are looking for any copies that might be out there you could share if you have kept them.

These are the missing issues:

1970: January, March, May and October
1971: January, February, March and April
1972: January, February, March, April, October, November, and December
1976: April, October
1977: October
1979: June
1984: September
1990: January, September
1991: February, March, October, and December
1992: May, October, and December
1996: January, March, April, October, November, and December

To make cataloging our newsletters easier in the future an issue number will be added per year. The rest of the

time, postcards will be sent out as reminders for general meeting activities.

Elaine Campbell has taken on this project locating and archiving all of our Smoke Signals and they are now in notebooks easily available to review.

Wondering if your Dues are Due?

There is a code on the last line of your address label (if you are a life member, there is no code).

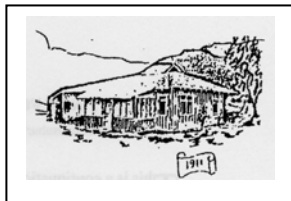
- The first digit represents membership type, 1 – individual, and 2 – family/organization.
- The next two digits represent the month that you last paid your dues.
- The last two digits represent the year that you last paid your dues.
- If the month and year on your address label is over one year old, then your dues are due!

Please use the form below to renew your Membership. And if your neighbor is not a member yet, pass this newsletter on to them and invite them to join....



CHATSWORTH HISTORICAL SOCIETY

Membership Form



Your membership helps support our Homestead Acre and the educational and historical programs we provide for our community. Members receive our quarterly newsletters, and receive invitation reminders regarding our monthly programs and annual events -- the Garden Festival, Membership Roundup, and Pioneer Day. Please mail this form with your annual membership dues and/or contribution made payable to:

Chatsworth Historical Society, 10385 Shadow Oak Drive, Chatsworth, CA 91311
818-882-5614 www.historicalsocieties.net

Yearly: New Member Renewal
Life Membership: Individual \$15.00 Family \$20.00 Organization \$100.00
 \$ 125.00

NAME _____ Phone: _____

STREET ADDRESS: _____ Email: _____

CITY / STATE / ZIP: _____

Special Interest / Expertise: _____

ADVERTISEMENT From 1950's Chatsworth Chamber of Commerce Booklet

Specify
LAURELWOOD ACRES

PUREBRED BREEDING STOCK
Alpines Nubians Saanens Toggenburgs
Official Production Records Available at All Times

Specify
LAURELWOOD ACRES



For People Who Require The Best

Distributed Throughout Los Angeles and Ventura Counties
9325 Topanga Canyon Blvd., Chatsworth, California
Diamond 8-1944

Due to milk allergies, Betty Nordfelt's newborn daughter, Pinky, needed goat milk to survive. Fresh goat's milk was hard to come by because of the timing of the birth of newborn kids (only in the Spring). Getting goat milk in the winter was nearly impossible. So Betty began raising goats and choosing to breed extensively those goats that bore their kids in the winter time, as well as the spring, so that there would be year-round goat milk available.

By 1956, Laurelwood Acres was the largest goat dairy in California and maybe the U.S. It was located on the West side of Topanga Canyon Blvd. south of Plummer. Sometime around 1970, Betty and Wes Nordfelt moved to Tulare, California and continued the dairy at that location.

Not to be confused with Peterson's Dairy which was on Plummer west of Topanga, which had a small store with a drive-through entrance where you could ask for milk or butter or eggs.

Chatsworth Historical Society

10385 Shadow Oak Drive
Chatsworth, Ca 91311

Check the code below your mailing label ...is it time to pay your dues? (See page 5)