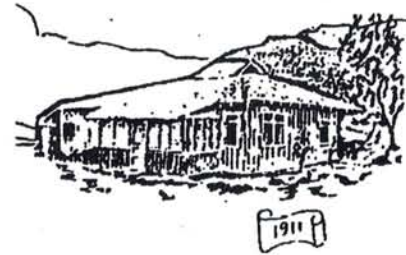


Smoke Signal



CHATSWORTH HISTORICAL SOCIETY
10385 Shadow Oak Drive, Chatsworth, CA 91311
(818)-882-5614 www.historicalsocieties.net

Co-Presidents: Andre & Linda van der Valk

Editor : Keith Watts

APRIL, 2007

DOCENTS GO SIGHTSEEING

Our docents took a day off from working last Wednesday, and Virginia Watson reported that they went on a hike up to the "Garden of the Gods," the historic area above old Santa Susana Pass Road, where many of the old Western films were made.

They all had to climb up the hill to where the tracks that guided the movie cameras still remain. Virginia reports that *"The climb would have been a lot easier had we all been a lot younger. But it was fun! And we all made it successfully. We all enjoyed the beautiful view and reminisced about the western movies that had been made using the very scenery that we were enjoying."*

The docents are hoping to make more such trips to enhance their knowledge of local history and be able to give a more accurate view of our area.

Chatsworth Historical Society
Board of Directors 2005-2007

Co-Presidents.....Linda & Andre van der Valk 882-3661
Programs, Ways & Means.....Bea Berman 341-5449
Membership.....Keith Watts 341-4489
Treasurer.....Lillian Schepler 341-2697
Rec. Secretary.....Elaine Campbell 341-4954
Smoke Signal.....Keith Watts 341-4489
Museum Curator.....Virginia Watson 341-3053
Cottage Curator.....Betty Summers 341-2714
Hospitality.....Committee
Garden Directors.....Jim & Betty Summers 341-2714
Director-at-Large.....Ruth Grant 882-3992
Permanent Member.....Lila Schepler 341 3447

APRIL PROGRAM ANNOUNCEMENT

Tuesday, April 17

7:00 p.m.

CHS Homestead Acre Museum

The speaker for the April Program Meeting will be Fred Samuel, who is employed at the Santa Ynez Valley Historical Society Museum and Carriage House, and will describe that large museum and share some of his experiences.

Samuel is a native of Chatsworth and grew up in the local community. He is the son of Bea and Grant Samuel, long-time members of the Chatsworth Historical Society.

Bea Berman, Program Chair, reports that the speaker for last month's program was very vivacious and everyone enjoyed hearing about protecting California mountain lions and other wildlife.

GARDEN FESTIVAL UPDATE

.....Bea Berman, Chairman

It's almost countdown to our Garden Festival, Sunday, April 29th at the Homestead Acre from 11:00- 4:00 p.m. Don't forget to tell your friends. Remember, this is one of our two fund

raisers for the year. Again, we will have our wonderful High Tea, as well as entertainment from the Chatsworth Dance Centre, Bake Sale, White Elephant Sale, Plant Sale and Susan Rios will be signing her paintings from 12:00 - 2:00 p.m. We will also have the wonderful Veterans Quilt Display as well as all the Garden Clubs.

We can always use baked goods and new or like new items for our White Elephant booth. (Refer to the attached flyer for more details.)

PAINT EFFECTS

The cottage really looks at it's best because of the great paint job applied by Select Painting, as well as the new screens provided by the City.

But we all know that the major cost and extensive effort of the renovation was in the removal of the underlying coats of lead-based paint that were applied in the past. Lead is toxic to humans and animals, and we are now more aware of its long-term effects and are willing to pay the relatively high cost for removal of lead from our materials and the atmosphere.

FROM OUR CO-PRESIDENTS

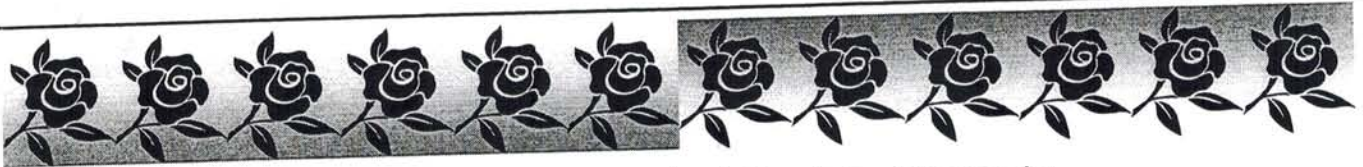
Spring is here and The Acre looks great. Everything is coming along for The Garden Festival. We are proud that this year the Cottage will have its best foot forward. The new paint job and the screens make it look better than ever. The museum is looking great with the new cases and all the displays.

We are fortunate to have many new members that are helping us to get ready for The Garden Festival and just helping us with weekly chores. Hope to see everyone at The Garden Festival. Remember that it is one of our two yearly fundraisers. It takes approximately \$12,000 a year to maintain the Acre. Sometimes we also have some unexpected expenses - which requires even more funds.

For the Garden Festival we will again have a shuttle bus, thanks to Councilman Greig Smith, going from the Train Depot to the Acre. The shuttle will run from 11:00 a.m., with the last trip leaving the Acre at 3:45 p.m. The shuttles are scheduled to run every fifteen minutes and will leave you right at the gate and pick you up right at the gate.

Thank you for your continued support and see you on April 29th.

Linda and Andre



Chatsworth Historical Society Presents

A GARDEN FESTIVAL

Featuring Roses and Crafts!

- ◆ The Duchess Tea Room Afternoon Tea, \$7 (11:30 a.m. – 2 p.m.)
- ◆ Polynesian Dance Revue, Chatsworth Dance Centre (2 p.m.)
- ◆ Blooming Rose Gardens
- ◆ Museum Exhibits
- ◆ Live Plant Sale
- ◆ Tours of Minnie's Cottage
- ◆ Arts and Crafts
- ◆ Garden Clubs
- ◆ White Elephant Sale
- ◆ Bake Sale
- ◆ Susan Rios Paintings With a Special Signing By Susan (12 – 2 p.m.)
- ◆ Quilt Display From the Veterans Quilt Project

Sunday, April 29, 2007
11 a.m. to 4 p.m.

\$4 Donation – Children Under 12 Free

The Homestead Acre

At the First Stop Sign in

Chatsworth Park South

(West End of Devonshire Street)

Information: 818-882-5614



Park your car at the Chatsworth Train Depot (10038 Old Depot Plaza Road) and use our free shuttle service, every 15 minutes from 11 a.m. to 4 p.m.