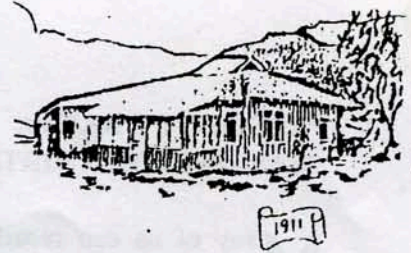


Smoke Signal



CHATSWORTH HISTORICAL SOCIETY
10385 Shadow Oak Drive, Chatsworth, CA 91311
(818)-882-5614 www.historicalsocieties.net

Co-Presidents: Andre & Linda van der Valk

Editor : Keith Watts

FEBRUARY, 2006

President's Day - February 2006

CO-PRESIDENTS' MESSAGE

The Acre has been a busy place in the last few weeks. Jim and Betty Summers have been working extremely hard in the gardens pruning roses, fertilizing and planting plants so the gardens will look great as always for The Garden Festival. I don't think everyone really appreciates the work that they do for us. Every morning they are out there working in the garden or Jim is doing handyman work around the acre. We had our pruning day and those that came worked hard, but we are still left with a lot of roses to be pruned and guess who will be doing it. If you love to work in the gardens, Jim and Betty would appreciate the help. For our pruning day Sierra Canyon School donated a dozen pair of gardening gloves. The gloves were appreciated by those who did not bring any with them that day and will be put to good use

in the future. Thank you Sierra Canyon School.

We have excitement going on in the museum. The Chatsworth Neighborhood Council has voted to buy the Historical Society new cases for the inside of the museum. Thanks to Bill Hughes and his committee we were offered the opportunity to receive these funds. We will be ordering the cases in the up-coming week. We are ordering ten new cases with lighting. If you have any suggestions for the old cases please let us know.

Since we are getting new cases we are going to get some estimates on recarpeting the museum. The timing would be perfect while the cases are being switched. The board has approved the expenditure and we hopefully will have everything ready for The Garden Festival. Remember the word hopefully, if not there is always Pioneer Day. Thank you to Bill Hughes and The Chatsworth Neighborhood Council.

Chatsworth Historical Society
Board of Directors 2004-2005

Co-Presidents.....	Linda & Andre van der Valk	882-3661
Programs, Ways & Means.....	Bea Berman	341-5449
Membership.....	Keith Watts	341-4489
Treasurer.....	Lillian Schepler	341-2697
Rec. Secretary.....	Elaine Campbell	341-4954
Smoke Signal.....	Keith Watts	341-4489
Museum Curator.....	Virginia Watson	341-3053
Cottage Curator.....	Betty Summers	341-2714
Hospitality.....	Committee	
Garden Director.....	Jim & Betty Summers	341-2714
Director-at-Large.....	Ruth Grant	882-3992
Director-at-Large.....	Dianne Kartiala	886-5210 (Bus.)
Permanent Member.....	Lila Schepler	341-3447

And speaking about The Garden Festival on April 30th, our busy Bea Berman is already sending out letters and organizing the day. I am sure she has already put her order in for great weather for that day. Also thanks to Virginia Watson for planning a great trip to Ahmanson Ranch (Upper Las Virgenes Park). We had an interesting time going up there and then a great lunch at The Sagebrush Cantina. Bea is already busy planning another trip for March to the Oil Museum in Santa Paula.

Linda and Andre

PRESIDENT'S DAY vs. WASHINGTON'S BIRTHDAY

Many of us can recall when Washington's (Feb. 22) and Lincoln's (Feb. 12) birthdays were celebrated with holidays, school programs and speeches, etc. But gradually that was replaced by an entity called President's Day.

President's Day is an annual holiday observed in the U.S. in February, with the intention of honoring our president's, especially George Washington and Abraham Lincoln, both born in February. But did you know that **President's Day is not a federal holiday?**

Commemoration of Washington's birthday had become an American tradition and national holiday since the last days of his presidency and featured receptions, speeches, and general revelry. Later, Lincoln's birthday was also honored with formal observances and legal holidays in several states, but did not become a federal holiday.

Congressional legislation in 1968 (HR 15951) affected Washington's Birthday, along with other federal holidays. Official observation of Washington's was shifted to the third Monday in February, whether or not it falls on the 22nd. Although still officially known as Washington's Birthday, it has become popularly known and recognized by some states, as "President's Day", a "day for honoring both Washington and Lincoln, as well as all the other men who have served as president."

Sources: World Book Online Reference Center.
patriotism.org/presidents_day/

TREE PLANTINGS....Virginia Watson

On Wednesday, February 1st the Cherry Blossom Garden Club members were the guests of the CHS for a meeting and tree planting. Eleanor Dobbins, president of the Club, arranged for the event held in the Museum. Members arrived about quarter to 10 a.m., joining the docents of CHS who meet every Wednesday to work. The regular meeting of the garden club was held followed by Virginia Watson who showed historic slides and told the history of the community. Garden Club members brought lunch and the CHS

provided coffee etc. The food was delicious and everyone enjoyed the event. While the room was being set up with tables for the lunch, members toured the cottage led by Beverly King, docent. After the tour everyone gathered around the hole prepared for the Loquat Tree by Jim Summers and a tree was planted with pictures taken. Actually the tree was a branch. Green Thumb Nursery who had ordered the tree for the Garden Club had not received the shipment promised so those present did the next best thing and planted the temporary branch. When the whole tree is presented, Jim Summers and Betty will clean out the hole and plant the permanent Loquat Tree.

For those of you who are wondering why we recently chose a Cumquat Tree for the Native Daughters to give us and a Loquat Tree for the Cherry Blossom Garden Club to give us, it is because of Minnie Hill Palmer. When we first became conservators of The Homestead Acre in 1979 there was both a Cumquat and a Loquat Tree in the area behind the museum and before the big Black Walnut. Those two trees were the first to die and many CHS members felt we should try to keep as many of the original trees as possible and to replace those with like when we weren't able to save them. We do have one problem--when you lose a tree you can't immediately put a new one in its exact place so you have to find a new place to plant it. Minnie Palmer was a member of the Cherry Blossom Garden Club and one of the members at the luncheon said Minnie was one of the charter members of the group when it was organized.

TRAIN WHISTLE SIGNALS

Ann Vincent obtained (from a docent) the following translation of the train signals that we've all wondered about as a train rumbles through Chatsworth:

----- Long whistle
o Short whistle

-----o Train is approaching
o o Train is backing up
o o o o Call for Signal (Continued)

- o o o Flagman Protect Train Rear
 - o o o ---- Flagman Protect Train Front
 - o ---- Brakes Sticking
 - Station Approach
 - o o Train is Moving or Signal Received
 - o Stop
 - o ---- ---- ---- Flagman Return to Train
 - ---- Train Has Departed
-

GONE BUT NOT FORGOTTEN in the Valley
 (From Americansuburbs.com)

This is our last installment of the Gone But Not Forgotten. I hope you have enjoyed it.....Linda

VILLA CABRINI

School for girls named for Mother Cabrini, the saint of immigrants who worked and lived on the land in the early 1900s, was on Glenoaks Blvd. on the border between Burbank and Sun Valley. After the school closed in 1970 the site was a temporary campus of the California Institute of the Arts and now houses Woodbury University .

JOSEF VON STERNBERG HOME

Designed in 1935, the house at 1000 Tampa Avenue was considered one of the finest works of the modernist architect Richard Neutra. The home, built for film director Josef von Sternberg was constructed of glass and steel and included a moat. It was later lived in by the writer Ayn Rand. The home was torn down in 1972.

SFV WALNUT GROWERS WAREHOUSE

The home of the Valley's walnut industry from 1930 into the postwar era was at 18160 Parthenia Street, currently a truck rental concern.

WARNER BROS. MOVIE RANCH

Warner Brothers began buying up land in the Calabasas area in 1936 and amassed 2,800 acres. This was the studio's location ranch where films such as National Velvet were shot. The studio sold the land in 1959, and part of it became the Warner Center area of Woodland Hills.

WEEKS COLONY

Poultry-raising colony founded in 1922 by Charles Weeks

is no longer around, but its resident established the community of Winnetka, between Reseda and Canoga Park.

WHITE FRONT STORES

They had a little of everything. Three in the valley were at Sherman Way and Woodley, on Roscoe Blvd. near Canoga, and at the corner of Osborne and Laurel Canyon in Pacoima.

WHITLEY MANSION

The former home of Hobart J. Whitley, one of the founders of Van Nuys, and later occupied by the Praisewater Funeral Home, was at 5849 Van Nuys Blvd.

ZELZAH PASSENGER DEPOT

The Southern Pacific station for Zelzah, later North Los Angeles and later still Northridge, was along the tracks at the Southeast corner of Parthenia St. and Reseda Blvd. It was razed in 1961.

ZULU HUT

Sometimes called Zululand this open-air stand with an African jungle theme advertised as "half mile beyond Universal City on Ventura Blvd." Proprietor Raymond McKee dubbed himself the Zulu Chief and waiters in blackface served squab and fried chicken under rustling palms. Open until 2 a.m., the Zulu Hut was a roadhouse sensation in the 1920s.

This quote was found at the starting of the Gone But Not Forgotten section of the AmericasSuburb.com: *"I grew up in a place that has vanished, in a world that can be recalled by only a very few."* Catherine Mulholland, Los Angeles Times Magazine

FUNDRAISER AT CHATSWORTH FLORIST

Rick and Jerry have made a wreath from broken ornaments to raffle off for the Chatsworth Historical Society. The wreath is beautiful and it also has lights. The tickets are \$5.00 each and the winning ticket will be drawn at our Garden Festival. Tickets are available at Chatsworth Florist and we will have some at the Acre.
