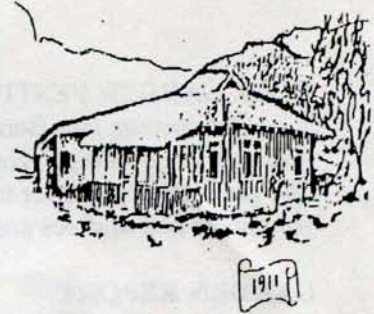


Smoke Signal



CHATSWORTH HISTORICAL SOCIETY
10385 Shadow Oak Drive, Chatsworth CA 91311
(818)-882-5614

President: John Thorpe

Editor: Barbara Pampalone

JANUARY, 1999

FROM THE PRES.

The board and I wish you a Happy New Year and thank you for your support this last year. Financially we are looking very good – plus the SBA loan is now paid off. Last year's Rose Festival and Pioneer Day were both well attended and were hugely successful; everyone had great days at the acre. These two events are our major fundraisers so it is gratifying when they are successful. This makes board work worthwhile.

John Thorpe, President

GENERAL MEMBERSHIP MEETING IS JANUARY 19 – 7:00 AT THE ACRE

SESIQUICENTENIAL QUILT

In the year 2000 California will celebrate its sesquicentennial. Sesqui- is a prefix meaning one and a half, a centennial marks years and so in 2000 California will be 150 years old. California was admitted to the Union in 1850. At that time the Union consisted of 30 states.

A quilt has been made to celebrate the California Sesquicentennial. It was co-designed by Ellen Heck and Zena Thorpe. At least 300 women from all over the state contributed to the making of the quilt but it was largely assembled here in Chatsworth. It is 10' x 10' pictorial history of California and was accepted on behalf of the state by Governor Wilson in January of last year at the Sesquicentennial kick-off event in Coloma.

Coloma was the site of the first discovery of gold which led to the Gold Rush and ultimately to the formation of the state. The quilt formed the back-drip at the inauguration luncheon for Governor Davis this month. We have been promised the quilt for display here in Chatsworth on March 10th, 11th & 12th of 2000 at our special sesquicentennial celebration event Watch for further details as 2000 draws nearer!

DOCENT TRAINING

January is docent-training month, with Lila and Virginia providing another excellent set of programs. They will meet with lucky class members from 9:30 to 12:00 each Saturday in January. Call Virginia or Lila if you wish to join the group.

CHS FLOAT WINS THIRD PLACE IN CHATSWORTH PARADE

The swing from the garden had become rotted and could no longer be left at the garden. It served one great last place in Chatsworth history as it traveled down Devonshire with Zena and Keith depicting turn-of-the-century "In the Garden" in the Chatsworth Parade, securing a third place ribbon for the Historical Society.

COPIES OF SELECTED NOTES OF JAN HINKSTON NOW AVAILABLE

The Santa Susana Mountain Park Association has compiled and duplicated about 100 pages of information from Jan's files about the origin of the SSMPA and its early life as well as notes on local history (Indian, Spanish, Mexican and American).

This nicely bound collection of notes and clippings is available from SSMPA for only \$10.00 with all proceeds going to SSMPA. Contact Susan Gerke at (818) 704-9304 to purchase this compendium of West Valley environmental history.

"WHITHER CALIFORNIANS AND THEIR WATER: ENVIRONMENTAL PROTECTION OR ENVIRONMENTAL DISASTER?"

CSUN Department of History is pleased to announce that Professor Morris Hundley, Jr.; Professor of History at the University of California, Los Angeles will present his lecture on water on Friday, April 9th at CSUN. For further information on the lecture, call 818-677-3566.

ROSE GARDEN FESTIVAL

Chairperson Bea Berman will work with Linda Van der Valk (the tea), Zena Thorpe (youth volunteers), Candy and Dean Craig (the garden) on plans for the spring festival on April 25th. Other volunteers and draftees are welcome.

GARDEN REPORT

Dean presented \$8.00 to the Society for sale of persimmons. Dean and Candy are working hard to get the new garden with native plants planted – and finding watering most difficult as the city water is again cut off because of plumbing problems, and delays in tree trimming, and repairs.

Dan Huffinan donated 18 railroad ties to help with landscaping.

NOMINATING COMMITTEE

Virginia Watson, Keith Watts and Bea Berman will be the Nominating Committee. Call any of the committee if you know of persons interested in helping on the Board.

NOTES

Thanks to Bea Berman for donating a microwave for the kitchen.

Virginia and Evelyn handled the Open-House January 3rd. Evelyn did a great job alone with all the tours of the house.

STAGECOACH TRAIL 60 COMMEMORATION

Chatsworth Historical Society will join the SSMPA and the SSMP Foundation in an anniversary celebration of the placement of the plaque on the stagecoach trail by the Native Daughters of the Golden West. Members of this group were born in California, and Minnie Palmer was plaque chairman when they placed the tile plaque by the trail March 19, 1939. Her husband and brother-in-law worked on the plaque. Dorothy Pogue appears in the pictures of the ceremony.

DUES

The Society accepts dues anytime, but they are actually due in June of each year. For the many general members, please send last years dues or last and next, or, if you are paid up, remember June is membership dues time. A single membership is \$15.00 and couples a great bargain at \$20.00.

Chatsworth Historical Society
10385 Shadow Oak Drive
Chatsworth, CA 91311

