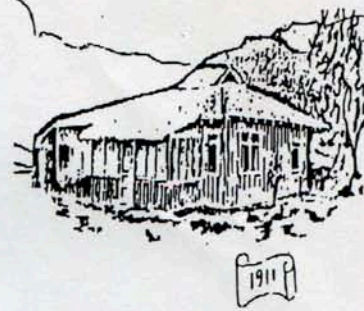


# Smoke Signal



CHATSWORTH HISTORICAL SOCIETY  
10385 Shadow Oak Drive, Chatsworth CA 91311  
(818)-882-5614

President: John Thorpe

Editor: Barbara Pampalone

NOVEMBER, 1998

- **NOVEMBER 17<sup>th</sup> PROGRAM**

The Historical Society welcomes Marie Glasser, a holocaust survivor, to our museum to share her experiences. Mrs. Glasser works with the Museum of Tolerance in Los Angeles that is documenting intolerance in world history – and seeking to educate our world so that the past mistakes will not be repeated.

Join us at 7:00 for an informative evening.

- **DOCENT TRAINING**

Lila Schepler and Virginia Watson will conduct another docent training program. Plan to join them for some extremely interesting Saturday mornings at the Acre. Sessions begin at 9:30 on January 9, 16, 23, 30, and Feb 6. Call (818) 341-3053 so they can have an idea of the number of participants to prepare for.

This project of the Society is one of the most important functions we perform for the community, and the group of docents needs more volunteers. Seriously consider learning more about your community and sharing that information with the many visitors to the Acre. The house and museum are open the first Sunday of each month as well as for special tours.

- **ANTIQUÉ DONATION**

Chris van Schack, owner of Tar Weed Nursery in Lake Manor, has donated some antique items to the Historical Society. Thank you, Chris!!

- **HOLIDAY PARADE**

The Kiwanis Club of Chatsworth is again working on the Holiday Parade. And, again, the Chatsworth Historical Society is preparing a float for the December 13<sup>th</sup> event depicting our garden.

- **CELEBRATE PIONEER DAY**

Lillian reports Pioneer Day raised about \$2,000 for the Historical Society. Thanks to everyone for their hard work!!!

- **DECORATE THE COTTAGE**

Betty Summers is planning decorations for the cottage. Join her on November 28<sup>th</sup> at 10:00 to decorate so the cottage will be ready for our December visitors.

- **NOVEMBER IN THE GARDEN**

If you have visited the Acre this fall you may have noticed a few changes. The old California black walnut tree with a trunk nearly three feet in diameter on the West Side of the garden has been removed

removed because it was dead. For some years now it has been in very poor condition, not healthy and beautiful like the huge hybrid walnut on the East Side of the acre.

Nearly all the roses are in full fall bloom now and new iris, freesias and cool season annuals have been planted as well as quite a few spring and summer blooming perennials such as hollyhocks and lavenders have been added.

Plans for the new garden where the old trailer once stood include a long raised stone planter bed as a memorial to Sheila Watts. Memorial contributions will make possible its construction and installation of a sprinkler system. Other plans for the area include a large level center space of decomposed granite

the Park Department has agreed to construct. We hope to add three permanently fixed benches under the trees opposite the planter bed and to plant the area next to the ditch with low water use native California plants. Although these plans will take some months to accomplish we hope to begin grading the area very soon and then begin construction of the raised planter bed.

#### • **FUTURE PROGRAM PLANS**

In January Joel Amromin will present a program on the trains of Chatsworth. Mr. Amromin, a resident of Rockpoint, works with the Santa Susana Railroad Historical Society and had done research on the Chatsworth Depot and Chatsworth Railroading.