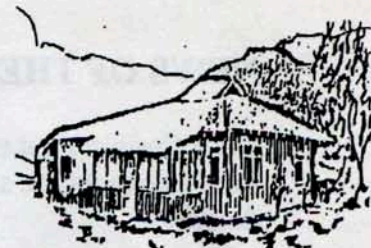


Smoke Signal



CHATSWORTH HISTORICAL SOCIETY
10385 Shadow Oak Drive, Chatsworth CA 91311
(818)-882-5614

President: John Thorpe

Editor: Barbara Pampalone

SEPTEMBER, 1998

SEPTEMBER 15 MEETING

Betty and Jim Summers will present a slide show of pictures taken when the Chatsworth train tunnel was under construction. Buzz Bryant, grandson of Emma Graves, gave the society copies of photographs he found in a trunk that he received when his mother, Queenie Billings, passed away. Buzz, who now lives in Wyoming, is visiting the Summers in early September. FotoSpeed, on the corner of Owensmouth and Devonshire, donated time and materials to duplicate the pictures and prepare the slides. Mark your calendar for 7:00 at the Acre on Tuesday evening.

On November 17th we will welcome Marie Glasser, a Holocaust survivor for our program meeting.

SBA Loan down to \$56.00

Lillian Schepler, Treasurer, reports the loan for earthquake repair on the cottage is almost paid off!! There will be no payments after October.

TIME FOR MEMBERSHIP RENEWAL

Please cut the bottom of this page and send it to Treasurer, Lillian Schepler, CHS, 10385 Shadow Oak Drive, Chatsworth, CA 91311. Pink highlighter on the address label on the reverse marks the date membership dues were last paid.

PIONEER DAY – October 4th

Plans are well underway for a big celebration. Sheriff Rick Nelson has corralled friends, John Wayne (Ermal), Clark Gable (Ralph Chelli) and Glenn Ford (John Ferguson) to make this Pioneer Day even more special.

Still needed are more items for the White Elephant table and the bake sale. Contact Lillian Schepler about donations. We also need more workers for those important fund-raising parts of our festival.

Enclosed is a flyer and do urge your friends and members of other community groups to come.

Sesquicentennial Quilt will come to Chatsworth in March 2000.

The 10 square foot quilt is now at the State fair reports Zena Thorpe who chaired the quilt committee. She recently attended a dinner given by Pac Bell for the 230 people who worked on the quilt.

- ____ Enclosed are my yearly dues (\$15.00).
____ Our couple yearly dues are enclosed (\$20.00).
____ I wish to become a Life Member. (\$125.00)

NEWS OF THE ACRE

Dean Craig set out to catch the three wild dogs. First he caught the skunk! Check with him on details!

The new motion detector lighting system that the Historical Society purchased is being installed by the Department of Recreation and Parks.

DOCENT DOINGS

The docents continue the first Sunday tours. As more docents are needed, Lila Schepler and Virginia Watson are planning docent-training seminars this fall. These seminars are extremely informative; try to find time to join this important part of our society.

WELCOME NEW MEMBERS

Welcome to new life member Phyllis Owens of Chatsworth. Also welcome to Mr. Reid Bogart of Los Angeles. And, the board voted to extend Honorary membership to Cliff of Fotospeed who has provided us with the pictures and slides for our September meeting, and to Kim Rupert who assists with the gardening.

MEMORIAL SERVICE

The Roy Rogers memorial service was held on August 1st and was a great success.

110th Birthday of Methodist Church

On Sunday, September 20th the Methodist Church celebrates its birthday at 1:00 p.m.
