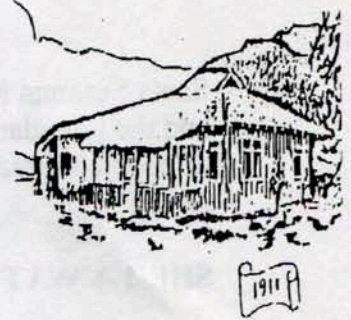


# Smoke Signal



CHATSWORTH HISTORICAL SOCIETY  
10385 Shadow Oak Drive, Chatsworth CA 91311  
(818)-882-5614

President: John Thorpe  
JUNE, 1998

## IT'S A PARTY – FOR DONNA AFFLERBACH

July 12<sup>th</sup> from 4 to 6 we will meet at the acre to see Donna before she departs from this area. Donna has served as the Director of Docents the last few years, and has worked hard for the Historical Society, as well as the Coordinating Council and Friends of the Library. We will miss her work and bright smile.

We plan a potluck, with the Society is providing hamburgers, hot dogs, drinks and a cake. We are asking families with last names beginning A-M to bring salads, and the rest can be creative in what they add to the feast.

## SEPTEMBER 17<sup>TH</sup> PROGRAM MEETING – THE HOLOCAUST

Our meeting will be held at 7:00 at the acre with guest speaker Marie Glassier who works at the Museum of Tolerance and speaks to us as one of the survivors of the holocaust. Mark your calendars for this will be a very special program.

## WINDOWS INTO THE PAST

Bill Schepler is preparing the wonderful stories about early Chatsworth he has given us at different times in our newsletter into a book so they will be preserved.

## INSTALLATION OF OFFICERS

At the May meeting the following officers were installed by Catherine Mulholland; Each received a copy of the new book, *The Owensmouth Baby*. So you can contact them for any special problems, some phone numbers are included

Pres. John Thorpe – 882-9954

Program Veep - Joseph Pampalone –  
882-2395 / 709-1200

Membership Veep - Keith Watts –  
341-4489

Hospitality Veep - Ruth Grant

Secretary - Zena Thorpe

Curator - Virginia Watson

Smoke Signal – Barbara Pampalone

Photographic Material – Bill Schepler

Director-at-Large (Coordinating Council  
Representative) - Bea Berman

Director at Large (Ass't Curator) – Betty  
Summers

Directors –at-Large (General) - Linda and  
Andre Van der Valk

Director-at-Large (Museum Council) – Lila  
Schepler

Directors of the Garden - Dean and Candy  
Craig

Honorary Board Member – Eileen Janess

## DEDICATION OF SANTA SUSANNA STATE HISTORIC PARK

Virginia Watson reported the  
Historical Society participated with the

Santa Susanna Mountain Park Association and the Foundation in the dedication. Lots of people toured the house and enjoyed our Acre.

### SHEILA WATTS MEMORIAL

Keith and his family reviewed plans that Candy and Dean Craig had prepared for an adobe-like sandstone garden planter. It would be placed along the fence where the trailer once stood. It will shelter the acre from the traffic and give a floral border to an area where outside meetings could be held.

### PIONEER DAY PLANS

Pioneer Day will be October 4<sup>th</sup> from 11:00 to 4:00. A committee was formed. Virginia Watson will get animals, Ruth Grant will prepare for kids quilting, Bea Berman has plans for the Chili Cook-off, Lillian Schepler will handle the bake sale.

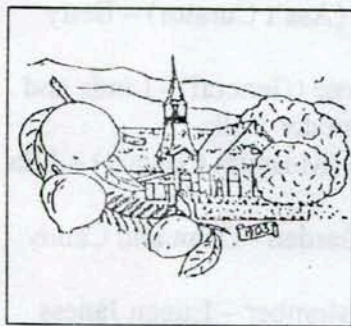
The whole board was asked to meet on June 18<sup>th</sup> where more responsibilities were volunteered for or assigned by John. Anyone willing to help in any capacity, please come to help plan.

### ERATTA

There are a couple of corrections to the information in the last Smoke Signal. Ramon Avila built and installed the handrail at the ramp leading to the museum. Gordon Knause, Department of Recreation and Parks, who lived in the trailer until its removal, built the cement ramp. Thank you so much to BOTH Ramon and Gordon. What a nice entrance to the museum you made.

AND Minnie's grandchildren visited the cottage built by their Great Great Uncle Lovell Hill. Lovell didn't marry until he was nearly 60 years old and had no descendants. He was Minnie's older brother.

Chatsworth Historical Society  
10385 Shadow Oak Drive  
Chatsworth, CA 91311



Chatsworth Historical Society  
10385 Shadow Oak Dr.  
Chatsworth  
CA, 91311