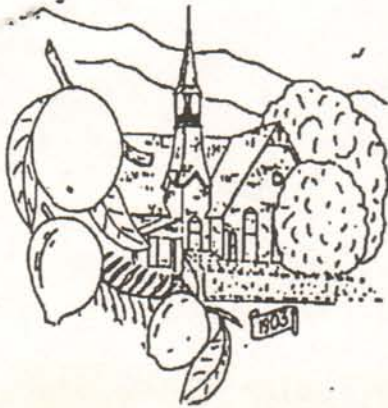


Nov 92



Smoke Signal



CHATSWORTH HISTORICAL SOCIETY
10385 Shadow Oak Drive, Chatsworth CA 91311
(818)-882-5614

VOLUME 30, NO. 4

President: Zena Thorpe
Editor: Sheila Watts

NOVEMBER, 1992

PROGRAM MEETING NOTICE

TUESDAY, 17 NOVEMBER
7:30 p.m.
CHATSWORTH MUSEUM

The speaker for the November meeting will be Edwin Iverson, grandson of Karl and Augusta Iverson, Chatsworth pioneers.

Mr. Iverson will share his memories along with photos and slides of the family as well as films from the time the ranch was used for movie making. One amusing short film will include famous sites from movie and television films.

Do join us for this interesting event and please bring a friend.

We'll enjoy pie and coffee after the program.

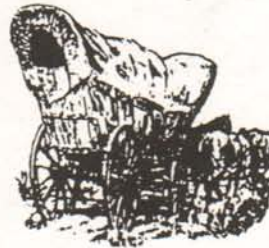
From Donna Afflerbach, program vice president.

There was a fine turn-out for the September Membership Roundup potluck barbecue. With Dorothy Sammartano and her crew cooking up those tasty burgers and with all the salads and desserts brought by the members a pretty fine meal was had by all.

The highlights of the afternoon were musical! First by Bill Razanski's harmonica and then the barbershop harmony sung by the En/CORE chorus. We'll be sure to announce the SFV Valleyaires annual concert so that you may enjoy their music again.

PIONEER DAY PROGRAM

Congratulations to Bea Berman and her hard working helpers for a most enjoyable and successful Pioneer Day '92! There was a great deal of interest in our numerous booths and exhibits. We've had two outstanding Pioneer Days now and we're already planning the 1993 event.

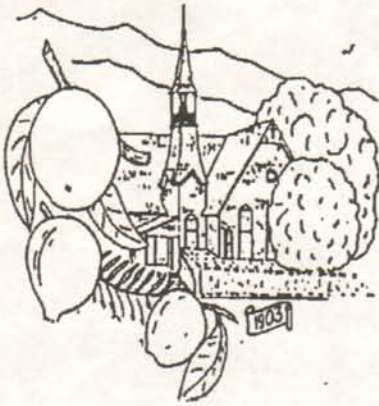


So long, pardner! We'll see ya' next year!

A second November Smoke Signal will be mailed soon. The deadline for news items will be November 18. The editor encourages your participation.

A Happy Thanksgiving to all!





Smoke Signal



CHATSWORTH HISTORICAL SOCIETY

10385 Shadow Oak Drive, Chatsworth CA 91311

(818)-882-5614

VOLUME 30, NO. 4 - A

President: Zena Thorpe

NOVEMBER, 1992

Editor: Sheila Watts

HOLIDAY OPEN HOUSE

You are cordially invited to attend a holiday open house on Sunday, December 6 from 1 p.m. to 4 p.m., at the Homestead Acre.

Tours of the house and museum will be provided by the docents and refreshments will be served. The cottage will be suitably decorated for the holiday season.

A wicker doll carriage circa 1910 is the Society's newest acquisition and it will be on display in the children's bedroom.

The carriage was purchased with funds that were donated to honor past president Jane Matthews on the occasion of her 75th birthday party last spring. We thank Jane for generously suggesting the donations and also the many people who chose to assist the Society and made contributions.

POPULAR PROGRAM

Edwin Iverson, speaker at the November meeting, proved to be both informative and popular as a speaker since he had grown up on the Iverson Movie Ranch and attended Chatsworth Park Elementary School.

In addition to recounting many interesting anecdotes regarding movie making in the Santa Susana Mountains, Iverson showed a one-reeler starring Abbott & Costello that was really funny and later presented a very fine collection of slides made in and around Chatsworth. These

included great coverage of a July 4th parade circa the late 1940's and excellent views of snow bound Chatsworth of 1949!

Many thanks to Mr. Iverson for sharing these memories with the numerous members and friends who attended the meeting - and also enjoyed the refreshments presented by Dorothy Sammartano and the hospitality committee.

From the President:

I want to remind you that we have a program meeting every other month. We have some very informative, entertaining and lively meetings. November's program was a great presentation by a grandson of Karl and Augusta Iverson, who told us about Joe Iverson and the many movies that were made at the Iverson Ranch.

Our next program meeting will be held on January 19th.....keep the date.

Please come and visit us at "Open House" at the acre this Sunday when the house will be traditionally decorated and we'll be serving goodies in true pioneer style.

Zena

CHURCH BELL PRESERVED.

CONGRATULATIONS - to the Northridge United Methodist Church on having installed a new bell tower in honor of Edith Washburn Sawyer. The bell was originally installed in a Northridge elementary school in the early 1900's. Later,

when the new elementary school was built at the corner of Reseda and Nordhoff in 1926, the old building became the Methodist Episcopal Church and was moved to a location diagonally across the street from the new school. The bell rang out loud and clear on Sunday mornings.

The acreage on the east side of Reseda Boulevard was a Washburn family enclave - the grandparents lived there from 1920; Lorey and Dorothy had a home there as did Steve and Henrietta Washburn, also the Sawyers and an aunt of theirs. Margaret Washburn Johnson owned property there and it is thought that each family member held 10 acres of land.

The Steve Washburns and Margaret Johnson are long time members of the Historical Society and they and the Lorey Washburns reside in Chatsworth.

Edith Sawyer recently lost her beloved daughter, Margaret (Peggy) Throssell, after a lengthy bout with cancer. While the new church was being built Peggy had arranged with the Reverend David Richardson to have the bell installed in the small tower adjacent to the new church sanctuary. It honors her mother, Edith, a long time Northridge resident and member of the Northridge United Methodist Church.

NEWSLETTER NEWS -

SEARCH FOR BACK ISSUES.

Since its inception in 1963 the Society has been publishing about 10 newsletters each year. The Society is now binding these publications as part of the archives and we are missing many issues. For protection we are hoping to obtain 2 copies of each that are missing. If you find you have any of these copies please loan them for reproduction::

1966: Jan, Mar, May/June, Oct, Nov, Dec.

1967: May/June, Sept, Oct, Dec.

1968: Jan, Feb, Mar, May/June, Oct.

1969: Jan, Apr, May,/Jun, Oct, Nov.

1970: Feb, Apr, May/Jun, Sept, Dec.

1971: Mar, Jun, Sept, Oct, Nov, Dec.

1972: May/June

1973: Sept.

1976: April.

1977: Oct.

1984: Sept.

1988: Feb, Mar, May/June, Oct, Nov.

1989: Feb, Mar, Apr, May,June, Sept,Oct, Nov.

1990: Jan, Mar, Apr, May,/June, Sept,Oct, Nov, Dec.

1991: January through October.

Donna Afflerbach, Project chair

882-0485

AFRICAN ART COLLECTION to California State University, San Bernardino.

Jane Matthews, past president of the Chatsworth Historical Society and a renowned collector of African Art, has donated her collection to California State University San Bernardino.

The collection was accepted on behalf of the University by President Anthony H. Evans at a reception on Sunday, October 18.

The event opened a showing of the art that will continue through December 17. Ms. Matthews talked about the collection and of her visits to Africa.

The University Art Gallery is located at 5500 University Parkway, San Bernardino; gallery hours are Monday-Friday 9 a.m. to 4 p.m; Saturday-Sunday, Noon to 4 p.m.

REMINDER!

The California Conference of Historical Societies will hold its spring symposium from February 19 to 21, 1993, in the San Fernando Valley hosted by the Canoga Park/Owensmouth Historical Society. Titled, "Ranchos to Rockets," the symposium will be based at the Airtel Plaza Hotel in Van Nuys and numerous historical sites will be toured including the Homestead Acre, the Merle Norman collection at San Sylmar and San Fernando Mission. The program also includes workshops, luncheons and a banquet.

A program including reservation information will be included with the December issue of the Smoke Signal.

MEMBERSHIP NEWS:

Welcome to new member: Ruth Albrecht

Thanks to the following for renewing:

Betty Butler

Clifford & Hazel Miller

Catherine Mulholland. Nanci Oiva-Bond

ATTENTION LIFE MEMBERS:

Lifetime membership in the Chatsworth Historical Society is a desirable asset, to both the Member and the Society. However, the passage of time and rising costs of sponsoring our activities and programs ask for further dedication from Life Members. The Board of Directors therefore request a voluntary donation of \$5.00 from each Life Member. This will go to assist in defraying the costs of reproduction and mailing the Smoke Signal and other communications.

Keith Watts,

Membership Vice President

"Pageantry" by Zena Thorpe

This unique quilt was winner of the Rose & Hubble Cup at the 9th annual National Patchwork Championships at Althorp, Northamptonshire, England, June, 1993 and also won three U.S. awards.



Dec. 92

MEMBERSHIP NEWS

Please welcome new Member:

Bette Ann Williams
21615 Tribune Street
Chatsworth, CA 91311

The Society appreciates the \$5.00 donations of many Life Members that we requested to help defray costs of publishing and mailing Smoke Signals, program flyers, etc. Thanks for your support!

Memorials:

Violet Bell Wilson, mother of Virginia Watson and a long-time member and supporter of the Chatsworth Historical Society, passed away on November 18, 1992, just one day past her 92nd birthday. She was living at the Chatsworth Park Convalescent Hospital on Owensmouth Avenue.

Memorial services were held in the Pioneer Church and interment was near the entrance of the little community church which we all worked so hard to save and restore.

Memorial donations made in her name will go toward renovating the curator's office at the Homestead Acre.

###

Henry M. (Hank) Watson, one of the original supporters of the idea of a Chatsworth Historical Society and the husband of Virginia Watson, passed

away on December 6, 1992, after a week at Kaiser Hospital. He suffered a stroke following cataract surgery and died of pneumonia. He was 76 years old.

A pioneer in the computer field, Mr. Watson opened the data processing department at Rocketdyne and was one of the first people to receive a Data Processing Certificate at New York University in 1962.

A resident of Chatsworth for 40 years, Mr. Watson loved Thoroughbred horses and held a valid California Horse Racing Trainer's License. For more than a decade the Watson's owned Equine Emporium and were the originators of the gift shops at the California race tracks. An avid golfer, Mr. Watson was a member of the P.G.A. and enjoyed all golfing activities.

Memorial gifts made in his name are also being used to refurbish the curator's office at the Homestead Acre.

###

Ella Woodhead, mother of Sheila Watts, died peacefully in her sleep on December 31st, 1992. She was 89 years of age.

Ella was a frequent visitor to Chatsworth during the years that her four grandchildren were growing up - she usually spent 3 months here and three months in Virginia visiting her other daughter, Joy Broyles, her husband and family of three children.

Donations to the Society in her memory will be used to support Society projects.

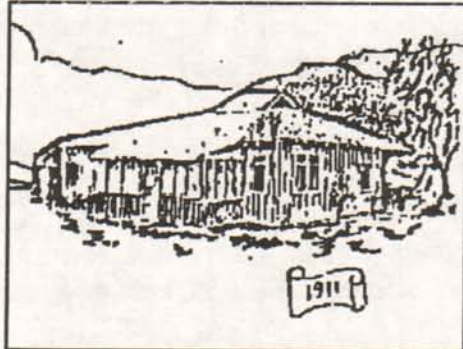
###

Donations totalling \$155 have already been received in memory of the above people from:

Virginia Watson
Ralph & Marian Hyland
Jim & Betty Summers
Lillian Schepler
Donna Afflerbach
Bea Berman
Sheila Watts

Museum News:

Bea & Marshall Berman purchased carpet for the new curator's office in the museum and Keith Watts installed it. Many thanks for all the help!



Thanks to Candy Craig for sending in the following poem. It first appeared in the newsletter of the Monrovia Historical Society and was reproduced in the Huntington Museum's volunteer newsletter, "The Tattler."

Heavenly Reward

Many will be shocked to find,
When the day of judgment nears
There's a special place in Heaven
Set aside for volunteers:
Furnished with big recliners,
Satin couches and footstools,
But no committee chairman,
No group leader, no car pools.

No eager team that needs a coach
No bazaar and no bake sale.
There will be nothing to staple,
Not one thing to fold or mail.
Telephone lists will be outlawed,
But a finger snap will bring
Cool drinks, gourmet dinners
And rare treats fit for a king.

Who'll serve those privileged few
And work for all they're worth
Why, all who reaped the benefits
And did not volunteer on earth.